

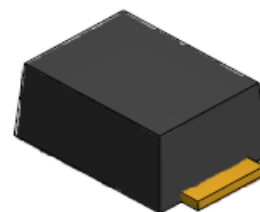


TSS Product Specification

BSxxxxN-C-F Thyristor Surge Suppressor

1、FEATURES

- Excellent capability of absorbing transient surge
- Quick response to surge voltage
- Eliminates overvoltage caused by fast rising transients
- Moisture sensitivity level: Level 1
- Weight 104 milligrams(approximate)
- Non degenerative



SMB-F

2、PART NUMBER AND ELECTRICAL PARAMETER @ T=25°C RH = 45%-75%

Part Number	V _{DRM}	I _{DRM}	V _s	I _s	V _T	I _T	I _H	C _o
	V	μA	V	mA	V	A	mA	pF
		MAX	MAX		MAX		MIN	MAX
BS0060N-C-F	6	5	25	800	4	2.2	15	100
BS0300N-C-F	25	5	40	800	4	2.2	50	100
BS0640N-C-F	58	5	77	800	4	2.2	150	100
BS0800N-C-F	75	5	98	800	4	2.2	150	100
BS1800N-C-F	160	5	220	800	4	2.2	150	100
BS2300N-C-F	190	5	260	800	4	2.2	150	80
BS2600N-C-F	220	5	300	800	4	2.2	150	80
BS3100N-C-F	275	5	350	800	4	2.2	150	80
BS3500N-C-F	320	5	400	800	4	2.2	150	35
BS4200N-C-F	390	5	500	800	4	2.2	150	35

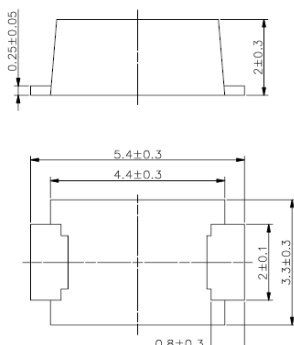
- ①、V_s is measured at 100KV/S
- ②、Off-state capacitance is measured in V_{DC}=2V, V_{RMS}=1V, F=1MHz
- ③、All measurements are made at an ambient temperature of 25°C

3、PART NUMBERING SYSTEM

BS **xxxx** **N** **C** **F**
 (1) (2) (3) (4) (5)

- (1) LangTuo Semiconductor Surge Arrester
- (2) Series: 0060, 0300, 0640, 0800, 1800, 2300, 2600, 3100, 3500, 4200 etc.
- (3) Package : SMB
- (4) Rating Surge Voltage: 6KV(10/700μS)
- (5) Flat Feet

4、DIMENSIONS AND MARKING



MARKING:

B35NC
0909

Part Number
Production Date
0909 means 9th month, 2009

TSS Product Specification

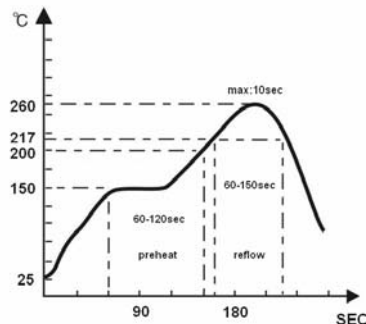
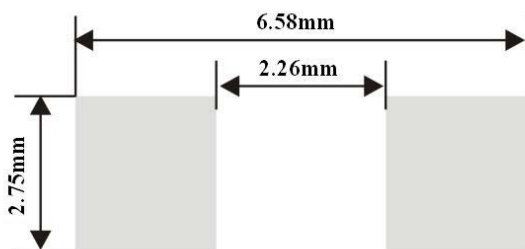
BSxxxxN-C-F Thyristor Surge Suppressor



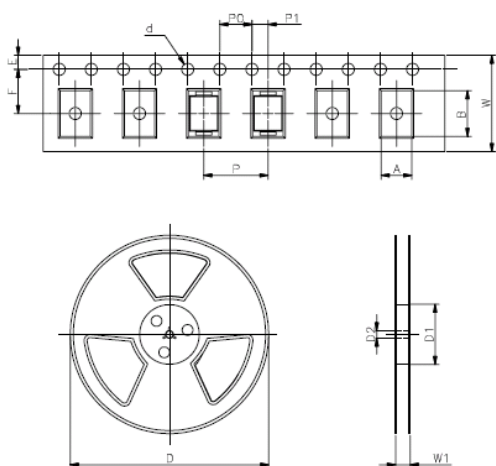
5、 THERMAL CONSIDERATIONS

Symbol	Parameter	Value	Unit
T _J	Operating Junction Temperature Range	-40 to +150	°C
T _s	Storage Temperature Range	-60 to +150	°C

6、 RECOMMENDED SOLDERING PAD AND REFLOW PROFILE



7、 PACKAGE REEL INFORMATION



SMB-F

REF.	mm(inch)
A	3.65+/-0.1(.144+/-0.004)
B	5.69+/-0.1(.244+/-0.004)
d	1.5+/-0.1(.059+/-0.004)
D	330.0(13.0)
D1	50Min
D2	13+/-0.15(.512+/-0.020)
E	1.5+/-0.1(.059+/-0.004)
F	5.65+/-0.05(.222+/-0.002)
P	8.0+/-0.1(.315+/-0.004)
P0	4.0+/-0.1(.157+/-0.004)
P1	2.0+/-0.1(.079+/-0.004)
W	12.0+/-0.2(.472+/-0.008)
W1	16.8+/-2.0(.661+/-0.079)

OUTLINE	REEL (PCS)	PER CARTON (PCS)	REEL DIAMETERS (mm)	CARTON SIZE(mm)		
				L	W	H
TAPING	3,000	24,000	330	360	360	360

Remark:

Special Notes