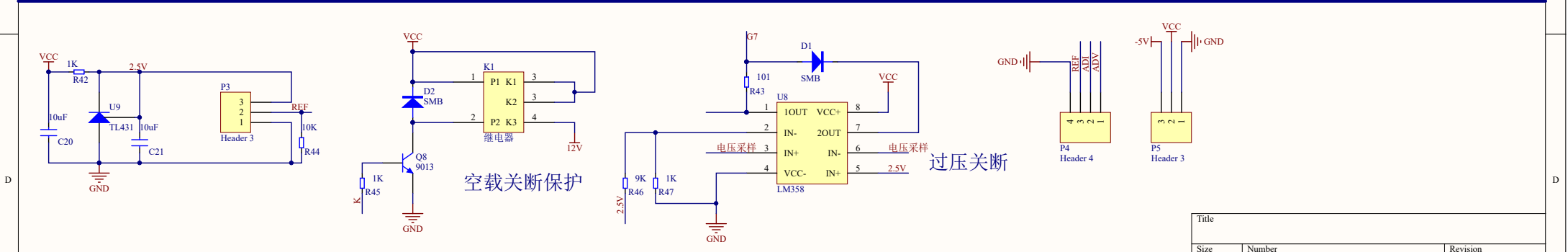


U2与U7参数相同
 U3-U6参数相同
 栅极电阻为20欧，采样电阻为50毫欧



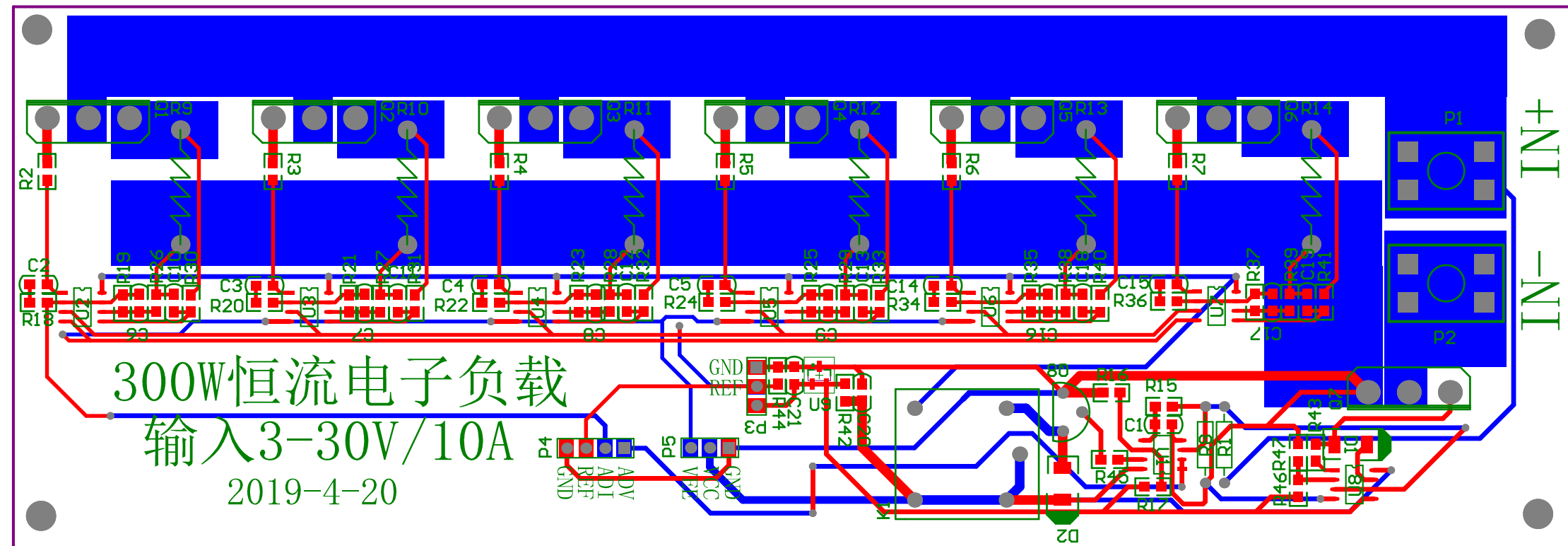
反接保护和低电压输入关断

Title		
Size	Number	Revision
A3		
Date:	2019/5/8	Sheet of
File:	FA毕业设计\300W负载重制版.SchDoc	Drawn By:

300W恒流电子负载

输入3-30V/10A

2019-4-20



Comment	Description	Designator	Footprint	LibRef	Quantity
10uF		C1, C10, C11, C20, C21	0805C	C0805	5
47nF		C2, C3	0805C	C0805	2
C0805		C4, C5, C8, C9, C12, C13, C14, C15, C16, C17, C18, C19	0805C	C0805	12
474		C6, C7	0805C	C0805	2
SMB		D1, D2	SMB N	SMB	2
继电器		K1	继电器	继电器	1
PCB端子		P1, P2	PCB端子	PCB端子	2
Header 3	Header, 3-Pin	P3, P5	HDR1X3	Header 3	2
Header 4	Header, 4-Pin	P4	HDR1X4	Header 4	1
20N60		Q1, Q2, Q3, Q4, Q5, Q6, Q7	TO-247-A	20N60	7
9013		Q8	TO-92	9013	1
Res2	Resistor	R1, R8	AXIAL-0.4	Res2	2
20		R2	R0805	R0805	1
R0805		R3, R4, R5, R6, R7, R22, R23, R24, R25, R28, R29, R32, R33, R34, R35, R36, R37, R38, R39, R40, R41	R0805	R0805	21
采样电阻		R9, R10, R11, R12, R13, R14	50mR采样电阻	采样电阻	6
10K		R15, R44	R0805	R0805	2
1K		R16, R26, R27, R30, R31, R42, R45, R47	R0805	R0805	8
9K		R17, R46	R0805	R0805	2
22K		R18, R20	R0805	R0805	2
49K		R19	R0805	R0805	1
24K		R21	R0805	R0805	1
101		R43	R0805	R0805	1
LM358		U1, U2, U3, U4, U5, U6, U7, U8	SOP8	LM358	8
TL431		U9	SOT-23-A	TL431	1