

GDT Product Specification

BA***N SMD Gas Discharge Tube (4.5×3.2×2.7mm)



1、FEATURES

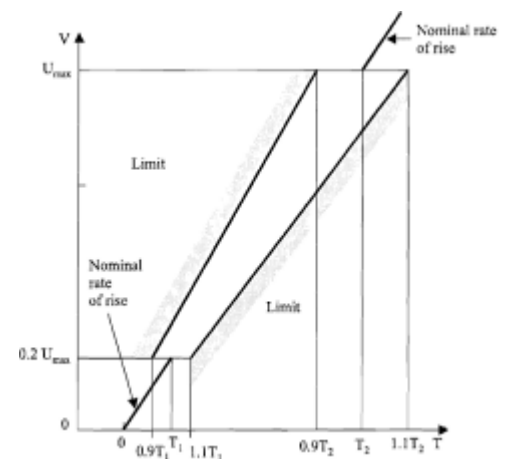
- Surface Mounting Design UL Certificated E232249
- Small Size Design EIA 1812 4.5×3.2×2.7mm
- High Current Handling Capability 1,000A @ 8/20μs
- Low Capacitance and Insertion Loss
- Fast Response and Long Service Life
- Reliable to Protect Electrostatic Surge
- Moisture sensitivity level: Level 1



2、AVAILABLE PART NUMBER AND ELECTRICAL PARAMETER @ T=25°C RH = 45%-75%

| Part Number | DC Breakdown Voltage① | Tolerance of Vs | Impulse Spark-over Voltage | Impulse Discharge Current② | Insulation Resistance | | C③ (1MHz) |
|-------------|-----------------------|-----------------|----------------------------|----------------------------|-----------------------|------|--------------------|
| | 100V/s④ | | 1kV/μs④ | 8/20μs | GΩ | DC | 0.3V _{DC} |
| BA091N | 90V | ±30% | ≤ 700V | 2,000A | ≥1 | 50V | ≤1pF |
| BA151N | 150V | ±30% | ≤ 750V | 2,000A | ≥1 | 50V | ≤1pF |
| BA201N | 200V | ±30% | ≤ 750V | 2,000A | ≥1 | 100V | ≤1pF |
| BA231N | 230V | ±30% | ≤ 750V | 2,000A | ≥1 | 100V | ≤1pF |
| BA301N | 300V | ±30% | ≤ 800V | 2,000A | ≥1 | 100V | ≤1pF |
| BA351N | 350V | ±30% | ≤ 900V | 2,000A | ≥1 | 100V | ≤1pF |
| BA401N | 400V | ±30% | ≤ 950V | 2,000A | ≥1 | 100V | ≤1pF |
| BA401N+ | 400V | 340-550 | ≤ 950V | 2,000A | ≥1 | 100V | ≤1pF |
| BA471N | 470V | ±30% | ≤1000V | 2,000A | ≥1 | 100V | ≤1pF |
| BA601N | 600V | ±30% | ≤ 1200V | 2,000A | ≥1 | 100V | ≤1pF |

- ①、The parameters of all are tested by ITU-T K12
- ②、Total Impulse Discharge Current 1,000A @ 8/20μs by IEC 61000-4-5, 10 shots
- ③、The capacitance are tested by 10kHz @ DC= 0.3V
- ④、The V-T waveform of DCBV and IPBV must lie between the shades.

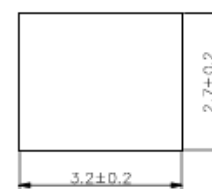
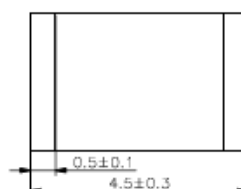
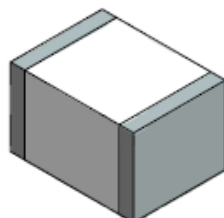


3、PART NUMBERING SYSTEM

BA **XXX** **N**
 (1) (2) (3)

- (1) Langtuo SMD Gas Discharge Tube in 4.5×3.2×2.7 (L×W×H) (mm), Total Impulse Discharge Current 1,000A @8/20μs
- (2) DC Breakdown Voltage, e.g., 151=15×10¹=150V
- (3) Tolerance is DC Breakdown Voltage, M=+-20%, N=+-30%

4、DIMENSIONS

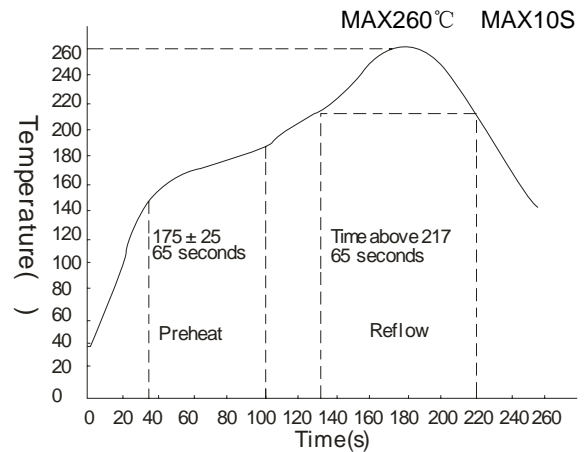
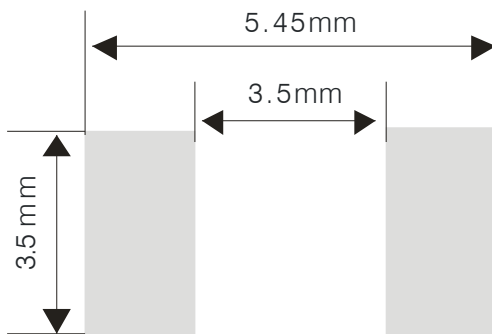


Unit:mm

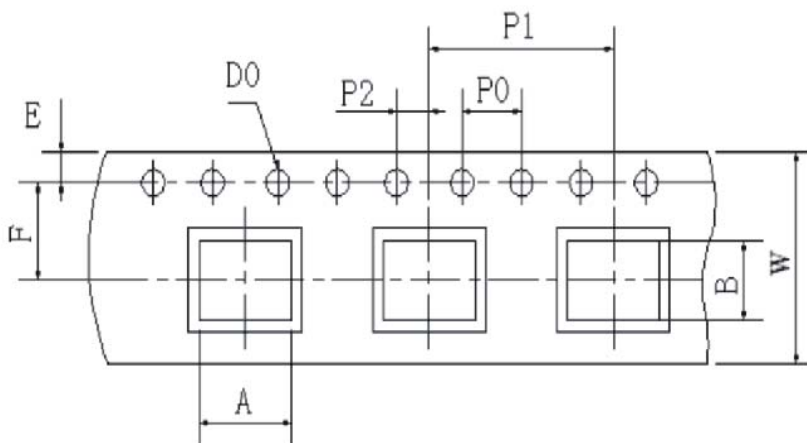
GDT Product Specification

BA*N SMD Gas Discharge Tube (4.5×3.2×2.7mm)**


5、RECOMMENDED SOLDERING PAD AND REFLOW PROFILE


6、OPERATION AND STORAGE TEMPERATURE: -40°C ~ +85°C

7、PACKAGE REEL INFORMATION



| ITEM | DIM(mm) |
|------|-------------|
| A | 3.7 ± 0.20 |
| B | 4.7 ± 0.20 |
| D0 | 1.50 ± 0.10 |
| E | 1.75 ± 0.10 |
| F | 5.5 ± 0.10 |
| P0 | 4.0 ± 0.1 |
| P1 | 8.0 ± 0.10 |
| P2 | 2.0 ± 0.1 |
| W | 12.0 ± 0.30 |

| OUTLINE | UNIT WEIGHT (g) | REEL (PCS) | PER CARTON (PCS) | REEL DIAMETERS (mm) | CARTON SIZE(mm) | | |
|---------|--------------------|---------------|---------------------|------------------------|-----------------|-----|-----|
| | | | | | L | W | H |
| TAPING | ~0.2 | 2,000 | 32,000 | 330 | 360 | 360 | 360 |

Remark:

- 1、 Shenzhen Iantop Electronics Co., Ltd
- 2、 Add items of Operation and Storage Temperature
- 3、 Add items of UNIT WEIGHT

Special Notes**Date Issued:2010/07**