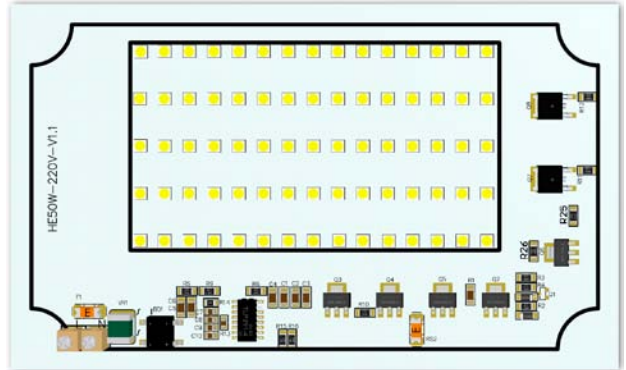
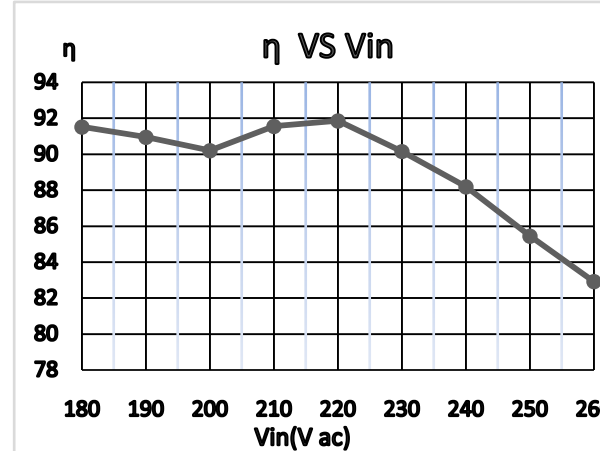


特点:

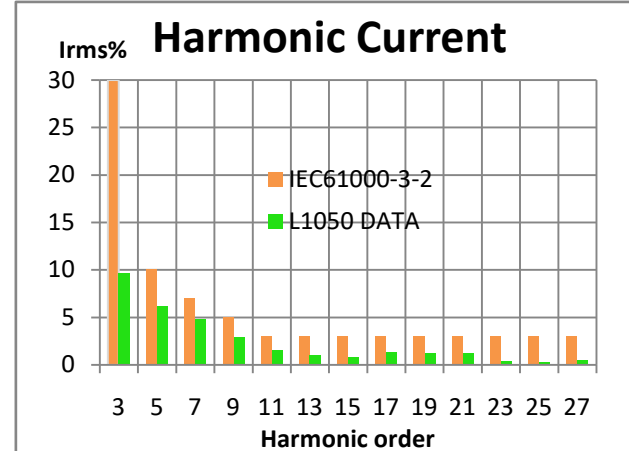
- 转换效率高
 - 功率范围: 25W~100W
-
- ◆ 效率..... ~ 90%
 - ◆ 电压输入范围..... 180~260Vac
 - ◆ 恒功率..... <±5%
 - ◆ THD..... ~ 10%
 - ◆ PF >0.98



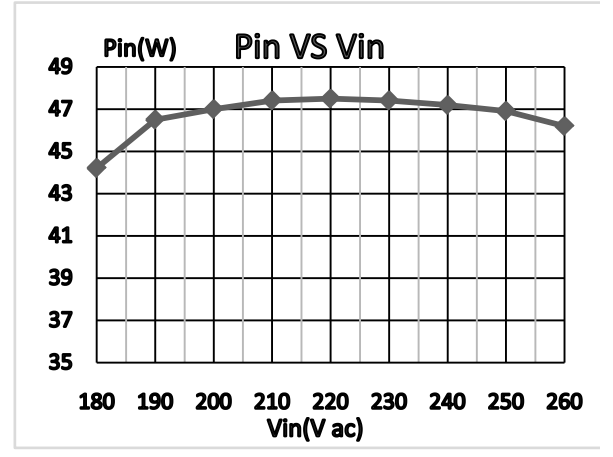
效率 vs 市电



谐波 vs 市电



功率 VS 市电



PF vs 市电

