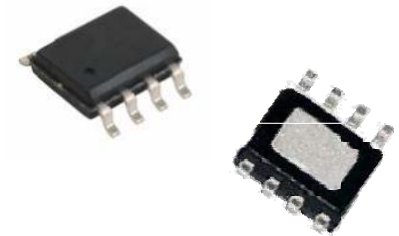
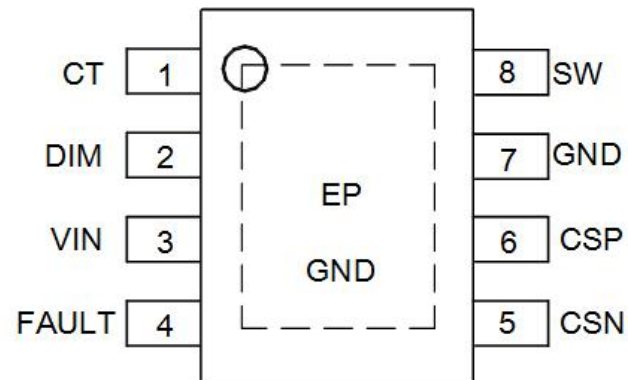
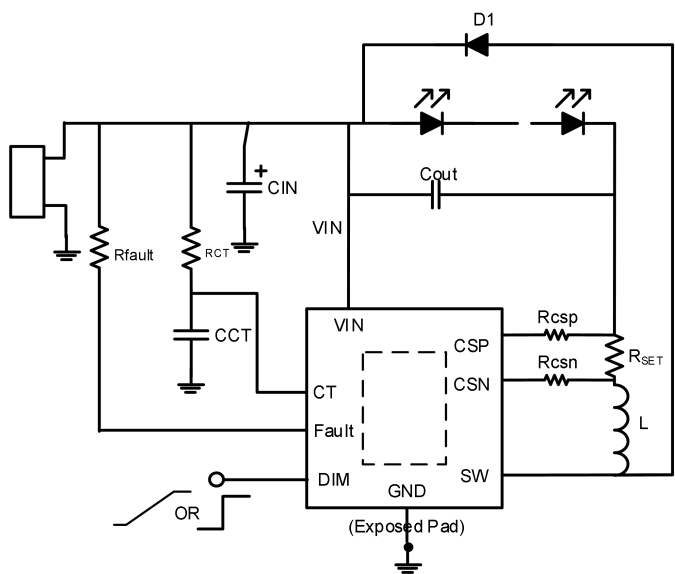


## QW2032产品简介

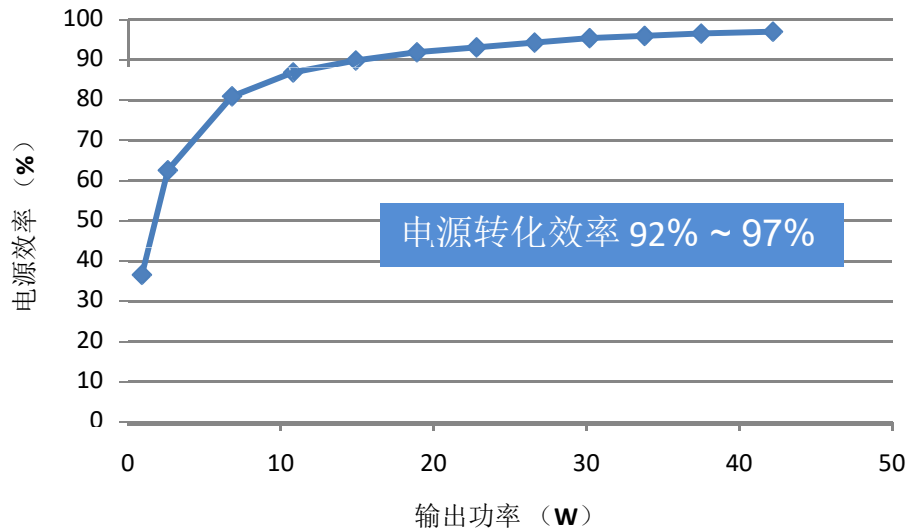
- 高压BUCK恒流驱动芯片，允许宽输入电压范围: 8V to 65V;
- 宽输出电压范围，最低允许只带一颗LED负载，输出电压低至2V;
- 内置高压MOSFET，允许最大1.5A输出电流;
- 高电源转换效率，满载效率高达97%;
- 专利是调光技术，可实现高精度调光，调光深度低至1%;
- 输出共阳连接，可极大程度地简化系统外围电路设计;
- 内置频率抖动技术，可大幅度简单EMI;
- 内置开路、过温、限流保护功能，故障移除后系统自动恢复工作



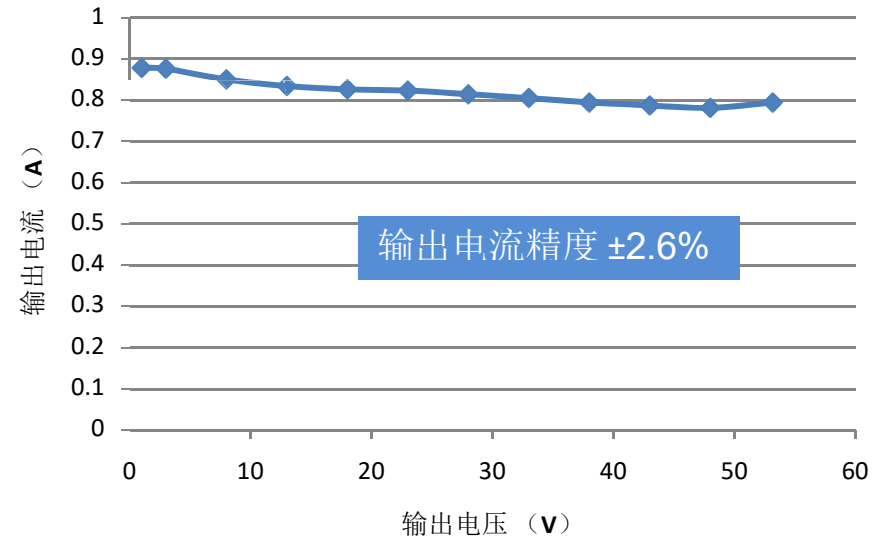
参数描述	符号	Min	Typ	Max	Units	Comment
Input						
Input Voltage	Vin	54		60	Vdc	
Open-load input power						58Vdc In
Output						
Range of output voltage	Vout	25		52	Vdc	
Const Current	Iout	760	800	<b>840</b>	mA	
Output Power	Pout	20		40	W	
Efficiency	$\eta$			97	%	
Turn on Delay Time					Sec	
Conducted EMI	Meet FCC Part 15 Class B					
Over temperature Protection	Tp			120	°C	
Operation Temperature	Ta	-20		50	°C	

# QW2032基本电性能

负载效率曲线



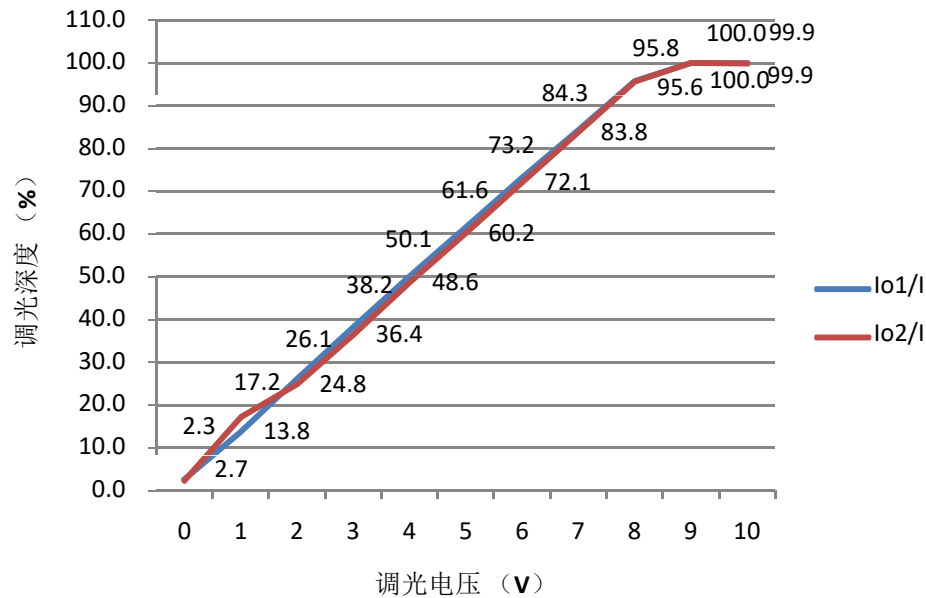
负载调整曲线



U <sub>in</sub> (V)	I <sub>in</sub> (A)	P <sub>in</sub> (W)	LED (颗)	U <sub>out</sub> (V)	I <sub>out</sub> (A)	P <sub>out</sub> (W)	效率 (%)
57.85	0.752	43.52	19	53	0.794	42.2	97.01
57.86	0.671	38.83	16	48	0.781	37.5	96.54
57.86	0.609	35.27	15	43	0.787	33.8	95.95
57.86	0.547	31.63	13	38	0.794	30.2	95.39
57.87	0.486	28.17	11	33	0.805	26.6	94.30
57.87	0.423	24.48	9	28	0.814	22.8	93.10
57.88	0.356	20.6	8	23	0.823	18.9	91.89
27.88	0.285	16.55	6	18	0.826	14.9	89.84
57.88	0.216	12.48	4	13	0.834	10.8	86.88
57.89	0.145	8.4	3	8	0.85	6.8	80.95
57.89	0.072	4.2	1	3	0.876	2.6	62.57

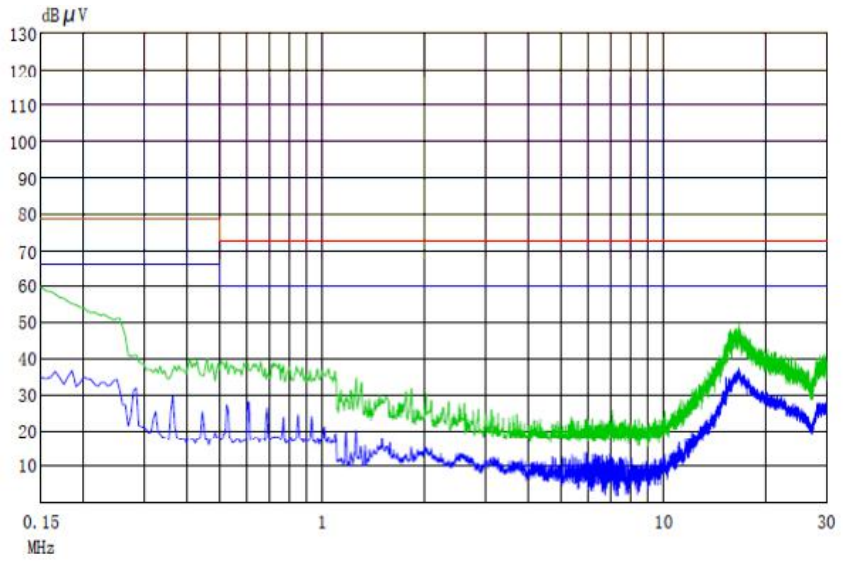
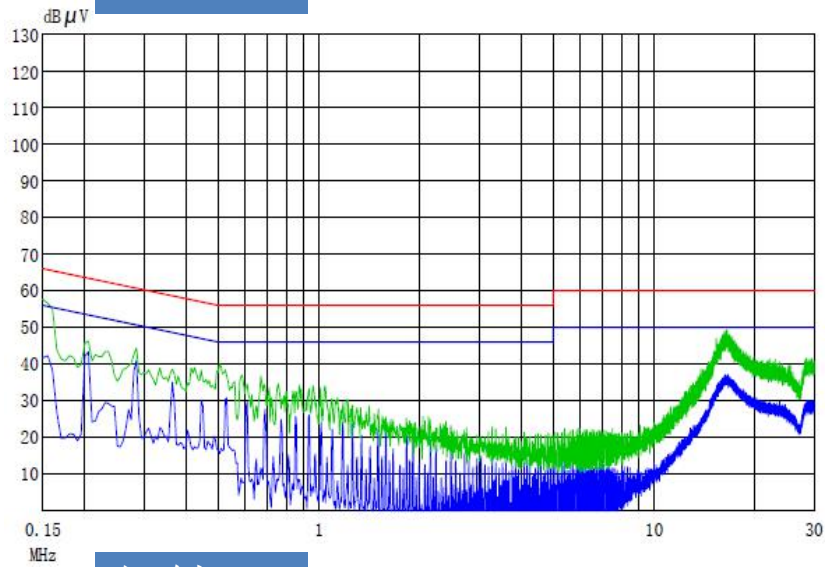
# QW2032调光性能

调光信号 (V)	输入电压 (V)	负载1 (V)	Io1 (mA)	输出比例 %	负载2 (V)	Io2 (mA)	输出比例 %
0	58	35	21.4	2.7	52	18.7	2.3
1			110.3	13.8		136.8	17.2
2			209.3	26.1		198	24.8
3			306.4	38.2		290.3	36.4
4			401.5	50.1		387.5	48.6
5			493.7	61.6		479.8	60.2
6			586.5	73.2		574.4	72.1
7			675.6	84.3		667.8	83.8
8			767.6	95.8		761.9	95.6
9			801.3	100.0		796.8	100.0
10			800.7	99.9		796	99.9



- 精准的调光精度;
- 优异的调光线性度;
- < 1% 的调光深度;

## 传导EMI



## 辐射EMI

