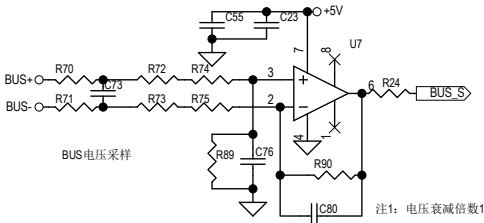
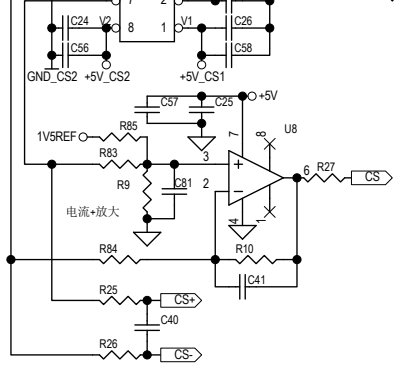
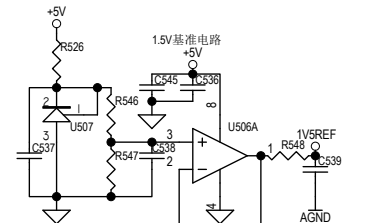
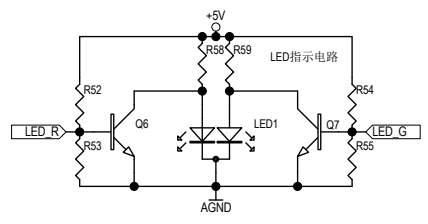
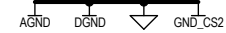
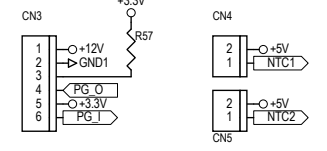
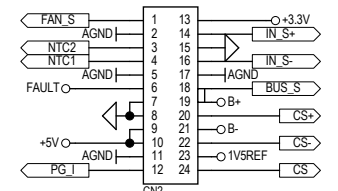
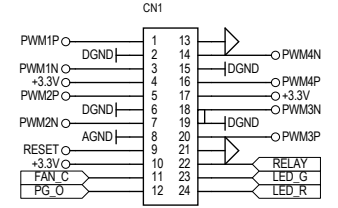


注3: 电压衰减倍数330, 330V/1V, AD=1.5+(IN_S)/2



注1: 电压衰减倍数163.5, 153.5V/1V, AD=BUS_S 注2: 电流放大倍数40, 1A/0.1V, AD=1+(CS)/2



	LED R	LED G
市电断开, 其余为非故障的任意状态	红灯亮	L H
正常工作状态	绿灯亮	H L
故障状态	红绿灯亮	L L