

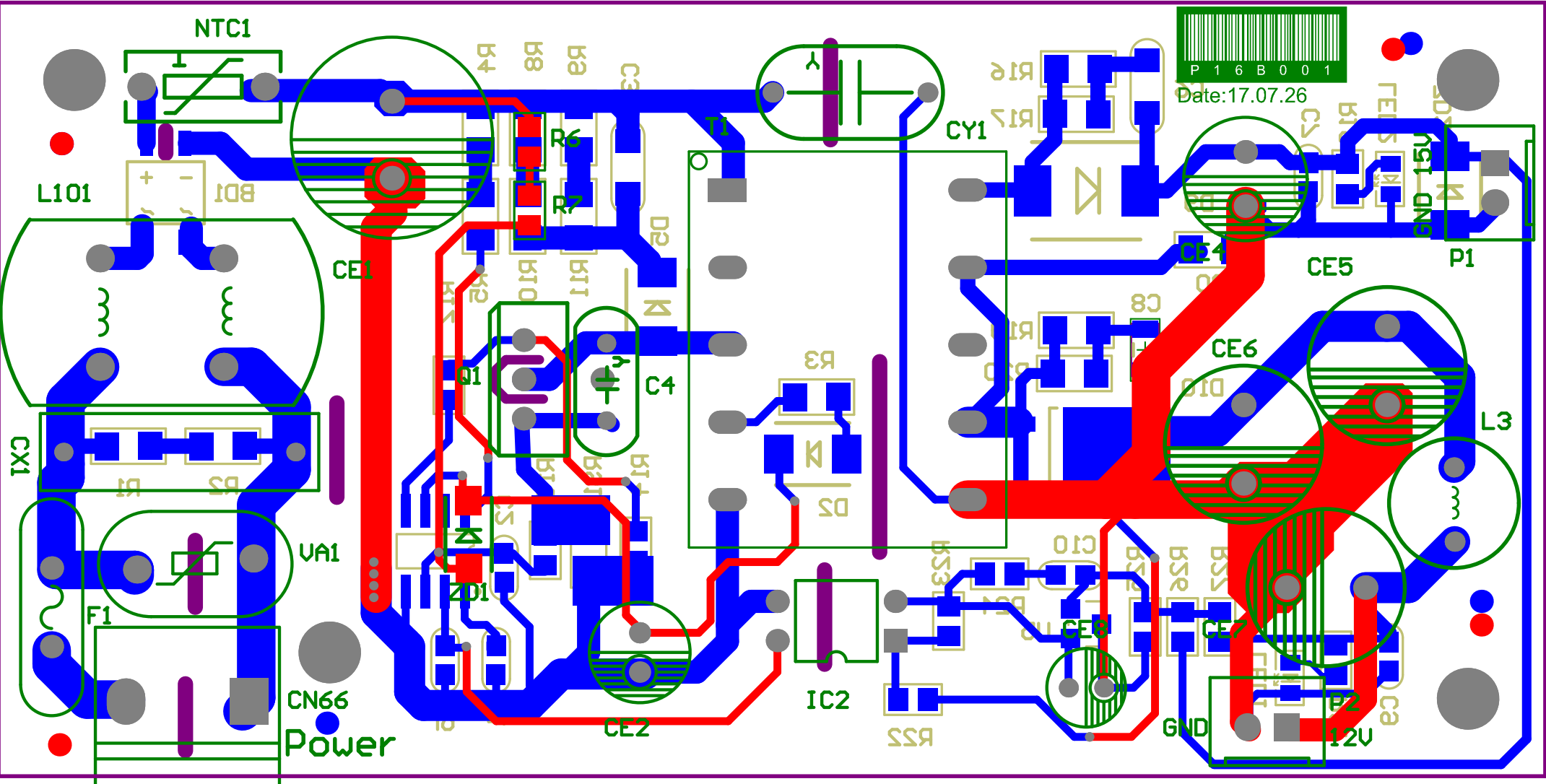
可用 10Ω-100Ω 电阻进行RC滤波设计, 根据测试情况进行修正

$$\Pi = (12-2.5)/56K =$$

Title		
Size	Number	Revision
A3		
Date:	2017/8/23	Sheet of
File:	C:\Users\... \SMPS.SchDoc	Drawn By:



Date:17.07.26



Comment	Description	Designator	Footprint	LibRef	Quantity
BT6S TO269	整流桥	BD1	MB6S	MB6S/B4S	1
100nF 50V C10805	Resistor	C1	C0805	Res1	1
100pF 50V C0805	Capacitor	C2	C0805	Cap	1
1nF 1KV C1206	Capacitor	C3	C1206	Cap	1
Cap Semi	Capacitor (Semiconductor SIM Model)	C4	Ycap-1KV	Cap Semi	1
100nF 50V C0805	Capacitor, Capacitor (Semiconductor SIM Model), Capacitor (Semiconductor SIM Model), Capacitor (Semiconductor SIM Model)	C5, C7, C9, C10	C0805	Cap, Cap Semi, Cap Semi, Cap Semi	4
0.22nF C1206	Capacitor (Semiconductor SIM Model)	C6	C1206	Cap Semi	1
0.47nF C1206	Capacitor (Semiconductor SIM Model)	C8	C1206	Cap Semi	1
33uF 400V CD13*13	插件点解电容	CE1	CD13	Cap Pol1	1
47uF 25V CD6*12	Polarized Capacitor (Radial)	CE2	CD6.5-2.5	Cap Pol1	1
220uF 25V CD8*16	Polarized Capacitor (Radial)	CE4	CD8	Cap Pol1	1
680uF 25V CD10*20	Polarized Capacitor (Radial)	CE5, CE6, CE7	CD10	Cap Pol1	3
10uF 25V CD5	Polarized Capacitor (Radial)	CE8	CD5	Cap Pol1	1
Header 3	Header, 3-Pin	CN66	VH3.96-3PL2-DIP	Header 3	1
0.47uF 275V P=15	Capacitor	CX1	XCAP-150	Cap	1
2.2nF 250V P=7.5	Capacitor	CY1	YCAP	Cap	1
FR105 DO214AA/SMB	Default Diode	D2	DO214AA/SMB	Diode	1
M7 DO214AA	Default Diode	D5	DO214AA/SMB	Diode	1
1N5400 DO214-AB/SMC	整流二极管	D9	DO214AB/SMC	Diode 1N5400	1
Diode-Dual		D10	TO252-3	Diode-Dual	1
RF250-1000 DIP2	Fuse	F1	RF250-1000	Fuse 2	1
LD7576 GS SOIC8	Generic Phase Locked Loop	IC1	SO8	PLL	1
EL817C	4-Pin Phototransistor Optocoupler	IC2	DIP4	Optoisolator1	1
4.7uH 10A	绕线功率电感	L3	LD8	Inductor Iron	1
UU9.8 15mH 8*7	共模扼流圈	L101	CHOKE7 *8	Inductor common mode	1
绿色 D=3 直插	Typical INFRARED GaAs LED	LED1, LED2	LED0805	LED0	2
20D-13.3A	PTC/NTC	NTC1	NTC-4.5*9-PIN8	可变电阻	1
	Header, 2-Pin	P1, P2	XH2.54-2PL-DIP	Header 2	2
CJ2302	MOS管-N型	Q1	MOS-N	MOSFET-N1	1
0R %1 R1206	Resistor	R0	R1206	Res3	1
510K %1 R1206	Resistor	R1, R2	R1206	Res1	2
2.2R %1 R1206	Resistor	R3	R1206	Res1	1
5.6K %1 R1206	Resistor	R4, R5	R1206	Res1	2
1M %1 R0805	Resistor	R6	R0805	Res1	1
2M %1 R0805	Resistor	R7	R0805	Res1	1
200K %1 R1206	Resistor	R8, R9, R10, R11	R1206	Res1	4
7.5R %1 R0805	Resistor	R12	R0805	Res1	1
1K %1 R0805	Resistor	R13, R22, R24	R0805	Res1	3
10K %1 R0805	Resistor	R14, R25	R0805	Res1	2
22R %1 R1206	Resistor	R16, R17, R19, R20	R1206	Res3	4
4.7K %1 R0805	Resistor	R18, R21	R0805	Res2	2
470 %1 R0805	贴片电阻	R23	R0805	Res1	1
160K %1 R0805	贴片电阻	R26	R0805	Res1	1
56K %1 R0805	Resistor	R27	R0805	Res1	1
680mΩ %1 R1206	Resistor	RS1	R1206	Res1	1
THF 81EE25P20		T1	EE25	THF 81EE25P20	1
TL431A SOT-23A	可调稳压器	U5	SOT-23	TL431	1
14D561 DIP2	Varistor (Voltage-Sensitive Resistor)	VA1	10D471K	Res Varistor	1
D Zener	Zener Diode	ZD1	DO214AC/SMA	D Zener	1
D Zener	Zener Diode	ZD2	DO214AA/SMB	D Zener	1