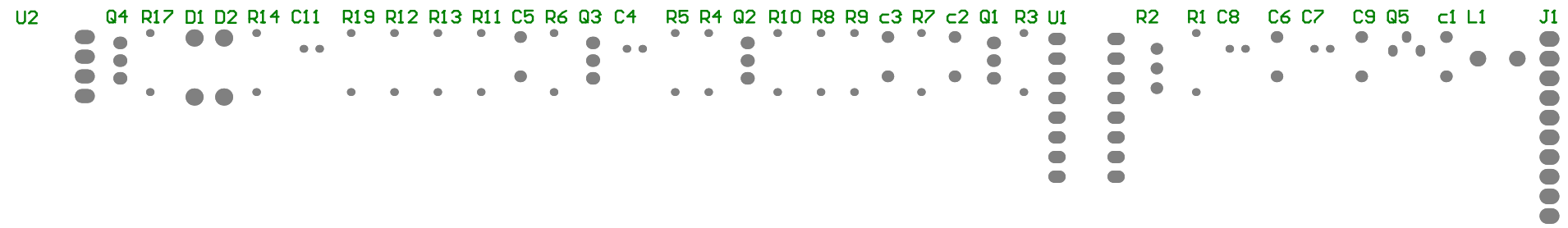


Title		
Size	Number	Revision
A4		
Date:	2016/6/14	Sheet of
File:	L:\PCB工程\鱼机升压驱动板.SchDoc	Drawn By:



Comment	Description	Designator	Footprint	LibRef	Quantity
104		C1, C2, C5, C6, C9	瓷片电容	瓷片电容	5
222		C3	瓷片电容	瓷片电容	1
4.7UF/16V		C4	16V100UF	电解电容	1
100UF/16V		C7	16V100UF	电解电容	1
100UF/10V		C8	16V100UF	电解电容	1
103		C10	瓷片电容	瓷片电容	1
47UF/10V		C11	16V100UF	电解电容	1
1N4148		D1, D2	1N4007	1N4007	2
		J1	CN插针	CN插针-10	1
100UH		L1	工字电感	工字电感	1
B882		Q1, Q3	D882	B882	2
B772		Q2, Q4	B772	B772	2
78L05		Q5	7805	7805	1
220K		R1	1/4电阻	1/4电阻	1
20K		R2	可调电阻	可调电阻	1
1K		R3, R17, R18	1/4电阻	1/4电阻	3
12K		R4	1/4电阻	1/4电阻	1
47R		R5	1/4电阻	1/4电阻	1
2K		R6	1/4电阻	1/4电阻	1
22R		R7, R11	1/4电阻	1/4电阻	2
10K	[NoValue], [NoValue], [NoValue], 10K	R8, R12, R15, R19	1/4电阻	1/4电阻	4
10R		R9, R13	1/4电阻	1/4电阻	2
2.2K		R10, R14	1/4电阻	1/4电阻	2
47K		R16	可调电阻	可调电阻	1
3K3		R20	1/4电阻	1/4电阻	1
2K2		R21	1/4电阻	1/4电阻	1
EG3525		U1	EG3525	EG3525	1
前级过流保护		U2	LM358	LM358	1