

**T1 Switching Transformer Turns**  
W1 - 68  
W2 - 14  
W3 - 13

**Remark**  
SEZ91/HV: C8, C9 - 25V/680uF  
SEZ91/KR: C8, C9 - 35V/470uF

**Fuse Specification**  
1. Littlefuse : LT-5-010-H (1A, 250V)  
2. Sava FuseTech : SR-5 (1A, 250V)

**Line Filter :**  
Seoul Electronics & Telecom Co., Ltd  
Inductance: 30mH (Min.)

ZD1(18V) should be inserted, when PC817 is detected.

**DC Output Voltage is determined by following equation:**  

$$[(R23 + R27) / R24 + 1] \times 2.5V = DC\ Output$$
  
**DC Output = 14.5V**

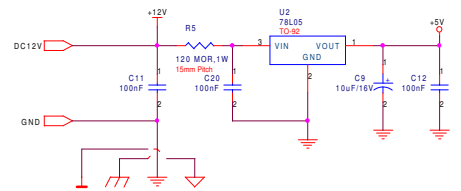
**Switching Circuitry**

**Power Consumption:**

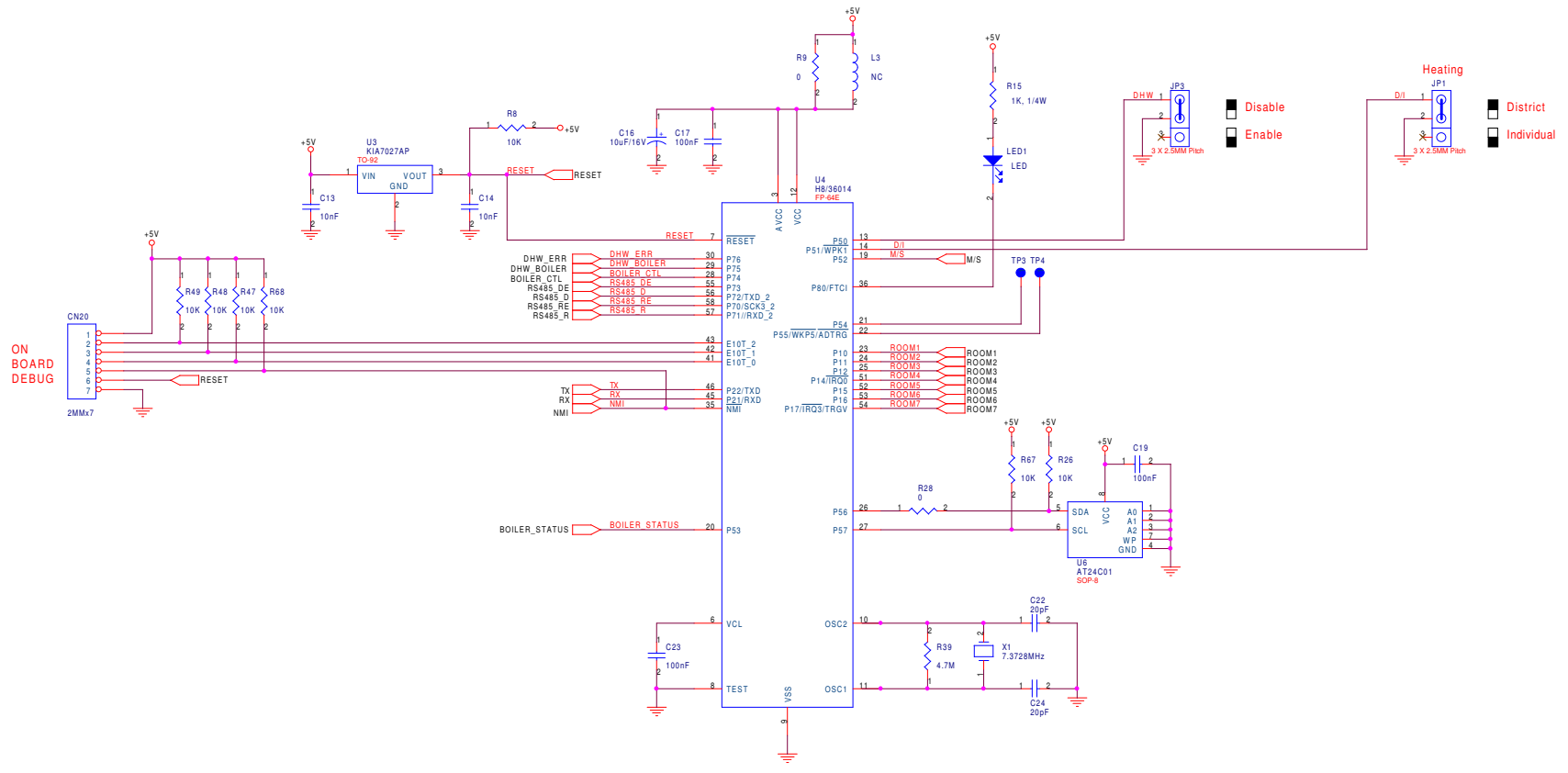
- 1. Stand-by Power Consumption = 0.24W
- 2. Efficiency = >78%
- 3. 7.9W at 500mA load, 9.2W at 600mA load

**Actual Max. Power Consumption without PLC modem**

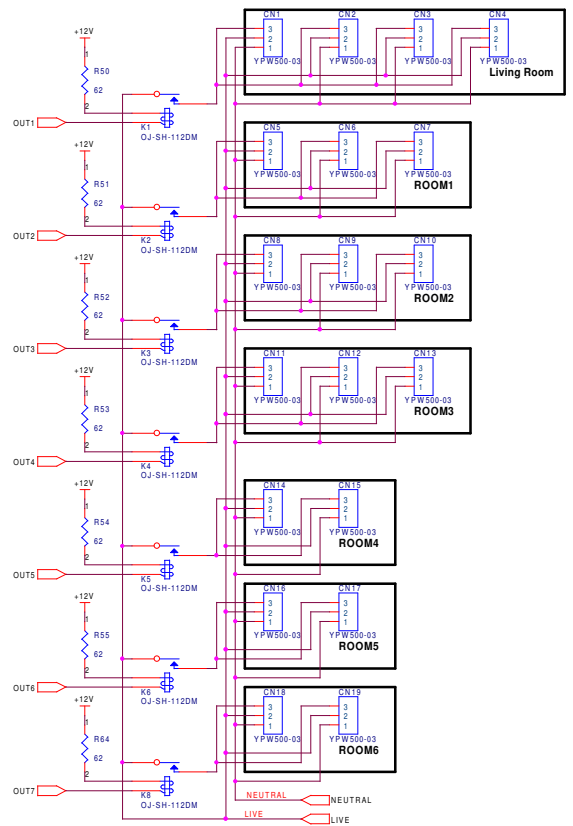
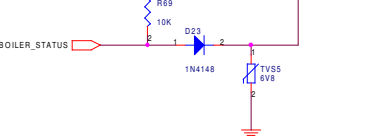
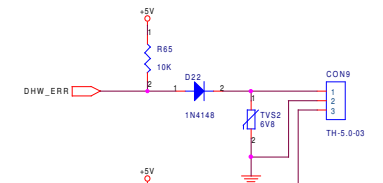
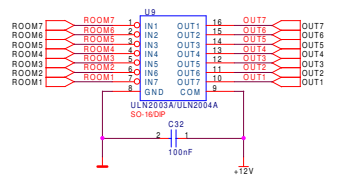
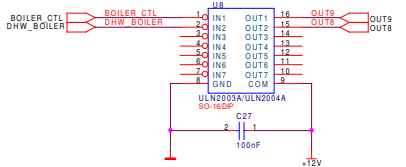
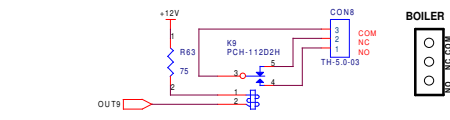
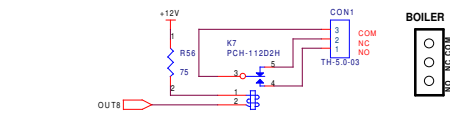
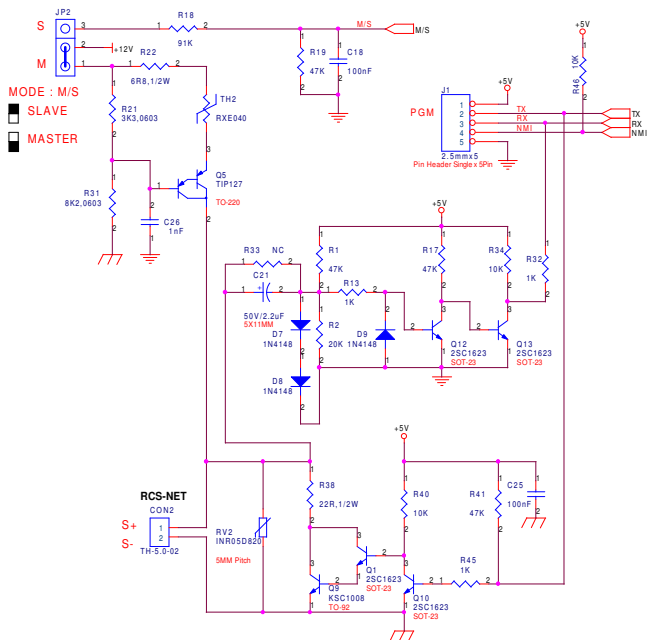
- 8W (6RDD, All relay is ON)
- 4W (OUT Mode Condition, 6RDD, All relay is OFF)



Rev.	Date	Rev. Content	App.
<b>WKK TECHONGLY LTD.</b>			
TITLE : SCH. SEZ92/KR			
PART NO : SEZ92/KR		DWG NO :	
MODEL NAME : SEZ92/KR		MODEL NO : 0819	
Prepared : CM Leung	Checked : Risky Tse		
Date : 4-Sep-06	Date : 4-Sep-06		



Rev.	Date:	Rev. Details	App.
<b>WKK TECHONGLY LTD.</b>			
TITLE: SCH, SEZ92/KR			
PART NO: SEZ92/KR		DWG NO:	
MODEL NAME: SEZ92/KR		MODEL NO: 0819	
Prepared: CM Leung	Checked: Ricky Tam	Date: 4-Sep-06	Date: 4-Sep-06
2			

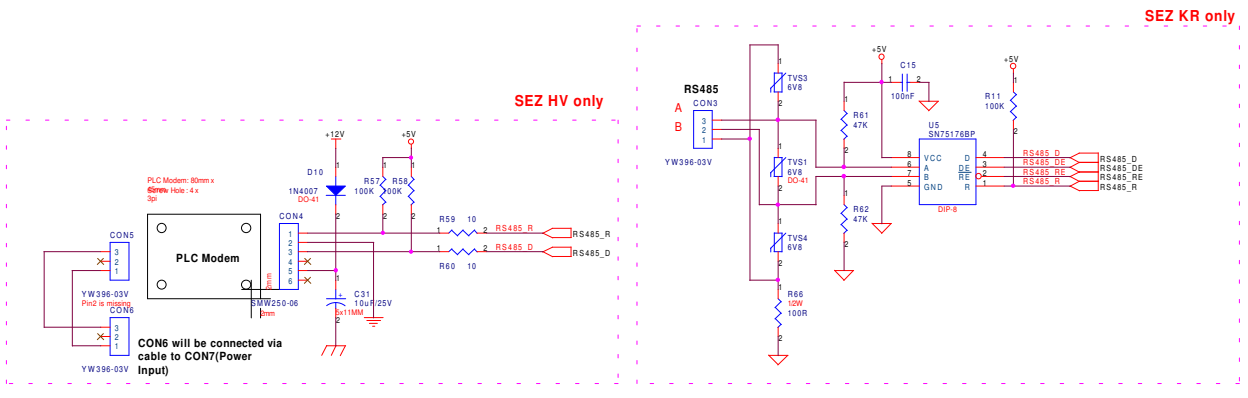


**REMARK**

1. Factory Delivery Setting Master Mode  
Individual Heating Mode
2. Pluggable Terminal Block

CON1: AnyTek: TH-5.0-03(Terminal), OP-5.0-03(Pin Header)  
 Dinkle: ED130-03P(Terminal), EDH130-03P(Pin Header)

CON2,3: AnyTek: TH-5.0-02(Terminal), OP-5.0-02(Pin Header)  
 Dinkle: ED130-02P(Terminal), EDH130-02P(Pin Header)



Rev.	Date	Rev. Content	App.
<b>WKK TECHONGLY LTD.</b>			
TITEL: SCH. SEZ92/KR			
PART NO: SEZ92/KR		DWG NO:	
MODEL NAME: SEZ92/KR		MODEL NO: 0819	
Prepared: CM Leung	Date: 4-Sep-06	Checked: Risky Tse	Date: 4-Sep-06