



TDPS500E2C1 Totem Pole PFC Evaluation Board User Manual

The package for TDPS500E2C1-KIT includes:

1. The board;
2. User's Manual;
3. USB drive with documents. In the USB drive, we have:
 - Datasheets of TPH3006PS/PD, TPS3410/11/13PK,
 - AN0002, AN0003;
 - User's Manual;
 - The paper that was published in Bodo's Power Systems magazine for this Totem Pole PFC evaluation board.



Fig.1 Totem pole PFC Evaluation Board



Fig. 3. Totem Pole PFC Evaluation Board Layout, Top Layer

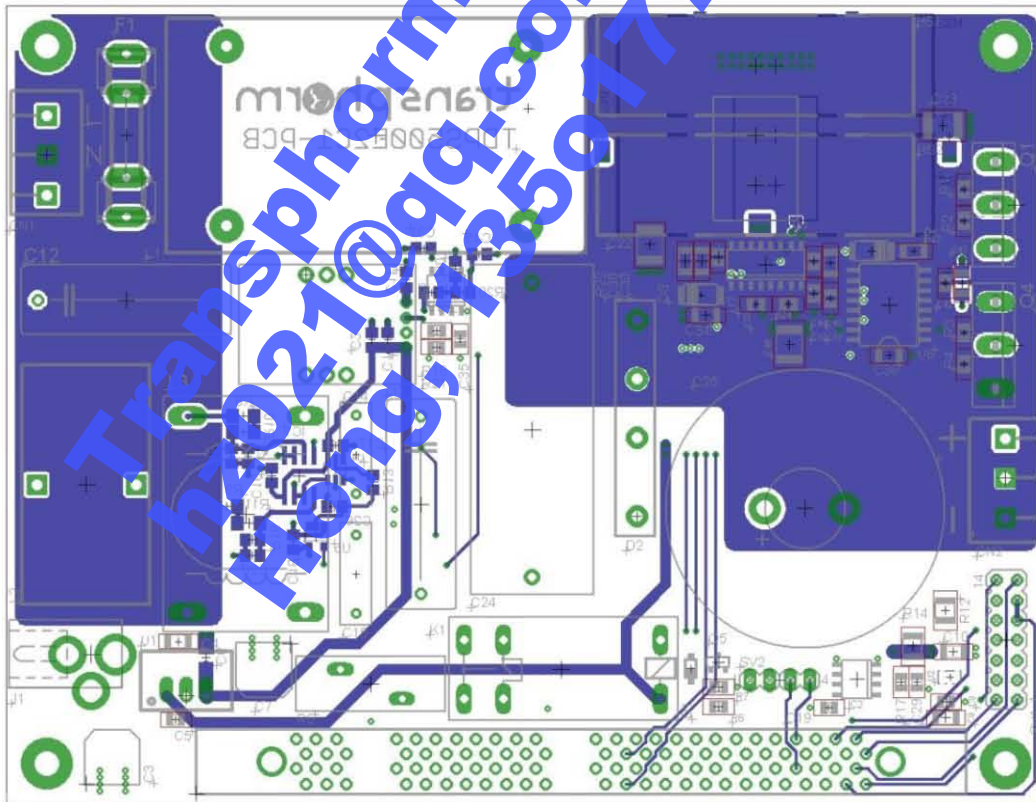


Fig. 4. Totem Pole PFC Evaluation Board Layout, Bottom Layer

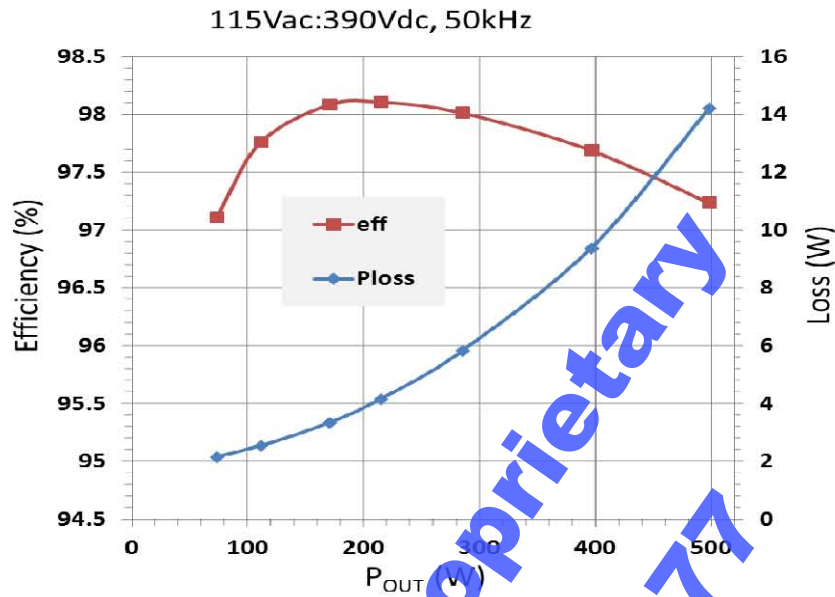


Fig. 7. The efficiency result for Totem Pole PFC board at 115Vac input

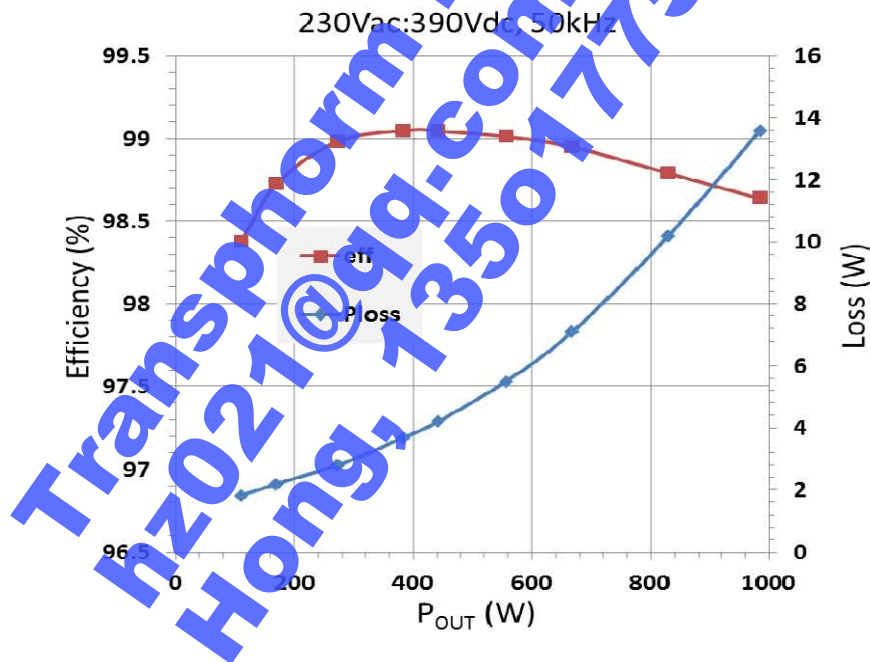


Fig. 8. The efficiency result for Totem Pole PFC board at 230Vac input

WARNING: There are no specific current or voltage protection; the users need to follow the test procedure and operation limits carefully. Please refer to application note AN0002 and AN0003 for further information.