

EMI Filter for DC Power Line

The PWC series is the noise countermeasure part of the SMD type the core of which was ferrite raw materials. It has the characteristic which is excellent about the noise depression-effect about the DC power line of each electronic device.

■ Feature

- Monolithic inorganic material construction for high reliability.
- Compact and achieve large allowable current, and can be used for DC power supply line.
- Tin-plated termination ensures excellent solder heat resistance and solderability.
- RoHS Compliant.

■ Applications

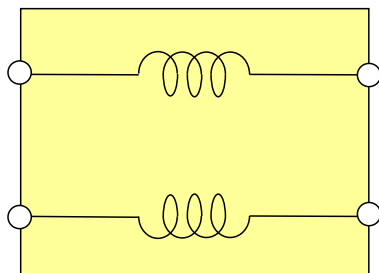
- Notebook PC, digital appliance, DC power supply line of OA machinery.
- As for robot, FA machinery, it is DC power supply line of industrial use electronics.

■ Part Number List and Rating

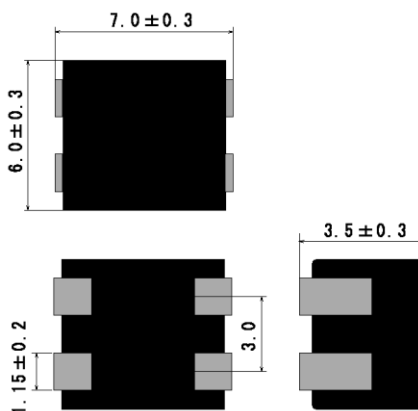
Part Number	Impedance (Ω at 100MHz)	Rated Voltage DC (V)	Rated Current DC (A)	DC Resistance (m Ω max.)	Operating temp. ($^{\circ}$ C.) ※
PWC7060L2A -01	100	100	5	5	-40~+85
PWC7060L2A -02	65	100	5	5	

※Include self-fever temperature

■ Equivalent circuit



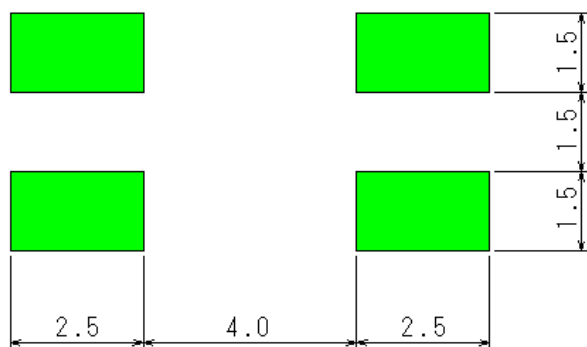
■ Dimensions (mm)



■ Appearance

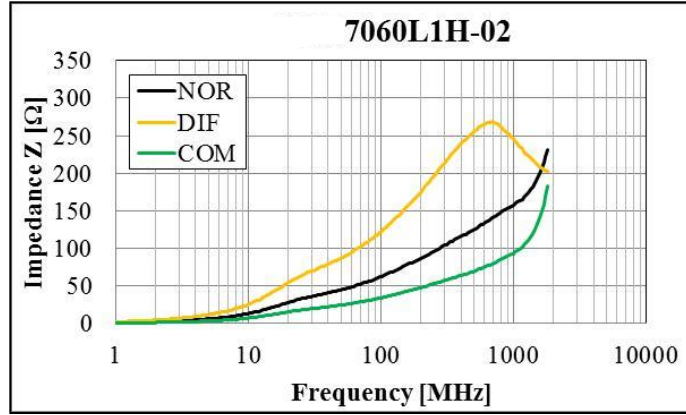
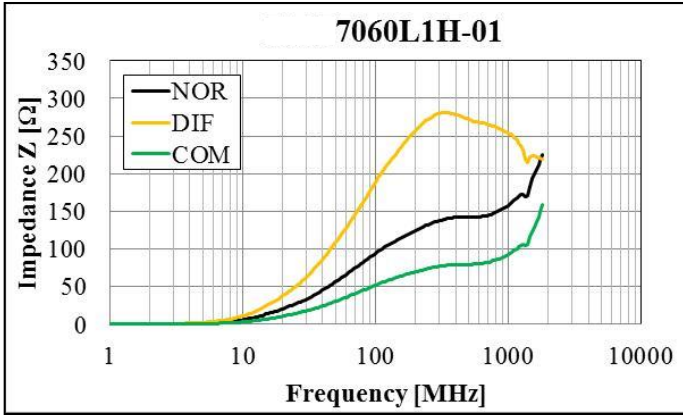


■ Recommended P.C.Board pattern

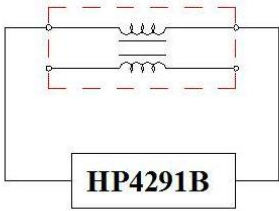


EMI Filter for DC Power Line

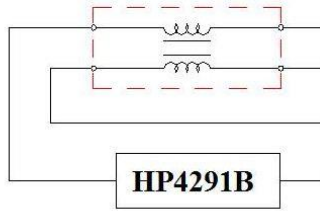
■ Impedance Frequency Characteristics ①



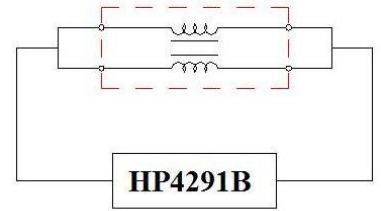
Normal mode



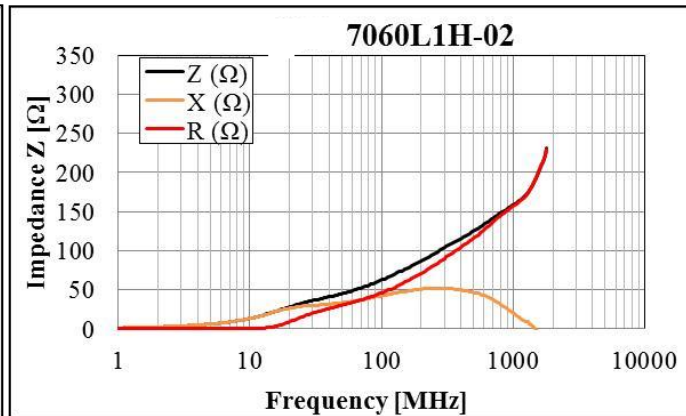
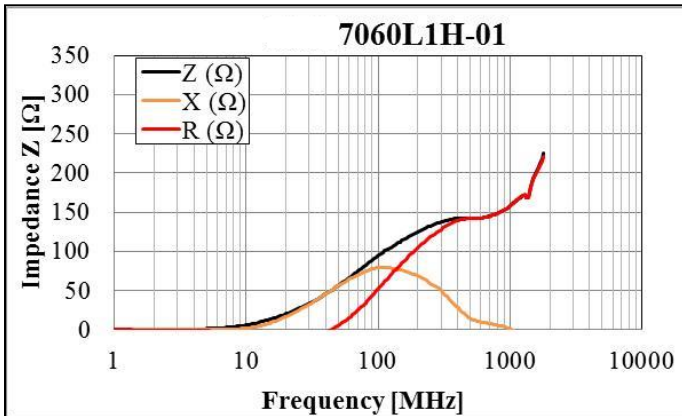
Differential mode



Common mode



■ Impedance Frequency Characteristics ②

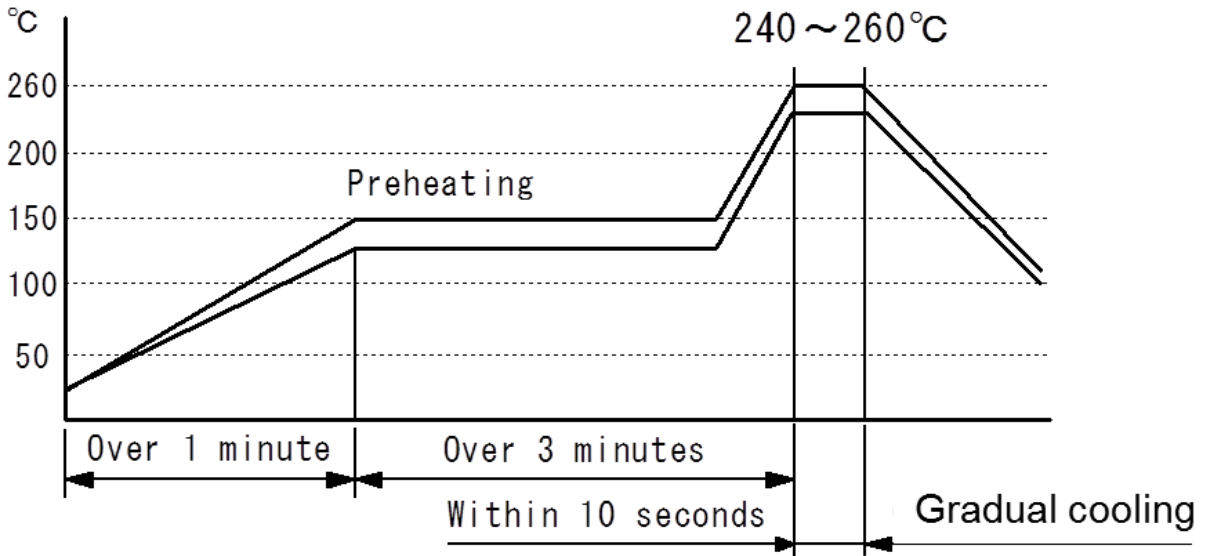


EMI Filter for DC Power Line

■ Soldering (for only reflow soldering)

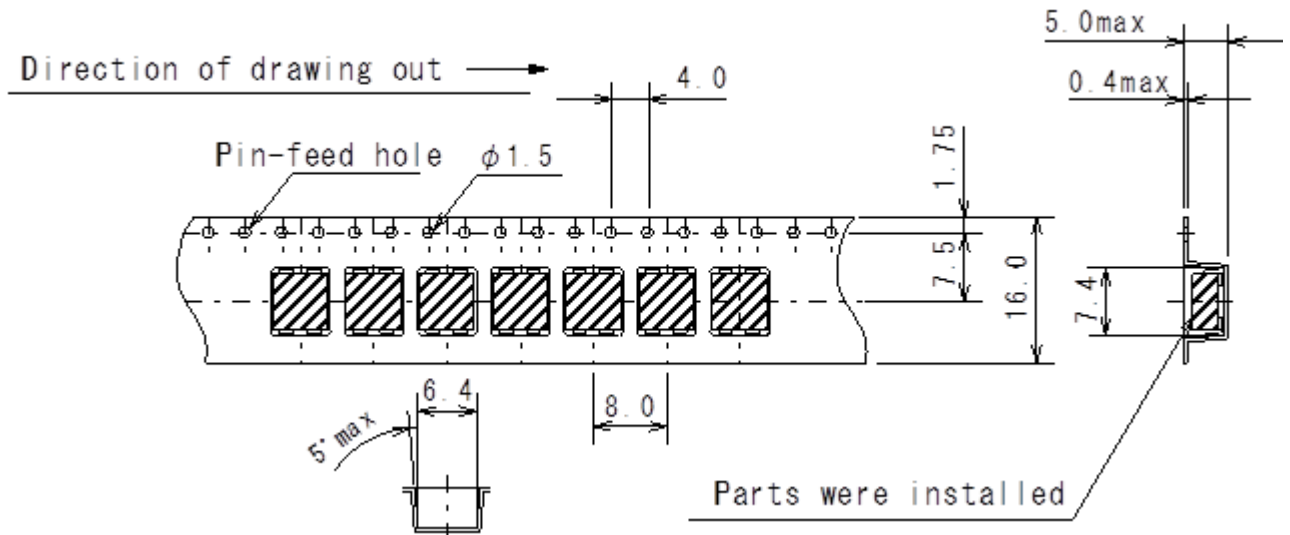
○ General cautions for soldering

For soldering, please refer to the soldering curves.
This part is lead-free soldering.



■ Taping

○ Tape size (Tape material : Plastic)



Type	Wrapping quantity
Taping	1000pcs./reel