

多彩生活 绿色地球



深圳市冠泰实业有限公司  
SHENZHEN GREATECH INDUSTRIAL CO LTD



LED 智能驱动

深圳市冠泰实业有限公司    ShenZhen greatech industrial Co., LTD

深圳市观澜街道竹村西区福庭工业区3栋3,4楼

3-4/F, Bldg 3, Futing Industrial Park, Zhucun, Guanlan Township, Baoan District, ShenZhen 518110, China

Tell: +86(755)85280302    Fax: +86(755)85280301    Mobile: +(86)18929368559    E-mail: brian@gtsy.cn

生活源于科技  
科技源于人才  
[www.gtsy.cn](http://www.gtsy.cn)

- ❖ Shenzhen Greatech Industrial., Co Ltd is established in 2001. We specialize in all types of LED Driver, switching power supply development, production, sales and supporting services. Products include LED driver, adapter (AC-DC / DC-DC power supplies). Capacity is 3000,000 units per month. Widely used in various LED lighting (tube lamps, Par lamps etc), Cordless Phone, cell phone chargers, LCD monitors, network , POS, Car adapter and other markets.
- ❖ Greatech has a strong capability of technology team with passel senior engineers, In order to provide good services for our customers, we had set up production workshops for more than 3000square meters and equipped many professional equipments.
- ❖ Greatech insists on its business philosophy-pragmatic, professional, innovation and faithful, principles: outstanding in the industry by our high quality, keeping development by our good reputation, increasing profit by our excellent management. Greatech focus on quality, technology, management, and after-sales service. We always pursuing enterprising and perfecting.

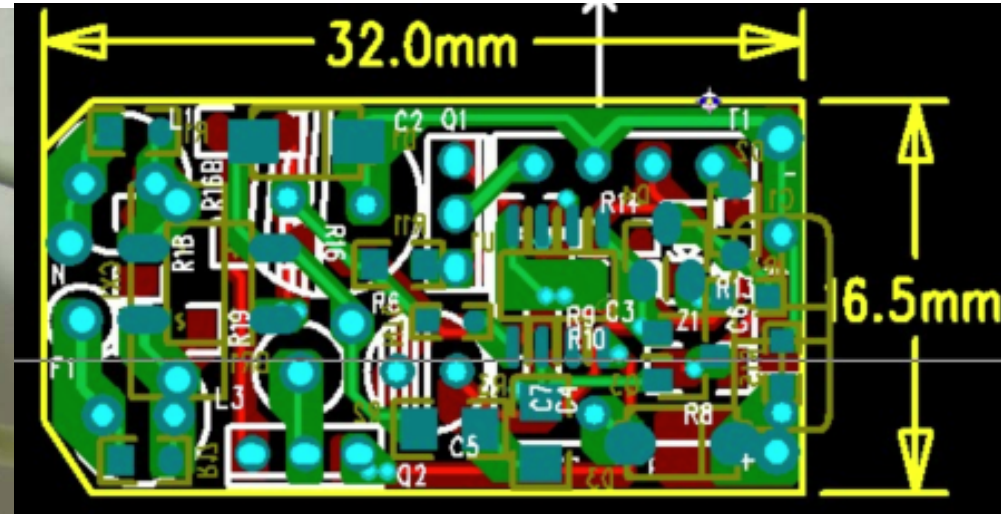
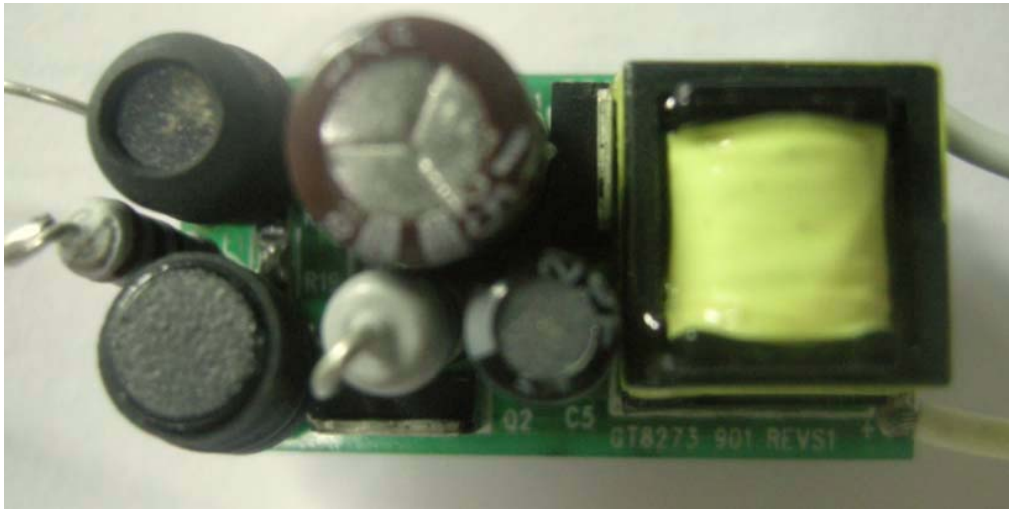
我公司成立于 2001 年,我们有 12 年的电源开发和生产经验,厂房面积 3000 平方米,月产能 30 万个电源。



1. 射灯/球泡灯调光系列..... 3~10 页
2. 射灯/球泡灯非调光系列..... 11~17 页
3. 筒灯/吸顶灯非调光系列..... 18~24 页
4. 筒灯/吸顶灯调光系列..... 25~26 页



型号 **Model:** GT05DL45N01 (**GT8273**)

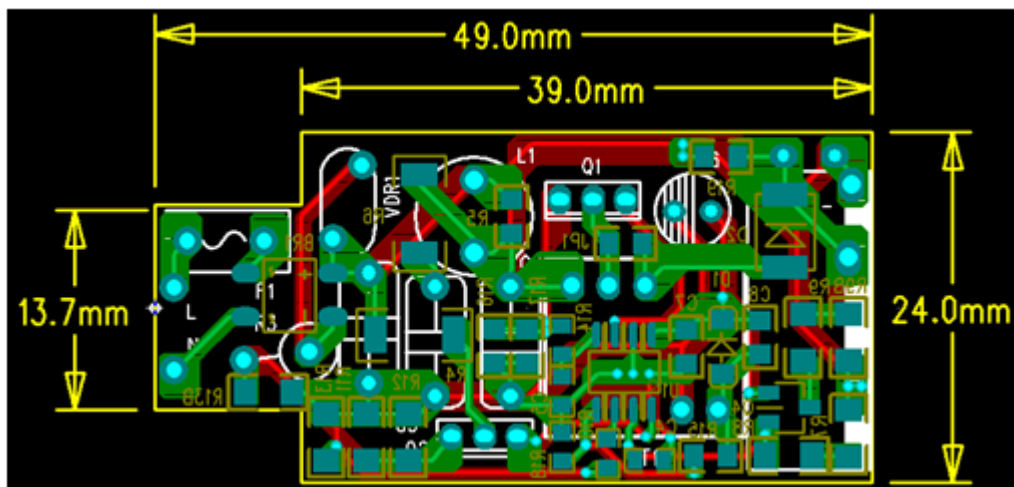


可控硅调光1~100% 无闪烁	Work with leading edge and trailing edge dimmer
输入电压: 90~135V/60Hz	Input voltage : 90~135Vac/60Hz
输出功率: ≤5W	Output power : ≤5W
输出电压: 10~13V	Output voltage : 10~13V
输出电流: 450mA +/-10%	Output current: 450mA +/-10%
转换效率: ≥75% Efficiency : ≥75%	Efficiency : ≥75%
功率因数: -	Power factor : -
设计规格: 非隔离 满足EMC	Isolator : No-isolation, Pass EMC
最大尺寸: L*W*H(33*17*19)mm	Max size : L*W*H(33*17*17)mm

注: 功率不变的情况下, 可以根据客户的输出电压电流来定制, We can change the output voltage and current according to customer spec.  
主要用以 GU10 和蜡烛灯



型号 **Model: GT8326**

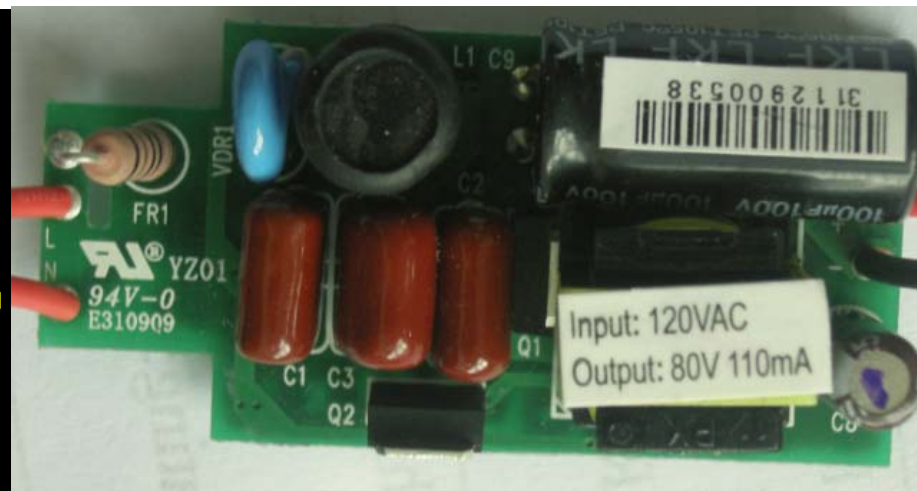
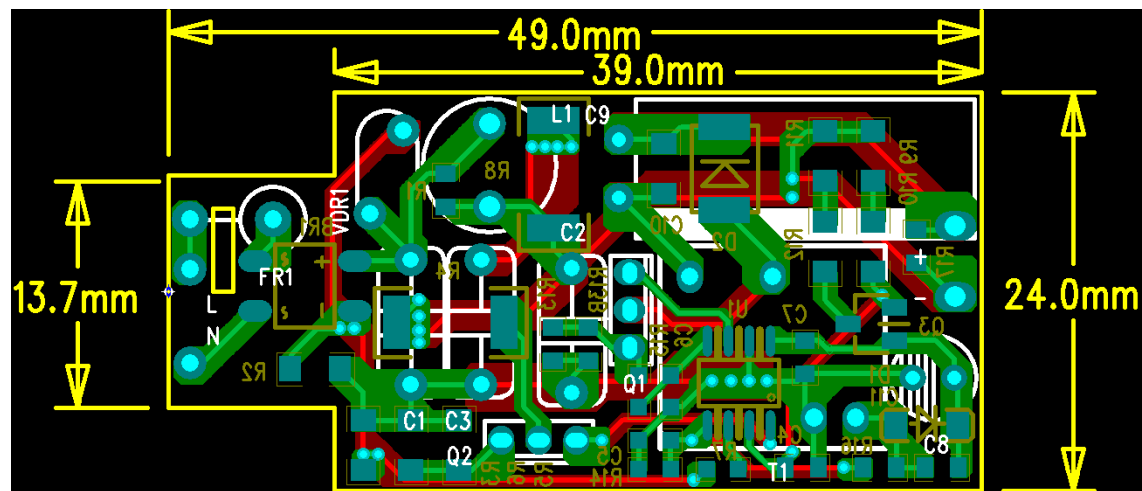


可控硅调光10~100% 无闪烁	Work with leading edge and trailing edge dimmer
输入电压: 90~135V/60Hz	Input voltage : 90~135Vac
输出功率: ≤7W	Output power : ≤7W
输出电压: 50V (13~14 串)	Output voltage : 30V
输出电流: 120mA +/-5%	Output current: 350mA +/-5%
转换效率: ≥82%	Efficiency : ≥82%
功率因数: >0.95	Power factor : >0.95
电流谐波: <20%	THD :<20%
设计规格: 非隔离 满足EMC	Isolator : No-isolation, Pass EMC
最大尺寸: L*W*H(49*24*17)mm	Max size : L*W*H(49*24*17)mm

注: 功率不变的情况下, 可以根据客户的输出电压电流来定制, We can change the output voltage and current according to customer spec.  
主要用以球泡和 Par20 等



型号 **Model: GT8332**

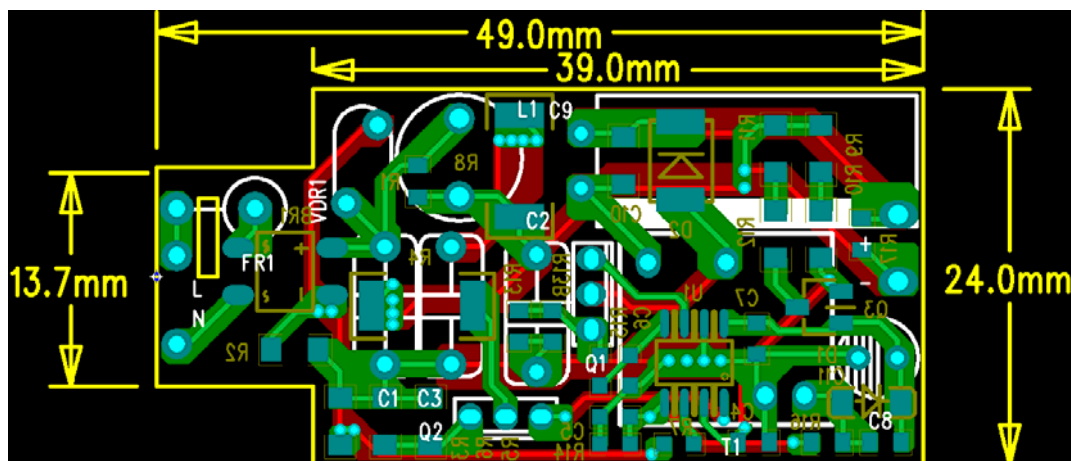


可控硅调光10~100% 无闪烁	Work with leading edge and trailing edge dimmer
输入电压: 90~135V/60Hz	Input voltage : 90~135Vac
输出功率: ≤9W	Output power : ≤9W
输出电压: 80V (21~23 串)	Output voltage : 80V
输出电流: 110mA +/-5%	Output current: 110mA +/-5%
转换效率: ≥82%	Efficiency : ≥82%
功率因数: >0.95	Power factor : >0.95
电流谐波: <20%	THD :<20%
设计规格: 非隔离 满足EMC	Isolator : No-isolation, Pass EMC
最大尺寸: L*W*H(49*24*17)mm	Max size : L*W*H(49*24*17)mm

注: 功率不变的情况下, 可以根据客户的输出电压电流来定制, We can change the output voltage and current according to customer spec.  
主要用以球泡和 Par20 等



型号 Model: **GT8339**

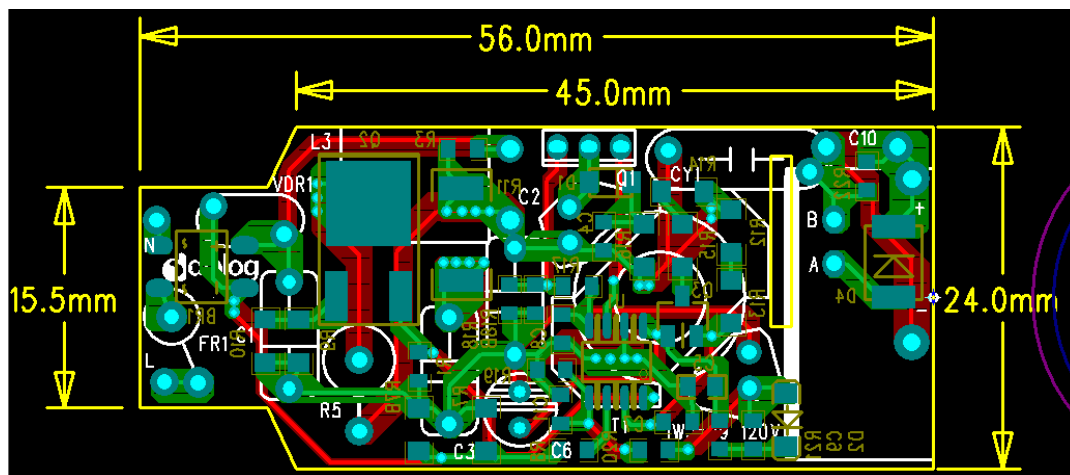


可控硅调光10~100% 无闪烁	Work with leading edge and trailing edge dimmer
输入电压: 180~264V/50Hz	Input voltage : 180~264Vac
输出功率: ≤9W	Output power : ≤9W
输出电压: 80V (21~23 串)	Output voltage : 80V
输出电流: 110mA +/-5%	Output current: 110mA +/-5%
转换效率: ≥82%	Efficiency : ≥82%
功率因数: >0.95	Power factor : >0.95
电流谐波: <20%	THD :<20%
设计规格: 非隔离 满足EMC	Isolator : No-isolation, Pass EMC
最大尺寸: L*W*H(49*24*17)mm	Max size : L*W*H(49*24*17)mm

注: 功率不变的情况下, 可以根据客户的输出电压电流来定制, We can change the output voltage and current according to customer spec.  
主要用以球泡和 Par20 等



型号 Model: **GT8331**

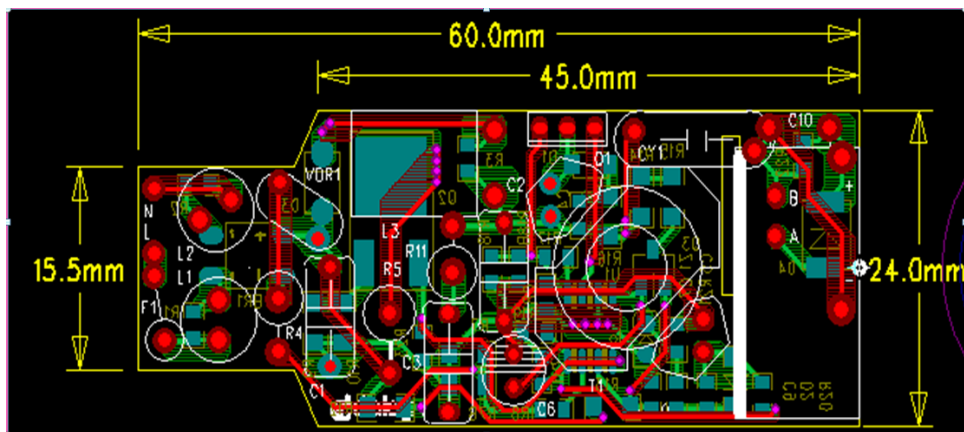


可控硅调光10~100% 无闪烁	Work with leading edge and trailing edge dimmer
输入电压: 90~135V/60Hz	Input voltage : 90~135Vac
输出功率: ≤11W	Output power : ≤11W
输出电压: 30V (8~9 串)	Output voltage : 30V
输出电流: 350mA +/-5%	Output current: 350mA +/-5%
转换效率: ≥81%	Efficiency : ≥81%
功率因数: >0.95	Power factor : >0.95
电流谐波: <20%	THD :<20%
设计规格: 隔离 3kV 耐压, 依据 UL 标准设计	Isolator :Hi-pot >3KV, Design according to UL Standard
最大尺寸: L*W*H(56*24*17)mm	Max size : L*W*H(56*24*17)mm

注: 功率不变的情况下, 可以根据客户的输出电压电流来定制, We can change the output voltage and current according to customer spec.  
主要用以球泡和 Par20 等



型号 Model: **GT8343**



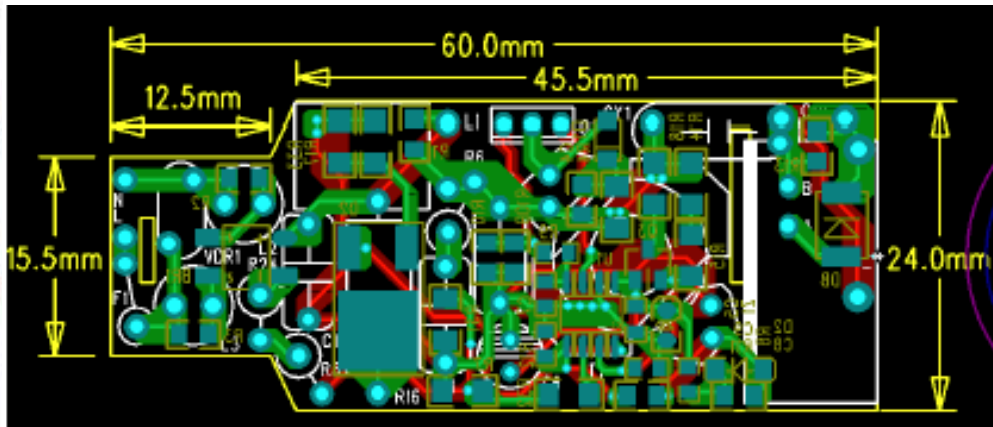
可控硅调光10~100% 无闪烁	Work with leading edge and trailing edge dimmer
输入电压: 90~135V/60Hz	Input voltage : 90~135Vac
输出功率: ≤11W	Output power : ≤11W
输出电压: 30V (8~9 串)	Output voltage : 30V
输出电流: 350mA +/-5%	Output current: 350mA +/-5%
转换效率: ≥82%	Efficiency : ≥82%
功率因数: >0.90	Power factor : >0.90
电流谐波: <20%	THD :<20%
设计规格: 隔离 3kV 耐压, 依据 UL 标准设计	Isolator :Hi-pot >3KV, Design according to UL Standard
最大尺寸: L*W*H(56*24*17)mm	Max size : L*W*H(56*24*17)mm

注: 功率不变的情况下, 可以根据客户的输出电压电流来定制, We can change the output voltage and current according to customer spec.  
主要用以球泡和 Par20 等





型号 **Model:** GT10DL35I02 (**GT8307**)

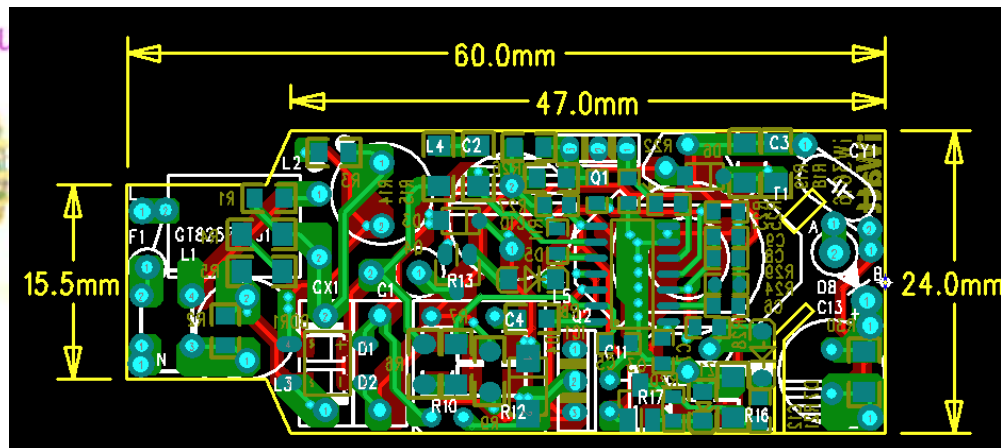
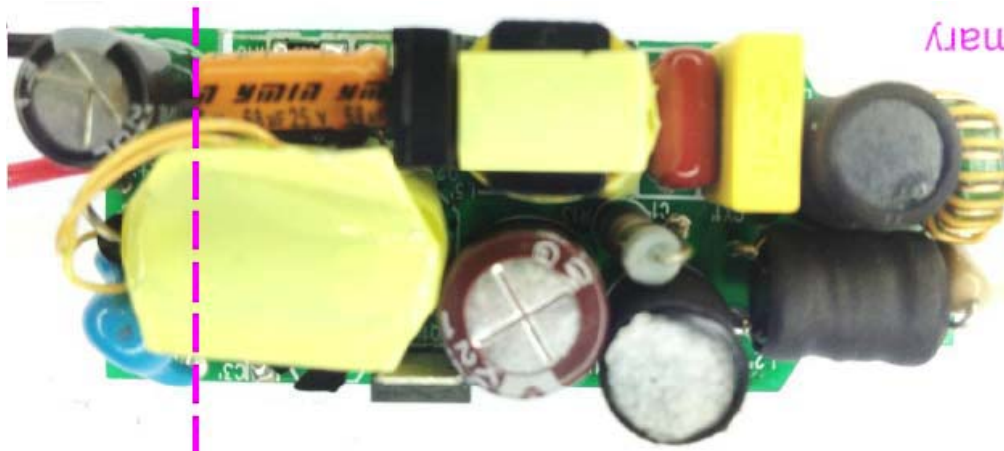


可控硅调光10~100% 无闪烁	Work with leading edge and trailing edge dimmer
输入电压: 90~135V/60Hz	Input voltage : 90~135Vac
输出功率: ≤11W	Output power : ≤11W
输出电压: 30V (8~9 串)	Output voltage : 30V
输出电流: 350mA +/-5%	Output current: 350mA +/-5%
转换效率: ≥81%	Efficiency : ≥81%
功率因数: >0.95	Power factor : >0.95
电流谐波: <10%	THD :<10%
设计规格: 隔离 3kV 耐压, 依据 UL 标准设计	Isolator :Hi-pot >3KV, Design according to UL Standard
最大尺寸: L*W*H(60*24*17)mm	Max size : L*W*H(60*24*17)mm

注: 功率不变的情况下, 可以根据客户的输出电压电流来定制, We can change the output voltage and current according to customer spec.  
主要用以球泡和 Par20 等



型号 Model: **GT8257**



可控硅调光1~100% 无闪烁	Work with leading edge and trailing edge dimmer
输入电压: 90~135V/60Hz 或185~264V/50Hz	Input voltage : 90~135Vac/60Hz or 185~264V/ 50Hz
输出功率: ≤12W	Output power : ≤10W
输出电压: 23~30V	Output voltage : 23~30V
输出电流: 350mA +/-5%	Output current: 350mA +/-5%
转换效率: ≥82%	Efficiency : ≥82%
功率因数: >0.98	Power factor : >0.98
电流谐波: <10%	THD :<10%
设计规格: 隔离 3kV 耐压, 依据CE 和UL 标准设计	Isolator :Hi-pot >3KV, Design according to CE & UL Standard
最大尺寸: L*W*H(60*24*17)mm	Max size : L*W*H(60*24*17)mm

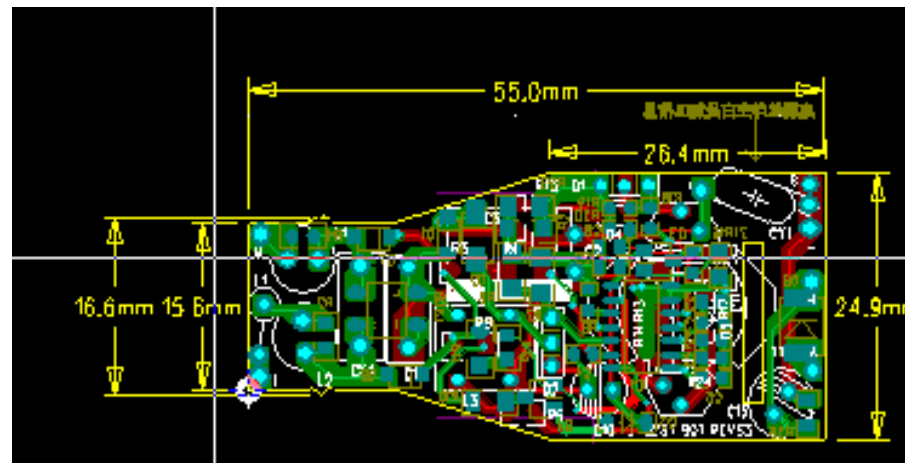
两极 PF, 电流纹波小无任何频闪

注: 功率不变的情况下, 可以根据客户的输出电压电流来定制, We can change the output voltage and current according to customer spec.

主要用以球泡和 Par20 等



型号 Model: **GT8281**



可控硅调光1~100% 无闪烁	Work with leading edge and trailing edge dimmer
输入电压: 90~135V/60Hz	Input voltage : 90~135Vac/60Hz
输出功率: ≤10W	Output power : ≤10W
输出电压: 8~11V	Output voltage : 8~10V
输出电流: 500mA +/-5%	Output current: 500mA +/-5%
转换效率: ≥73%	Efficiency : ≥73%
功率因数: >0.95	Power factor : >0.95
电流谐波: <10%	THD :<10%
设计规格: 隔离 3kV 耐压, 依据CE 和UL 标准设计	Isolator :Hi-pot >3KV, Design according to CE & UL Standard
最大尺寸: L*W*H(55*25*20)mm	Max size : L*W*H(55*25*20)mm

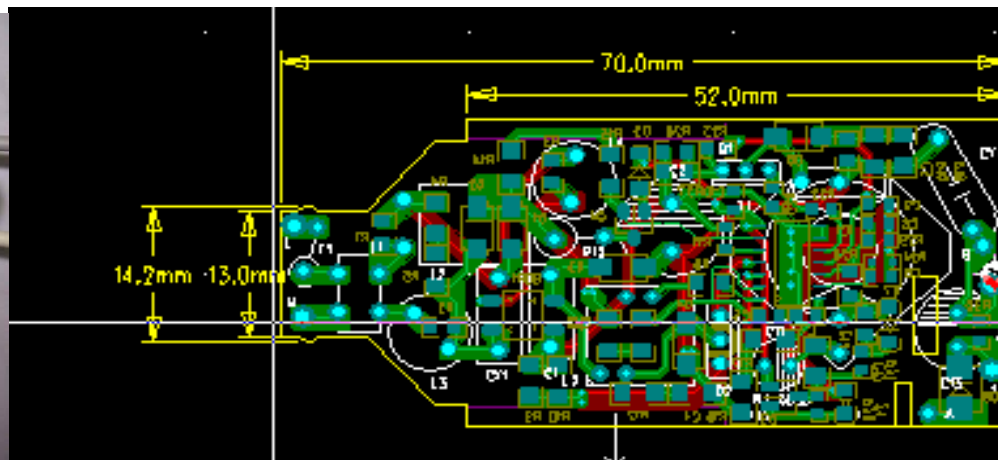
两极 PF, 电流纹波小无任何频闪

注: 功率不变的情况下, 可以根据客户的输出电压电流来定制, We can change the output voltage and current according to customer spec.

主要用以球泡和 Par20 等



型号 Model: **GT8261**



可控硅调光1~100% 无闪烁	Work with leading edge and trailing edge dimmer
输入电压: 90~135V/60Hz	Input voltage : 90~135Vac/60Hz
输出功率: ≤15W	Output power : ≤15W
输出电压: 28~36V	Output voltage : 28~36V
输出电流: 240mA +/-5%	Output current: 240mA +/-5%
转换效率: ≥83%	Efficiency : ≥83%
功率因数: >0.99	Power factor : >0.99
电流谐波: <10%	THD :<10%
设计规格: 隔离 3kV 耐压, 依据CE 和UL 标准设计	Isolator :Hi-pot >3KV, Design according to CE & UL Standard
最大尺寸: L*W*H(70*32*20)mm	Max size : L*W*H(70*32*20)mm

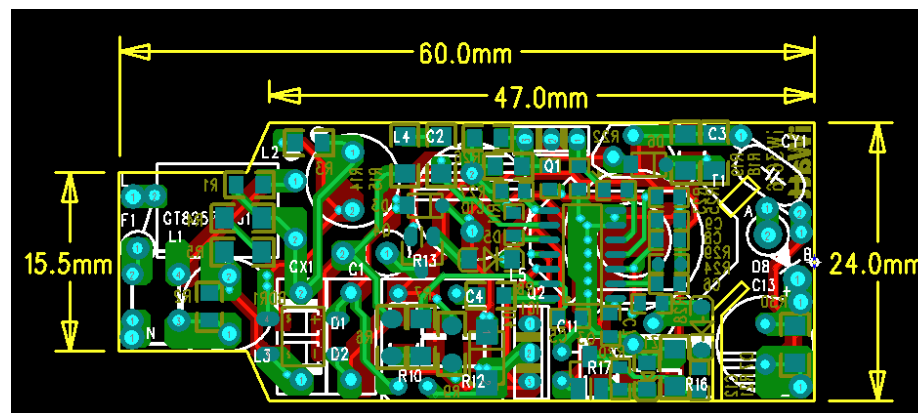
两极 PF, 电流纹波小无任何频闪

注: 功率不变的情况下, 可以根据客户的输出电压电流来定制, We can change the output voltage and current according to customer spec.

主要用以球泡和 Par30 等



型号 Model: **GT8258**



可控硅调光1~100% 无闪烁	Work with leading edge and trailing edge dimmer
输入电压: 90~135V/60Hz 或185~264V/50Hz	Input voltage : 90~135Vac/60Hz or 185~264V/ 50Hz
输出功率: ≤15W	Output power : ≤15W
输出电压: 18~24V	Output voltage : 18~24V
输出电流: 620mA +/-5%	Output current: 620mA +/-5%
转换效率: ≥83%	Efficiency : ≥83%
功率因数: >0.98	Power factor : >0.98
电流谐波: <10%	THD :<10%
设计规格: 隔离 3kV 耐压, 依据CE 和UL 标准设计	Isolator :Hi-pot >3KV, Design according to CE & UL Standard
最大尺寸: L*W*H(60*24*20)mm	Max size : L*W*H(60*24*20)mm

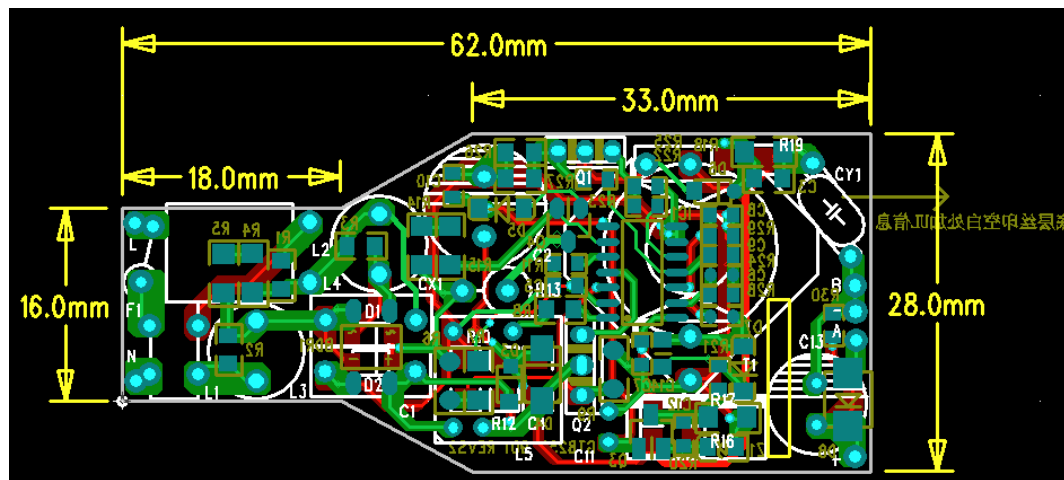
两极 PF, 电流纹波小无任何频闪

注: 功率不变的情况下, 可以根据客户的输出电压电流来定制, We can change the output voltage and current according to customer spec.

主要用以球泡和 Par30 等



型号 Model: **GT8258A**



可控硅调光1~100% 无闪烁	Work with leading edge and trailing edge dimmer
输入电压: 90~135V/60Hz 或185~264V/50Hz	Input voltage : 90~135Vac/60Hz or 185~264V/ 50Hz
输出功率: ≤15W	Output power : ≤15W
输出电压: 15~20V (或30~40V)	Output voltage : 15~20V (or 30~40V)
输出电流: 580mA (或380mA)	Output current : 580mA (or 380mA)
转换效率: ≥81%	Efficiency : ≥81%
功率因数: >0.99	Power factor : >0.99
电流谐波: <10%	THD :<10%
设计规格: 隔离 3kV 耐压, 依据CE 和UL 标准设计	Isolator :Hi-pot >3KV, Design according to CE & UL Standard
最大尺寸: L*W*H(60*24*20)mm	Max size : L*W*H(60*24*20)mm

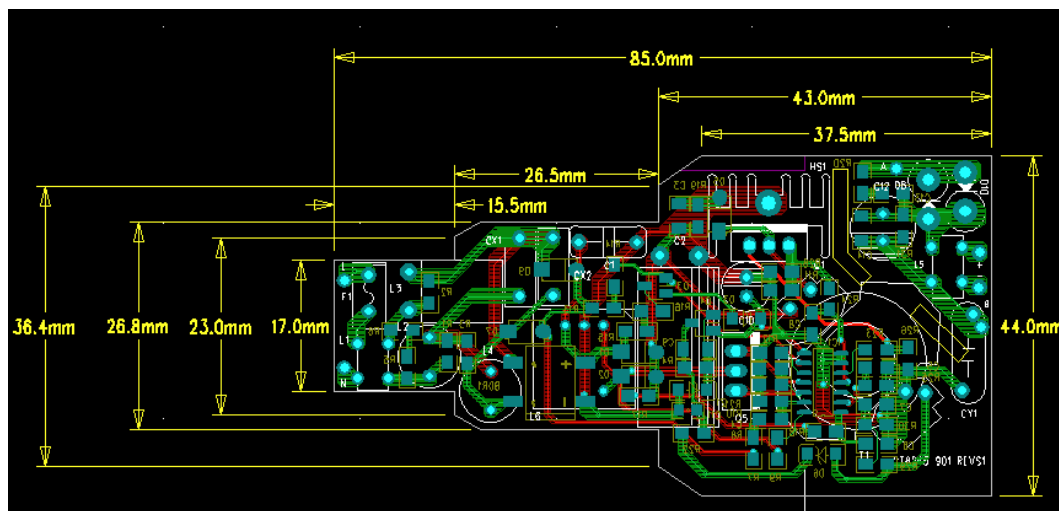
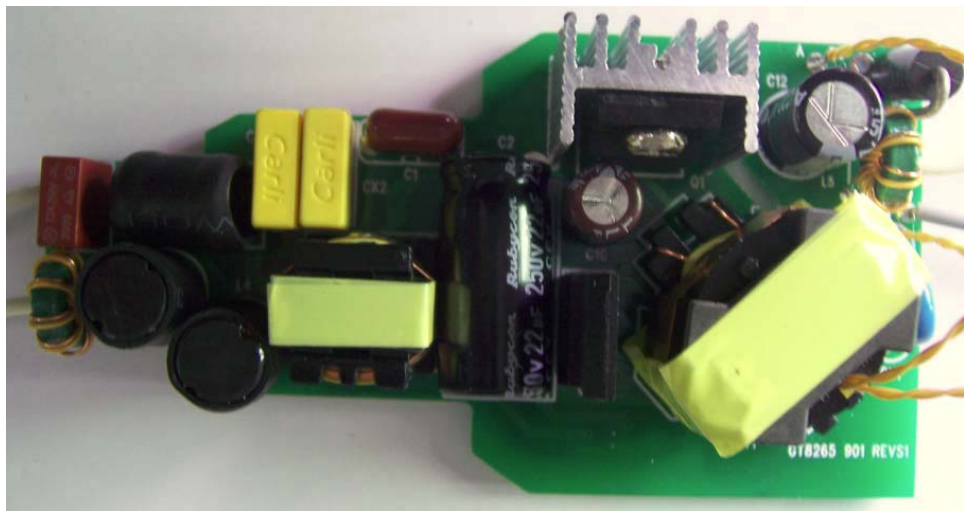
两极 PF, 电流纹波小无任何频闪

注: 功率不变的情况下, 可以根据客户的输出电压电流来定制, We can change the output voltage and current according to customer spec.

主要用以球泡和 Par30 等



型号 Model: **GT8265**



可控硅调光1~100% 无闪烁	Work with leading edge and trailing edge dimmer
输入电压: 90~135V/60Hz 或185~264V/50Hz	Input voltage : 90~135Vac/60Hz or 185~264V/ 50Hz
输出功率: ≤20W	Output power : ≤20W
输出电压: 20~25V	Output voltage : 20~25V
输出电流: 630mA	Output current : 630mA
转换效率: ≥85%	Efficiency : ≥85%
功率因数: >0.99	Power factor : >0.99
电流谐波: <10%	THD :<10%
设计规格: 隔离 3kV 耐压, 依据CE 和UL 标准设计	Isolator :Hi-pot >3KV, Design according to CE & UL Standard
最大尺寸: L*W*H(85*44*22)mm	Max size : L*W*H(85*44*22)mm

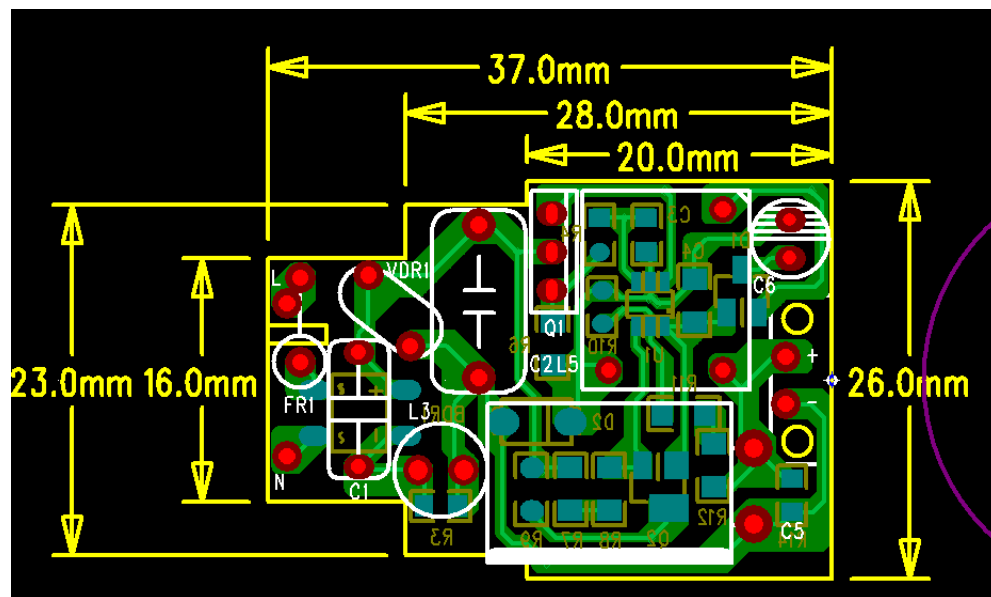
两极 PF, 电流纹波小无任何频闪

注: 功率不变的情况下, 可以根据客户的输出电压电流来定制, We can change the output voltage and current according to customer spec.

主要用以球泡和 Par30 等



型号 Model: **GT8286**



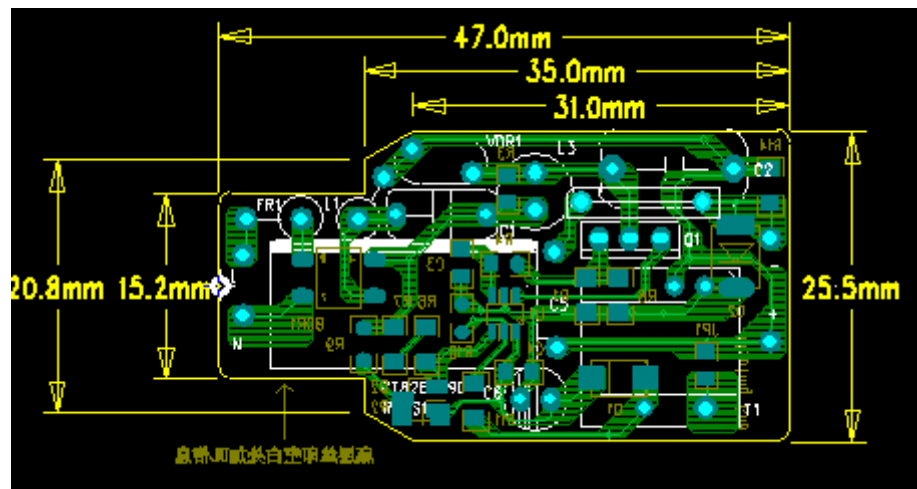
非调光	No-dimmable
输入电压: 180~264V/50Hz	Input voltage : 180~264V/ 50Hz
输出功率: ≤6W	Output power : ≤6W
输出电压: 30~48V	Output voltage : 30~48V
输出电流: 120mA +/-5%	Output current: 120mA +/-5%
转换效率: ≥90%	Efficiency : ≥90%
功率因数: >0.7	Power factor : >0.7
电流谐波: <25%	THD :<25%/
设计规格: 非隔离 满足EMC	Isolator : No-isolation, Pass EMC
最大尺寸: L*W*H(37*26*15)mm	Max size : L*W*H(27*26*15)mm

注: 功率不变的情况下, 可以根据客户的输出电压电流来定制, We can change the output voltage and current according to customer spec.  
主要用以球泡和 Par20 等





型号 Model: **GT8285**

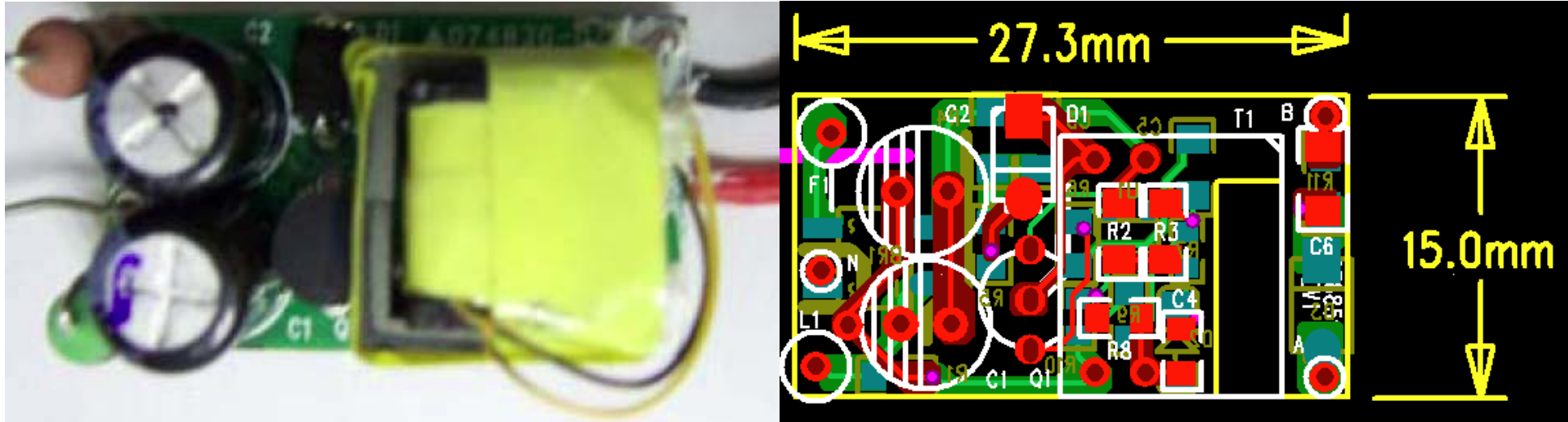


非调光	No-dimmable
输入电压: 90~264V/50Hz	Input voltage : 90~264V/ 50Hz
输出功率: ≤11W	Output power : ≤11W
输出电压: 70~85V	Output voltage : 70~85V
输出电流: 120mA +/-5%	Output current: 120mA +/-5%
转换效率: ≥86% &100Vac; ≥88% &230Vac	Efficiency : ≥86% &100Vac ; ≥88% &230Vac
功率因数: >0.9 &100Vac ; >0.8 &230Vac	Power factor : >0.9 &100Vac ; >0.8 &230Vac
电流谐波: <25%	THD :<25%/
设计规格: 非隔离 满足EMC	Isolator : No-isolation, Pass EMC
最大尺寸: L*W*H(47*26*17)mm	Max size : L*W*H(47*26*17)mm

注: 功率不变的情况下, 可以根据客户的输出电压电流来定制, We can change the output voltage and current according to customer spec.  
主要用以球泡和 Par20 等



型号 Model: **GT885**

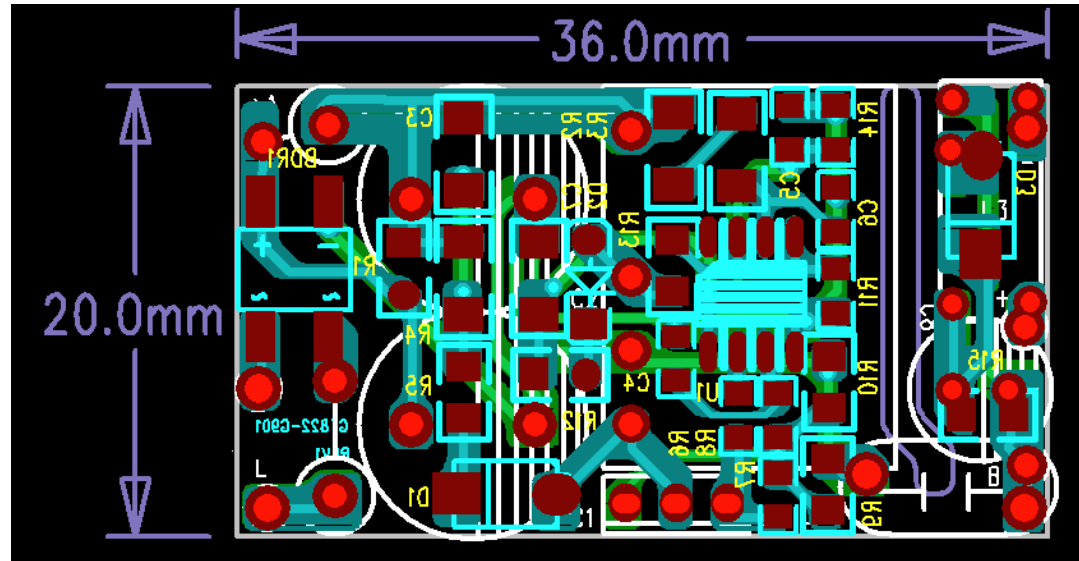
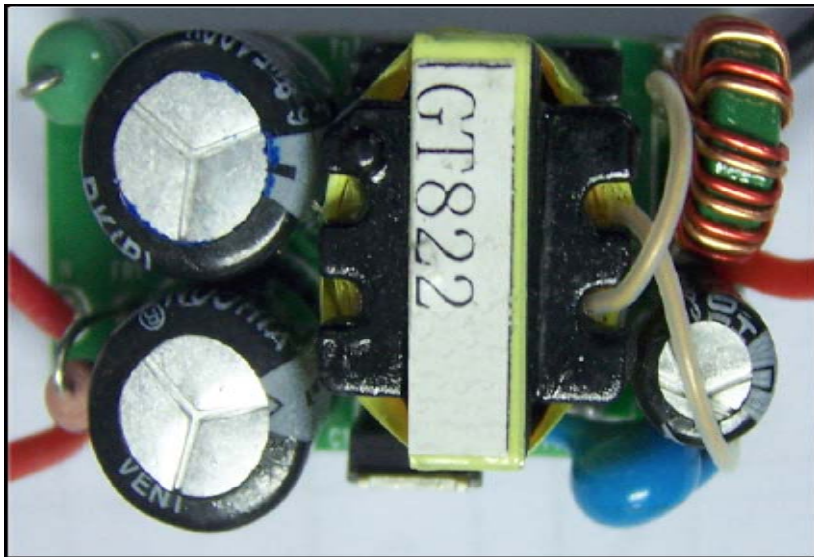


非调光	No-dimmable
输入电压: 90~264V/50~60Hz	Input voltage : 90~264V/ 50~60Hz
输出功率: ≤3.5W	Output power : ≤3.5W
输出电压: 6~10V	Output voltage : 6~10V
输出电流: 350mA +/-5%	Output current: 350mA +/-5%
转换效率: ≥68%	Efficiency : ≥68%
功率因数: >0.6 (120Vac) / >0.5 (230Vac)	Power factor : >0.6 (at 120Vac input) / >0.5 (at 230Vac input)
设计规格: 隔离 3kV 耐压, 依据CE 和UL 标准设计	Isolator :Hi-pot >3KV, Design according to CE & UL Standard
最大尺寸: L*W*H(27.5*17*15)mm	Max size : L*W*H(27.5*17*15)mm

注: 功率不变的情况下, 可以根据客户的输出电压电流来定制, We can change the output voltage and current according to customer spec.  
主要用以 GU10 和蜡烛灯等



型号 **Model:** **GT822**



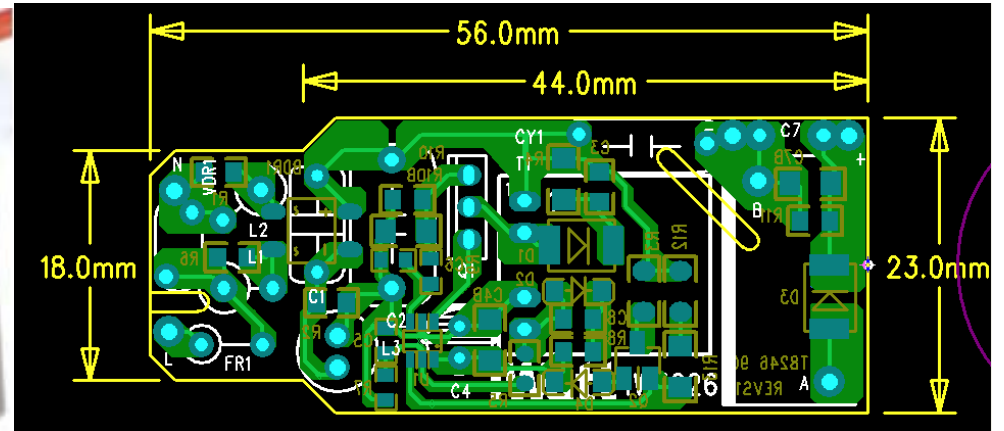
非调光	No-dimmable
输入电压: 90~264V/50~60Hz	Input voltage : 90~264V/ 50~60Hz
输出功率: ≤9W	Output power : ≤9W
输出电压: 21~29V	Output voltage : 21~29V
输出电流: 350mA +/-5%	Output current: 350mA +/-5%
转换效率: ≥75%	Efficiency : ≥75%
功率因数: >0.6	Power factor : >0.6
低纹波: 电流纹波<15%	Output ripple :current ripple<15%
设计规格: 隔离 3kV 耐压, 依据CE 和UL 标准设计	Isolator :Hi-pot >3KV, Design according to CE & UL Standard
最大尺寸: L*W*H(36*20*19)mm	Max size : L*W*H(36*20*19)mm

注: 功率不变的情况下, 可以根据客户的输出电压电流来定制, We can change the output voltage and current according to customer spec.

主要用以球泡和 Par20 等



型号 **Model:** **GT8246**

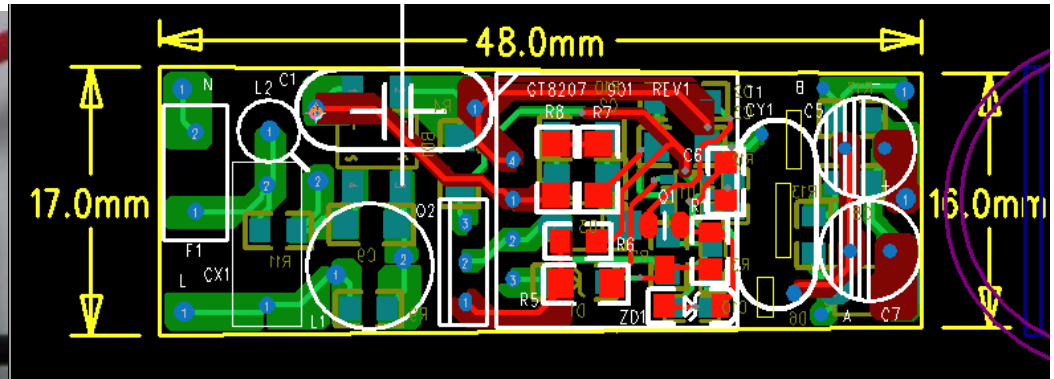
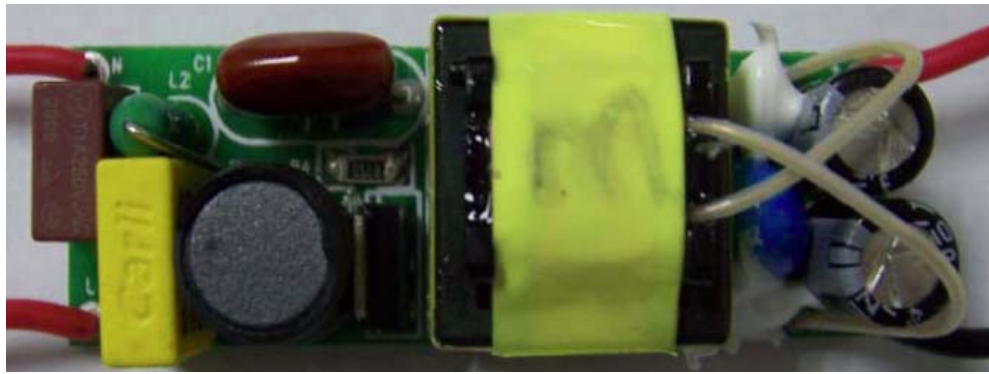


非调光	No-dimmable
输入电压: 90~264V/50~60Hz	Input voltage : 90~264V/ 50~60Hz
输出功率: ≤8W	Output power : ≤8W
输出电压: 16~24V (8~15V)	Output voltage : 16~24V (8~15V)
输出电流: 350mA +/-5% (600mA)	Output current: 350mA +/-5% (600mA)
转换效率: ≥83%	Efficiency : ≥83%
功率因数: >0.7 ( >0.9 但效率会低2%)	Power factor : >0.7 ( >0.9 But efficiency will reduce about 2%)
电流谐波: <20%/120Vac ; <30%/230Vac	THD :<20%/120Vac; <30%/230Vac
设计规格: 隔离 3kV 耐压, 依据CE 和UL 标准设计	Isolator :Hi-pot >3KV, Design according to CE & UL Standard
最大尺寸: L*W*H(56*23*14)mm	Max size : L*W*H(56*23*14)mm

注: 功率不变的情况下, 可以根据客户的输出电压电流来定制, We can change the output voltage and current according to customer spec.  
主要用以球泡和 Par20 等



型号 Model: **GT8207**

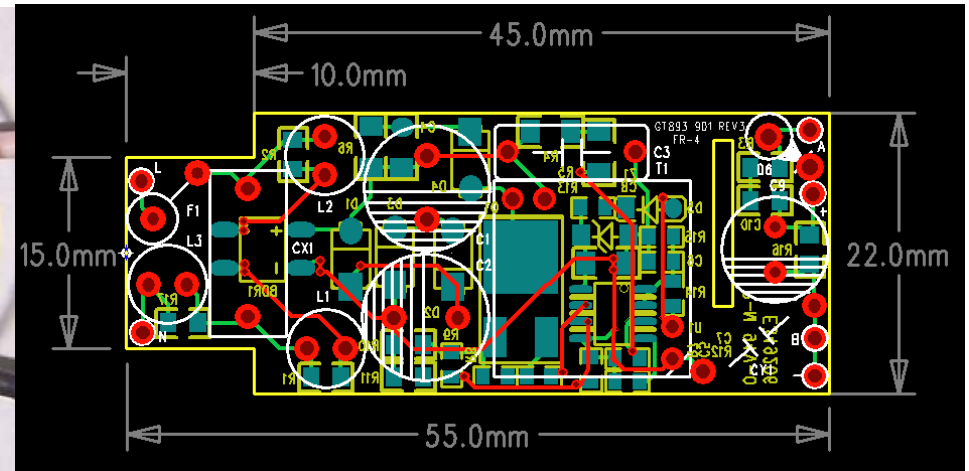


非调光	No-dimmable
输入电压: 90~264V/50~60Hz	Input voltage : 90~264V/ 50~60Hz
输出功率: ≤7W	Output power : ≤7W
输出电压: 18~27V	Output voltage : 18~27V
输出电流: 240mA +/-5%	Output current: 240mA +/-5%
转换效率: ≥80%	Efficiency : ≥80%
功率因数: >0.9	Power factor : >0.9
电流谐波: <20%/120Vac ; <30%/230Vac	THD :<20%/120Vac; <30%/230Vac
设计规格: 隔离 3kV 耐压, 依据CE 和UL 标准设计	Isolator :Hi-pot >3KV, Design according to CE & UL Standard
最大尺寸: L*W*H(48*17*15)mm	Max size : L*W*H(48*17*15)mm

注: 功率不变的情况下, 可以根据客户的输出电压电流来定制, We can change the output voltage and current according to customer spec.  
主要用以球泡和 Par20 等



型号 **Model:** **GT893**

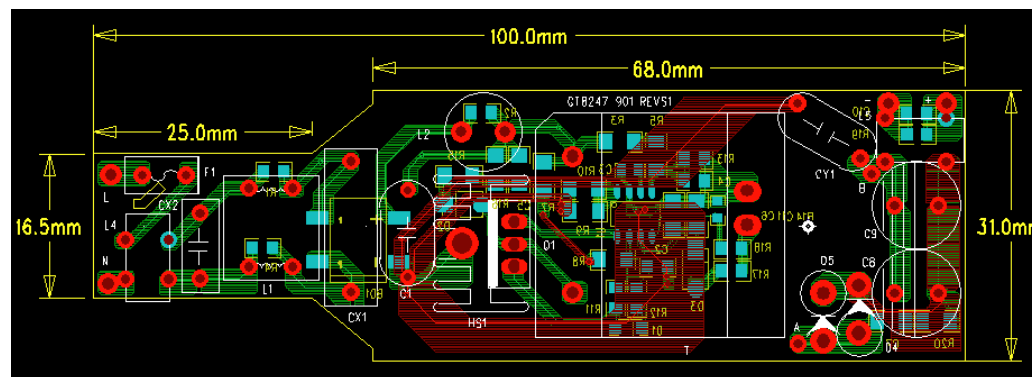
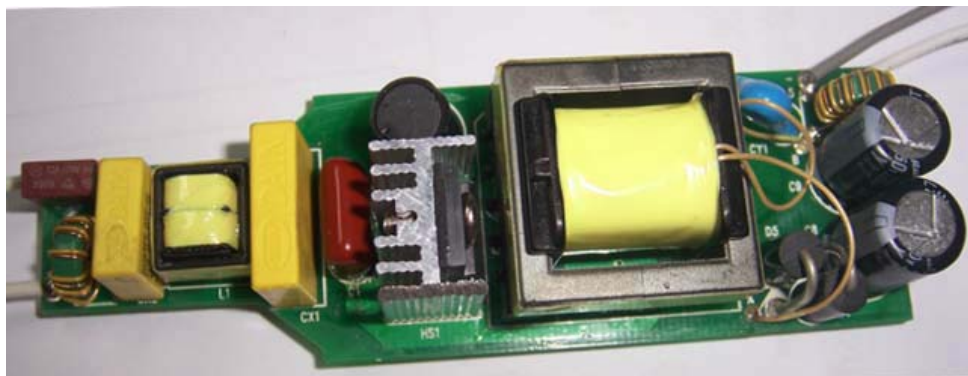


非调光	No-dimmable
输入电压: 90~264V/50~60Hz	Input voltage : 90~264V/ 50~60Hz
输出功率: ≤12W	Output power : ≤12W
输出电压: 26~32V	Output voltage : 26~32V
输出电流: 350mA +/-5%	Output current: 350mA +/-5%
转换效率: ≥82%	Efficiency : ≥82%
功率因数: >0.8	Power factor : >0.8
设计规格: 隔离 3kV 耐压, 依据CE 和UL 标准设计	Isolator :Hi-pot >3KV, Design according to CE & UL Standard
最大尺寸: L*W*H(56*22*18)mm	Max size : L*W*H(65*22*18)mm

注: 功率不变的情况下, 可以根据客户的输出电压电流来定制, We can change the output voltage and current according to customer spec.  
主要用以球泡和 Par20 等



型号 Model: **GT8247**

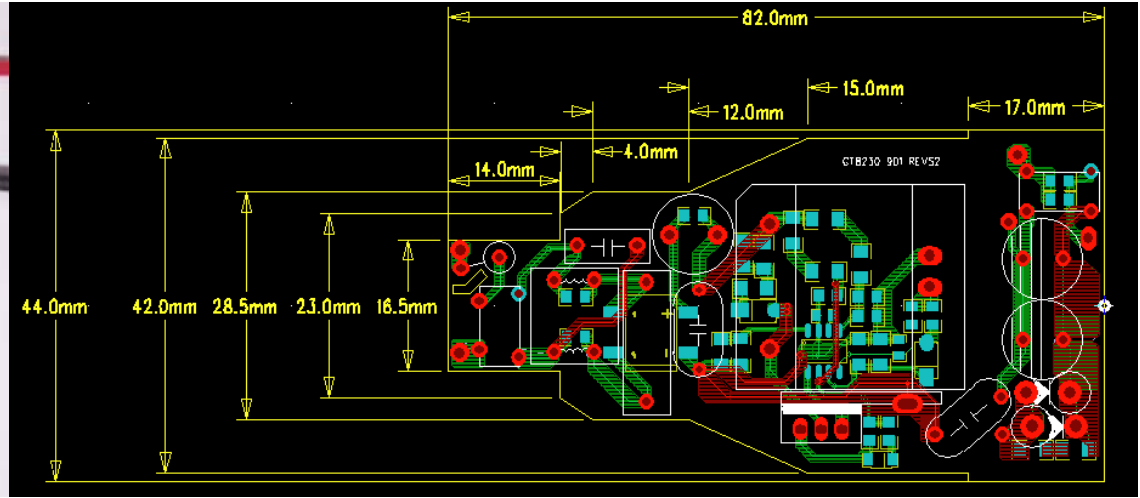
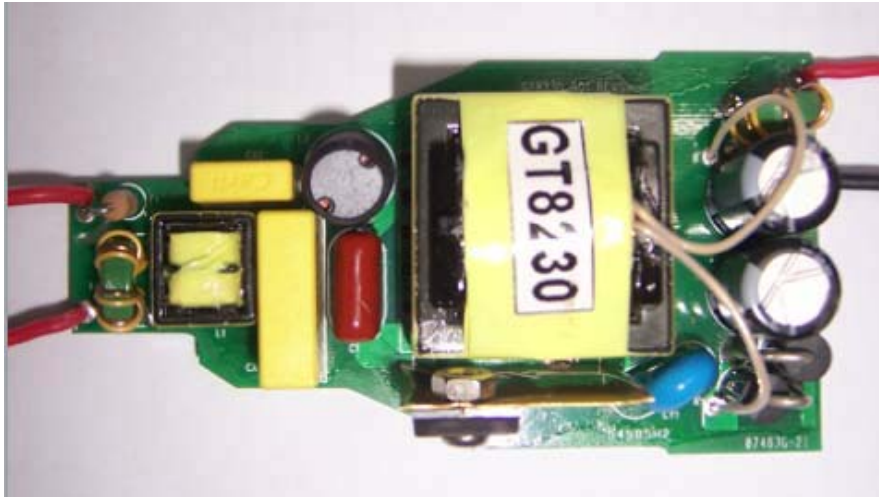


非调光	No-dimmable
输入电压: 100~300V/50~60Hz	Input voltage : 100~300V/ 50~60Hz
输出功率: ≤24W	Output power : ≤24W
输出电压: 20~36V	Output voltage : 20~36V
输出电流: 350mA~650mA +/-%	Output current: 350~650mA +/-5%
转换效率: ≥85%	Efficiency : ≥85%
功率因数: >0.9	Power factor : >0.9
电流谐波: <15%/120Vac ; <25%/230Vac	THD :<15%/120Vac; <25%/230Vac
设计规格: 隔离 3kV 耐压, 依据CE 和UL 标准设计	Isolator :Hi-pot >3KV, Design according to CE & UL Standard
最大尺寸: L*W*H(100*31*27) mm	Max size : L*W*H(100*31*27)mm

注: 功率不变的情况下, 可以根据客户的输出电压电流来定制, We can change the output voltage and current according to customer spec.  
主要用以球泡和 Par30/Par38 等



型号 Model: **GT8230**



非调光	No-dimmable
输入电压: 90~264V/50~60Hz	Input voltage : 90~264V/ 50~60Hz
输出功率: ≤24W	Output power : ≤24W
输出电压: 18~24V	Output voltage : 18~14V
输出电流: ≤1000mA +/-5%	Output current: ≤1000mA +/-5%
转换效率: ≥85%	Efficiency : ≥85%
功率因数: >0.9	Power factor : >0.9
电流谐波: <15%/120Vac ; <25%/230Vac	THD :<15%/120Vac;<25%/230Vac
设计规格: 隔离 3kV 耐压, 依据CE 和UL 标准设计	Isolator :Hi-pot >3KV, Design according to CE & UL Standard
最大尺寸: L*W*H(82*44*23)mm	Max size : L*W*H(82*42*23)mm

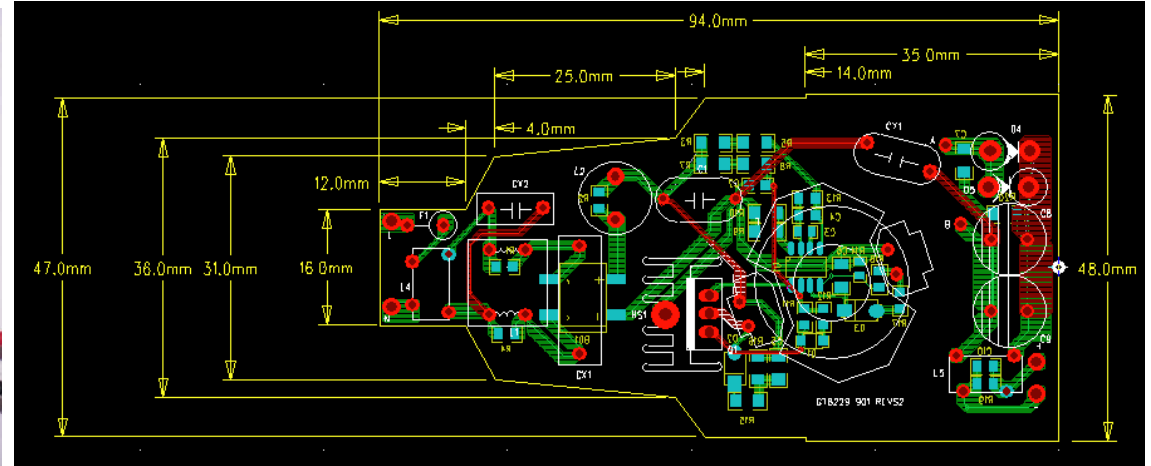
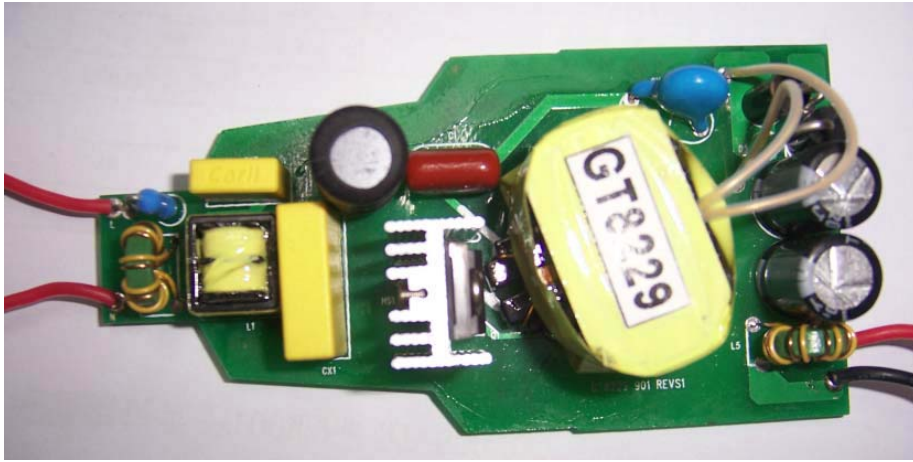
注: 功率不变的情况下, 可以根据客户的输出电压电流来定制, We can change the output voltage and current according to customer spec.

主要用以球泡和 Par30/Par38 等





型号 Model: **GT8229**



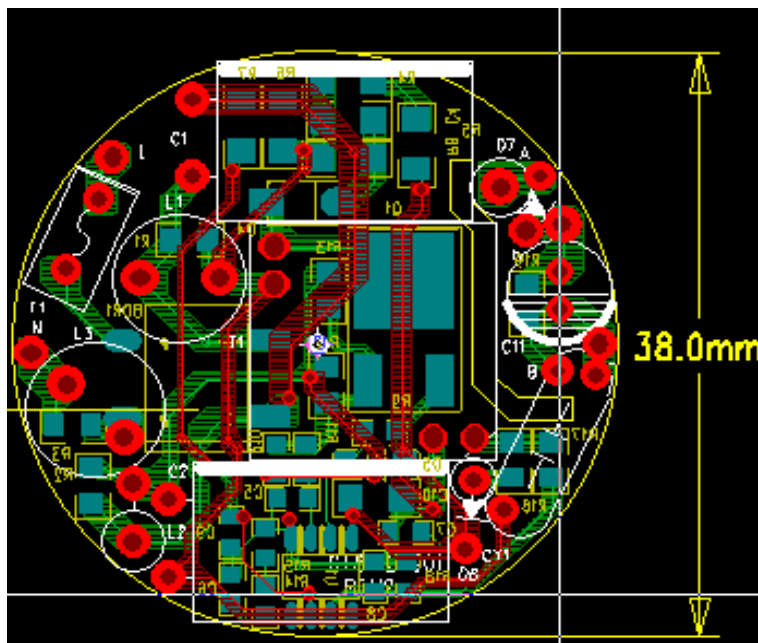
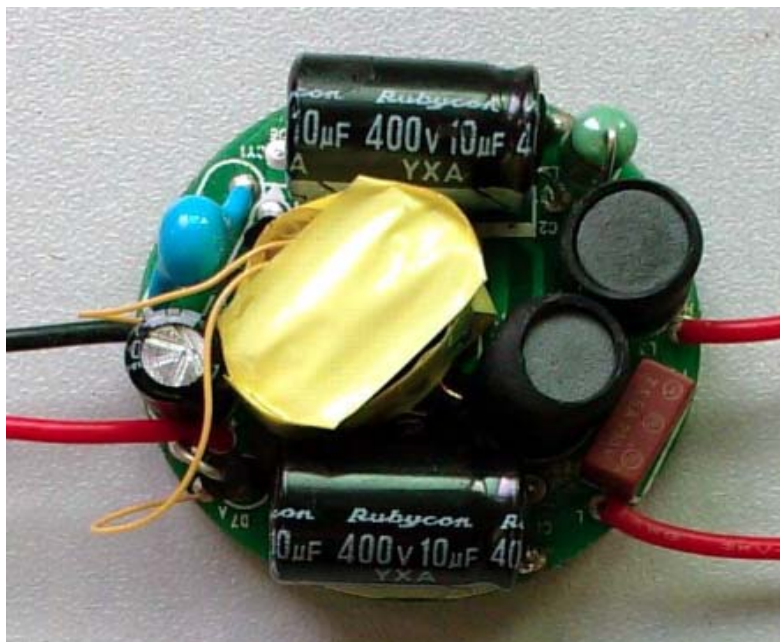
非调光	No-dimmable
输入电压: 90~264V/50~60Hz	Input voltage : 90~264V/ 50~60Hz
输出功率: ≤40W	Output power : ≤40W
输出电压: 27~40V	Output voltage : 27~40V
输出电流: ≤1000mA +/-5%	Output current: ≤1000mA +/-5%
转换效率: ≥85%	Efficiency : ≥85%
功率因数: >0.9	Power factor : >0.9
电流谐波: <15%/120Vac ; <25%/230Vac	THD :<15%/120Vac;<25%/230Vac
设计规格: 隔离 3kV 耐压, 依据CE 和UL 标准设计	Isolator :Hi-pot >3KV, Design according to CE & UL Standard
最大尺寸: L*W*H(85*48*23)mm	Max size : L*W*H(84*48*23)mm

注: 功率不变的情况下, 可以根据客户的输出电压电流来定制, We can change the output voltage and current according to customer spec.

主要用以球泡和 Par30/Par38 等



型号 Model: **GT8172**



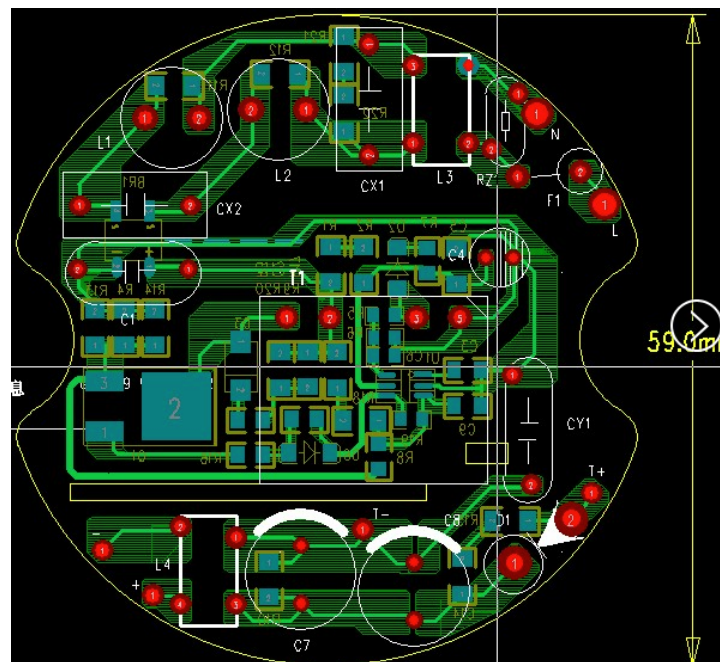
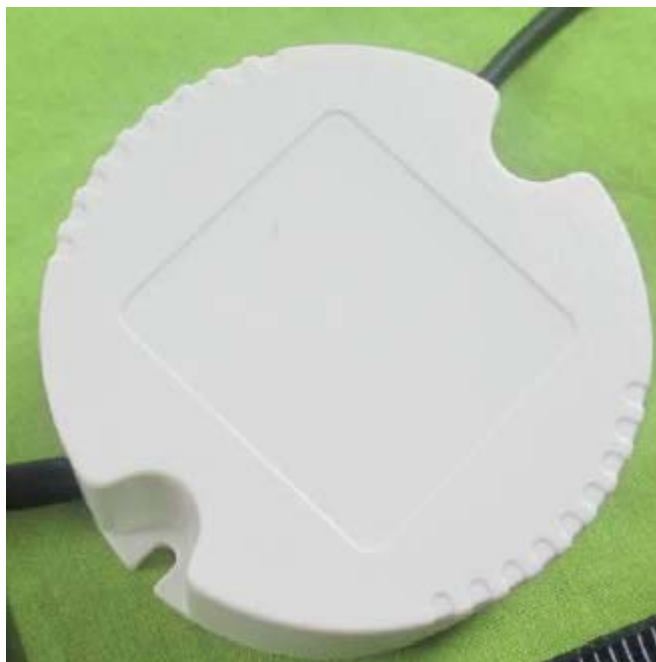
非调光	No-dimmable
输入电压: 90~264V/50~60Hz	Input voltage : 90~264V/ 50~60Hz
输出功率: ≤12W	Output power : ≤12W
输出电压: 20~31V	Output voltage : 20~31V
输出电流: 320mA +/-5%	Output current: 320mA +/-5%
转换效率: ≥80%	Efficiency : ≥80%
功率因数: --	Power factor : --
电流谐波: --	THD :--
设计规格: 隔离 3kV 耐压, 依据CE 和UL 标准设计	Isolator :Hi-pot >3KV, Design according to CE & UL Standard
最大尺寸: Ø*H(38*14)mm	Max size : Ø*H(38*14)mm

注: 功率不变的情况下, 可以根据客户的输出电压电流来定制, We can change the output voltage and current according to customer spec.

主要用以筒灯和吸顶灯等



型号 Model: **GT8269**



**GT8269-1 LED Driver**

INPUT: 100-240Vac 0.2A 50/60HZ  
 OUTPUT: 17-30V  $\equiv$  350mA  
 PF>0.9 Efficiency: >85%  
 ta 40°C tc 70°C SELV

LED +  
 -  
 AC INPUT  
 2  
 2

RoHS  
 CE  
 SELV  
 UL

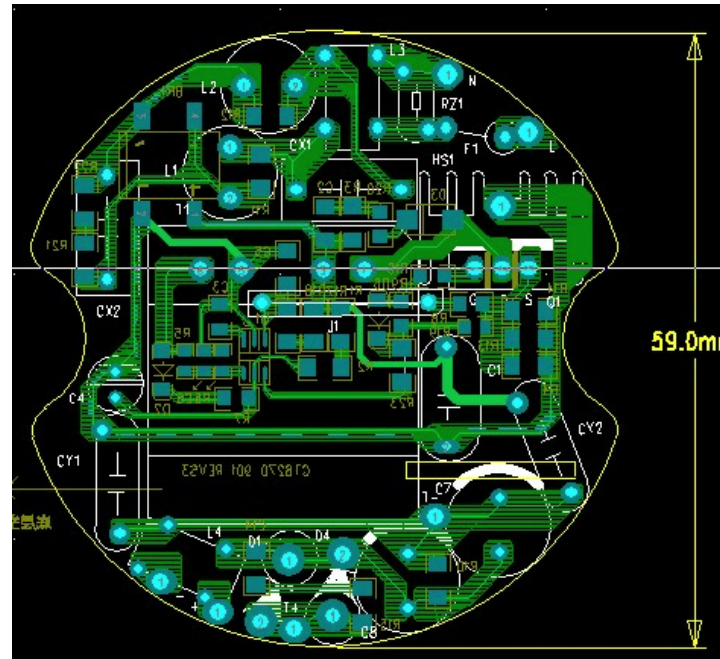
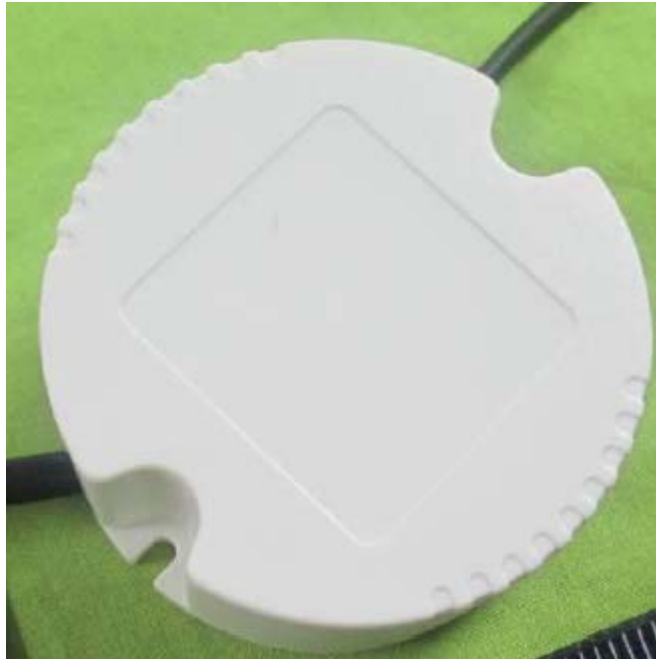
非调光	No-dimmable
输入电压: 90~264V/50~60Hz	Input voltage : 90~264V/ 50~60Hz
输出功率: $\leq$ 12W	Output power : $\leq$ 12W
输出电压: 17~30V	Output voltage : 17~30V
输出电流: 350mA +/-5%	Output current: 350mA +/-5%
转换效率: $\geq$ 85%	Efficiency : $\geq$ 85%
功率因数: >0.9	Power factor : >0.9
电流谐波: <15%/120Vac ; <25%/230Vac	THD :<15%/120Vac; <25%/230Vac
设计规格: 隔离 3.75kV 耐压, 依据CE 和UL 标准设计	Isolator :Hi-pot >3.75KV, Design according to CE & UL Standard
最大尺寸: $\varnothing$ *H(66*30)mm 外壳尺寸	Max size : $\varnothing$ *H(66*30)mm housing

注: 功率不变的情况下, 可以根据客户的输出电压电流来定制, We can change the output voltage and current according to customer spec.

主要用以筒灯和吸顶灯等



型号 Model: **GT8270**



**GT8270-3 LED Driver**  
 INPUT: 100-240Vac 0.2A 50/60HZ  
 OUTPUT: 10-18V --- 700mA  
 PF>0.9 Efficiency: >85%  
 ta 40°C tc 70°C SELV

LED + - AC INPUT 2 2  
 LED OUTPUT CE RoHS

**GT8270-5 LED Driver**  
 INPUT: 100-240Vac 0.2A 50/60HZ  
 OUTPUT: 25-40V --- 450mA  
 PF>0.9 Efficiency: >85%  
 ta 40°C tc 70°C SELV

LED + - AC INPUT 2 2  
 LED OUTPUT CE RoHS

**GT8270-1 LED Driver**  
 INPUT: 100-240Vac 0.2A 50/60HZ  
 OUTPUT: 18-30V --- 510mA  
 PF>0.9 Efficiency: >85%  
 ta 40°C tc 70°C SELV

LED + - AC INPUT 2 2  
 LED OUTPUT CE RoHS

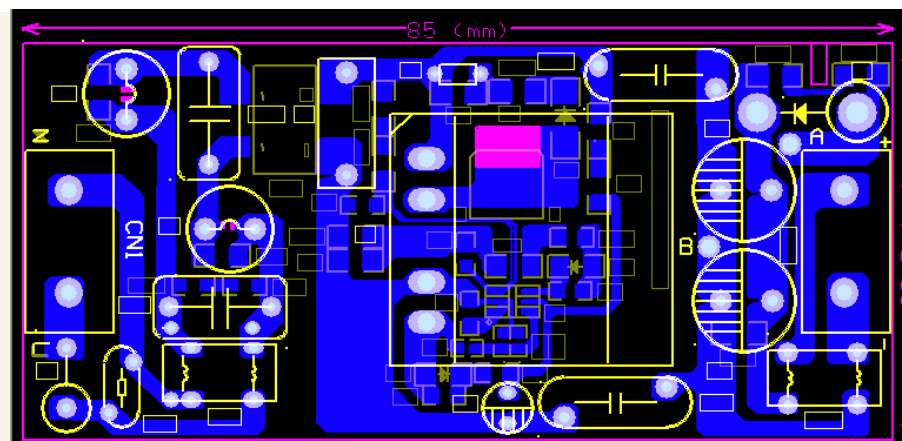
非调光	No-dimmable
输入电压: 90~264V/50~60Hz	Input voltage : 90~264V/ 50~60Hz
输出功率: ≤20W	Output power : ≤20W
输出电压: 10-18V; 25-50V; 18-30V	Output voltage : 10-18V; 25-50V; 18-30V
输出电流: 700mA ; 450mA ; 510mA; +/-5%	Output current: 700mA ; 450mA ; 510mA; +/-5%
转换效率: ≥85%	Efficiency : ≥85%
功率因数: >0.9	Power factor : >0.9
电流谐波: <15%/120Vac ; <25%/230Vac	THD :<15%/120Vac; <25%/230Vac
设计规格: 隔离 3.75kV 耐压, 依据CE 和UL 标准设计	Isolator :Hi-pot >3.75KV, Design according to CE & UL Standard
最大尺寸: Ø*H(66*30)mm 外壳尺寸	Max size : Ø*H(66*30)mm housing

注: 功率不变的情况下, 可以根据客户的输出电压电流来定制, We can change the output voltage and current according to customer spec.

主要用以筒灯和吸顶灯等



型号 **Model:** **GT8264**

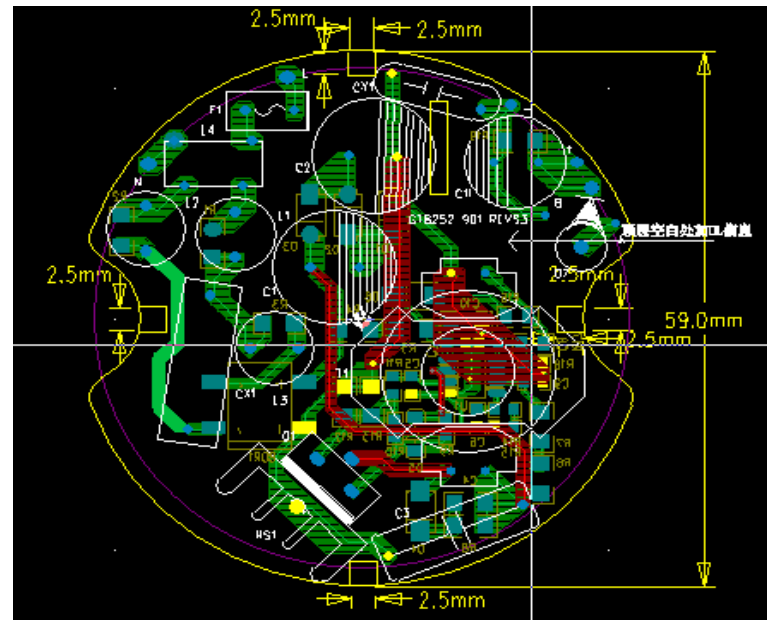


非调光	No-dimmable
输入电压: 90~264V/50~60Hz	Input voltage : 90~264V/ 50~60Hz
输出功率: ≤15W	Output power : ≤15W
输出电压: 22~42V	Output voltage : 22~42V
输出电流: 350mA +/-5%	Output current: 350mA +/-5%
转换效率: ≥85%	Efficiency : ≥85%
功率因数: >0.9	Power factor : >0.9
电流谐波: <15%/120Vac ; <25%/230Vac	THD :<15%/120Vac; <25%/230Vac
设计规格: 隔离 3.75kV 耐压, 依据CE 和UL 标准设计	Isolator :Hi-pot >3.75KV, Design according to CE & UL Standard
最大尺寸: L*W*H(115*44*28)mm 外壳尺寸	Max size : L*W*H(115*44*28)mm housing

注: 功率不变的情况下, 可以根据客户的输出电压电流来定制, We can change the output voltage and current according to customer spec.  
主要用以筒灯和吸顶灯等



型号 Model: **GT8252**



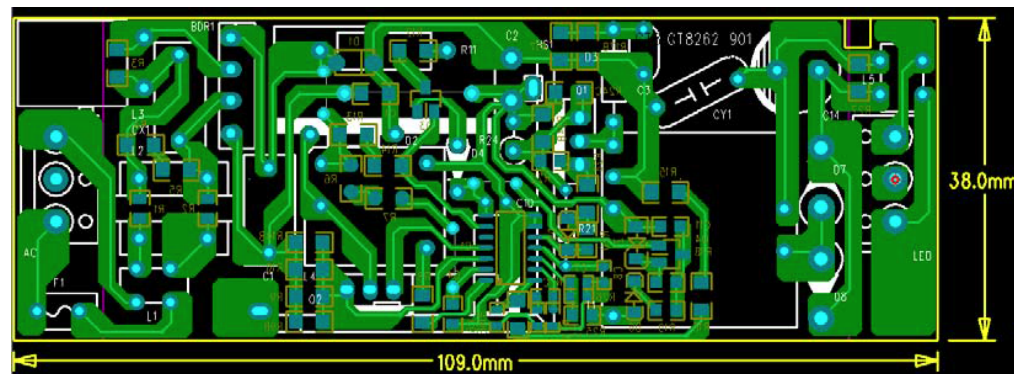
非调光	No-dimmable
输入电压: 90~264V/50~60Hz	Input voltage : 90~264V/ 50~60Hz
输出功率: ≤22W	Output power : ≤22W
输出电压: 30~39V	Output voltage : 30~39V
输出电流: 550mA +/-5%	Output current: 550mA +/-5%
转换效率: ≥85%	Efficiency : ≥85%
功率因数: >0.83	Power factor : >0.83
电流谐波: --	THD :--
设计规格: 隔离 3.75kV 耐压, 依据CE 和UL 标准设计	Isolator :Hi-pot >3.75KV, Design according to CE & UL Standard
最大尺寸: Ø*H(59*26)mm	Max size : Ø*H(59*26)mm

注: 功率不变的情况下, 可以根据客户的输出电压电流来定制, We can change the output voltage and current according to customer spec.

主要用以筒灯和吸顶灯等



型号 Model: **GT8262**



非调光	No-dimmable
输入电压: 90~264V/50~60Hz	Input voltage : 90~264V/ 50~60Hz
输出功率: ≤28W	Output power : ≤28W
输出电压: 30~40V	Output voltage : 30~40V
输出电流: 700mA +/-5%	Output current: 7000mA +/-5%
转换效率: ≥85%	Efficiency : ≥85%
功率因数: >0.98	Power factor : >0.98
电流谐波: <10%	THD :<10%
设计规格: 隔离 3.75kV 耐压, 依据CE 和UL 标准设计	Isolator :Hi-pot >3.75KV, Design according to CE & UL Standard
最大尺寸: L*W*H(140*45*28)mm 外壳尺寸	Max size : L*W*H(140*45*28)mm housing

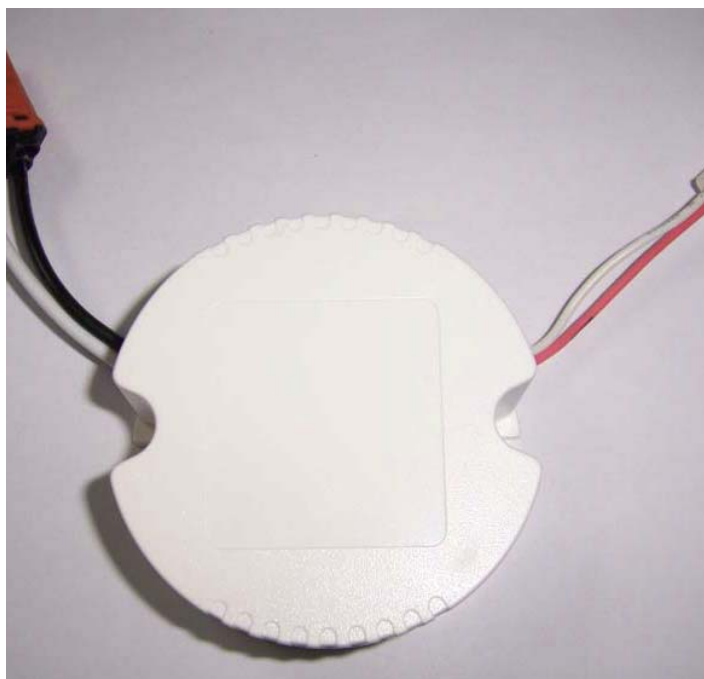
两极 PF, 电流纹波小无任何频闪

注: 功率不变的情况下, 可以根据客户的输出电压电流来定制, We can change the output voltage and current according to customer spec.

主要用以筒灯和吸顶灯等



型号 Model: **GT8346**



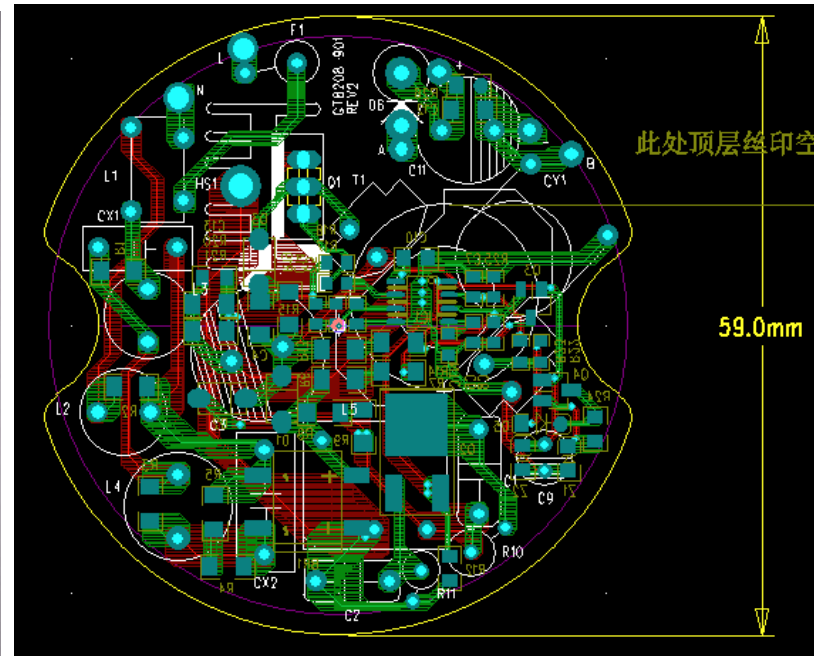
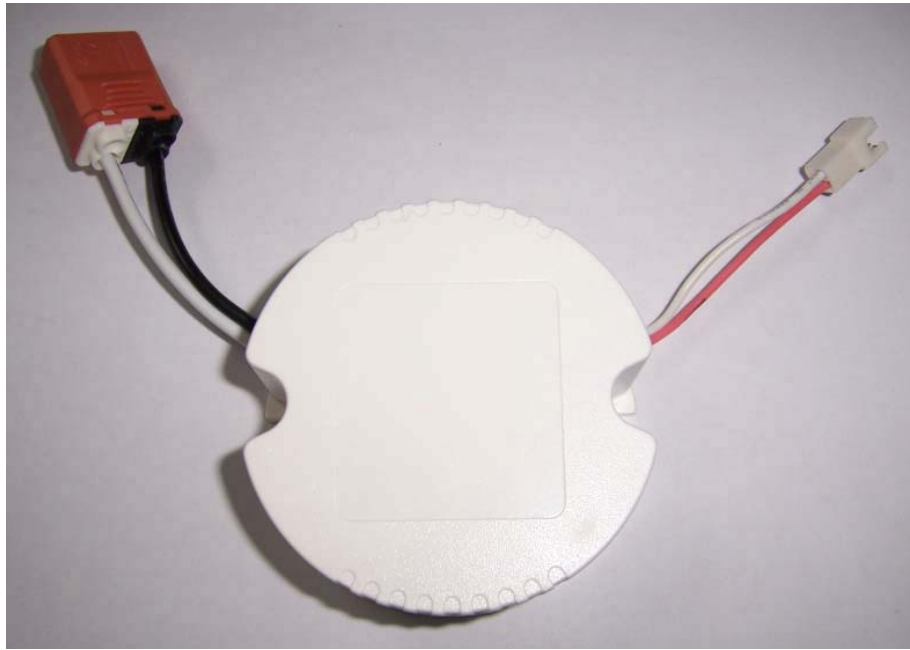
可控硅调光1~100% 无闪烁	Work with leading edge and trailing edge dimmer
输入电压: 90~135V/60Hz	Input voltage : 90~135Vac/60Hz
输出功率: ≤20W	Output power : ≤20W
输出电压: 28~32V	Output voltage : 28~32V
输出电流: 680mA +/-5%	Output current: 680mA +/-5%
转换效率: ≥85%	Efficiency : ≥85%
功率因数: >0.9	Power factor : >0.9
低纹波: 电流纹波<15%	Output ripple :current ripple<15%
设计规格: 隔离 3kV 耐压, 依据UL 标准设计	Isolator :Hi-pot >3KV, Design according to UL Standard
最大尺寸: Ø*H(66*30)mm 外壳尺寸	Max size : Ø*H(66*30)mm Housing

注: 功率不变的情况下, 可以根据客户的输出电压电流来定制, We can change the output voltage and current according to customer spec.  
主要用以筒灯和吸顶灯等





型号 Model: **GT8208**



可控硅调光1~100% 无闪烁	Work with leading edge and trailing edge dimmer
输入电压: 90~135V/60Hz	Input voltage : 90~135Vac/60Hz
输出功率: ≤15W	Output power : ≤15W
输出电压: 36~39V	Output voltage : 36~39V
输出电流: 300mA +/-5%	Output current: 300mA +/-5%
转换效率: ≥81%	Efficiency : ≥81%
功率因数: >0.8	Power factor : >0.8
低纹波: 电流纹波<15%	Output ripple :current ripple<15%
设计规格: 隔离 3kV 耐压, 依据UL 标准设计	Isolator :Hi-pot >3KV, Design according to UL Standard
最大尺寸: $\phi$ *H(66*30)mm 外壳尺寸	Max size : $\phi$ *H(66*30)mm Housing

两极 PF, 电流纹波小无任何频闪

注: 功率不变的情况下, 可以根据客户的输出电压电流来定制, We can change the output voltage and current according to customer spec.

主要用以筒灯和吸顶灯等



型号 Model: **GT8352**

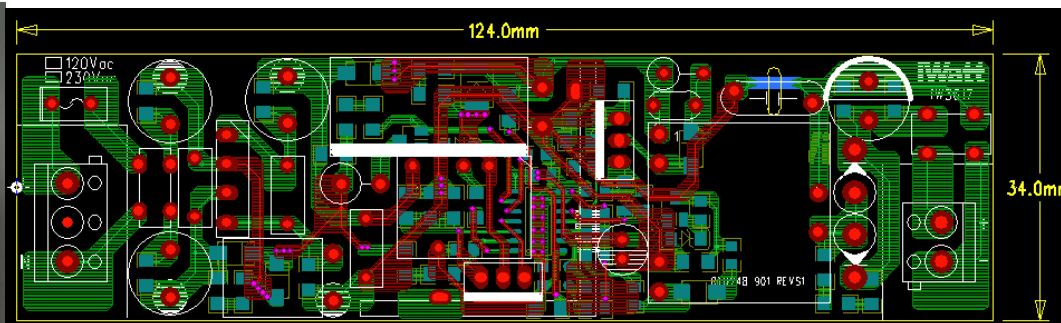


可控硅调光1~100% 无闪烁	Work with leading edge and trailing edge dimmer
输入电压: 180~264V/60Hz	Input voltage : 180~264Vac/60Hz
输出功率: ≤25W	Output power : ≤25W
输出电压: 30~36V	Output voltage : 30~36V
输出电流: 700mA +/-5%	Output current: 700mA +/-5%
转换效率: ≥86%	Efficiency : ≥86%
功率因数: >0.95	Power factor : >0.95
低纹波: 电流纹波<15%	Output ripple :current ripple<15%
设计规格: 隔离 3kV 耐压, 依据UL 标准设计	Isolator :Hi-pot >3KV, Design according to UL Standard
最大尺寸: : L*W*H(115*44*28)mm 外壳尺寸	Max size : L*W*H(115*44*28)mm Housing

注: 功率不变的情况下, 可以根据客户的输出电压电流来定制, We can change the output voltage and current according to customer spec.  
主要用以筒灯和吸顶灯等



型号 Model: **GT8248**



可控硅调光1~100% 无闪烁	Work with leading edge and trailing edge dimmer
输入电压: 90~135V/60Hz 或185~264V/50Hz	Input voltage : 90~135Vac/60Hz or 185~264V/ 50Hz
输出功率: ≤28W	Output power : ≤28W
输出电压: 30~40V	Output voltage : 30~40V
输出电流: 700mA +/-5%	Output current: 700mA +/-5%
转换效率: ≥85%	Efficiency : ≥85%
功率因数: >0.98	Power factor : >0.98
电流谐波: <10%	THD :<10%
计规格: 隔离 3kV 耐压, 依据CE 和UL 标准设计	设Isolator :Hi-pot >3KV, Design according to CE & UL Standard
最大尺寸: L*W*H(150*40*28)mm	Max size : L*W*H(150*40*28)mm

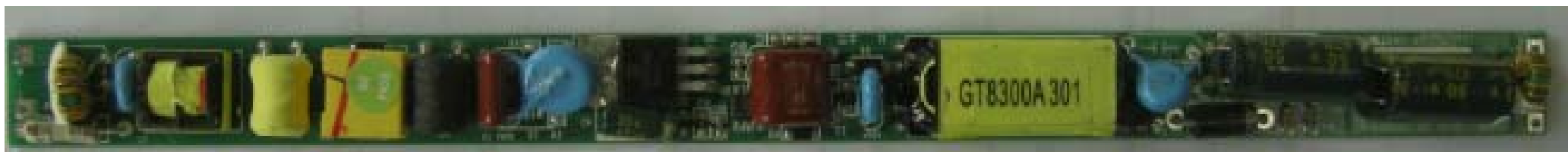
两极 PF, 电流纹波小无任何频闪

注: 功率不变的情况下, 可以根据客户的输出电压电流来定制, We can change the output voltage and current according to customer spec.

主要用以筒灯,吸顶灯,隔栅灯和面板灯等



型号 **Model:** **GT8300A**



非调光	No-dimmable
输入电压: 100~277V/50~60Hz	Input voltage : 100~277V/ 50~60Hz
输出功率: ≤16W	Output power : ≤16W
输出电压: 30~40V	Output voltage : 30~40V
输出电流: 390mA +/-5%	Output current: 390mA +/-5%
转换效率: ≥85%	Efficiency : ≥85%
功率因数: >0.9	Power factor : >0.9
电流谐波: <15%/120Vac ; <25%/230Vac	THD :<15%/120Vac; <25%/230Vac
设计规格: 隔离 3.75kV 耐压, 依据CE 和UL 标准设计	Isolator :Hi-pot >3.75KV, Design according to CE & UL Standard
最大尺寸: L*W*H(200*17*11.5)mm	Max size : L*W*H(200*17*11.5)mm

注: 功率不变的情况下, 可以根据客户的输出电压电流来定制, We can change the output voltage and current according to customer spec.  
主要用以 T8 /T5 灯管等