

DRV8412EVM Motor Drive Evaluation Board

The DRV8412 customer evaluation module demonstrates the operation and performance of the DRV8412 device from Texas Instruments. The EVM can be used with a MCU controller module or can be wired into an existing system.

Contents

1	Introduction	2
2	Operation	4
3	Schematics, PCB Layers, and Bill of Materials	6

List of Figures

1	The TI DRV8412EVM Motor Drive Evaluation Board – Top View	3
2	The TI DRV8412EVM Motor Drive Evaluation Board – Bottom View	3
3	DRV8412EVM Schematic	6
4	DRV8412EVM – Top Layer Composite	7
5	DRV8412EVM – Top Layer Copper	7
6	DRV8412EVM – Bottom Copper	8

List of Tables

1	Key Parameters	2
2	Power Supply Requirements	4
3	Mode Pin Configurations	5
4	Bill of Materials	8

1 Introduction

1.1 Description

The DRV8412 is a dual full bridge PWM motor driver. It has a maximum recommended supply voltage of 50V with an absolute maximum of 70V. The DRV8412 is capable of delivering 2x3A continuous output current and 2x6A peak current per device. The DRV8412 has an advanced protection system consisting of short-circuit protection, overcurrent protection, undervoltage protection, and two-stage thermal protection.

The DRV8412EVM can be operated with either two full bridge outputs or 4 half bridge outputs. It can also be used in parallel mode to double the current capability. The unit can be operated with external PWM inputs using a MCU controller module or signal generator, etc. The outputs and power supplies can be connected using stripped wires by connecting them to the on-board terminal blocks. The EVM module also has hardware switches to control the modes and to allow a manual reset.

1.2 DRV8412EVM Features

- PWM input motor driver module
- Self-contained protection system (short-circuit and thermal)
- Double-side, plated-through PCB layout

1.3 DRV8412EVM Specifications

Table 1. Key Parameters

Output Stage Voltage	0 to 50 Volts
System Supply Voltage	12 Volts
Number of Output	4 × Half Bridge, 2 × Full Bridge
Output Current per Output Pin	Up to 6A peak, 3 A continuous

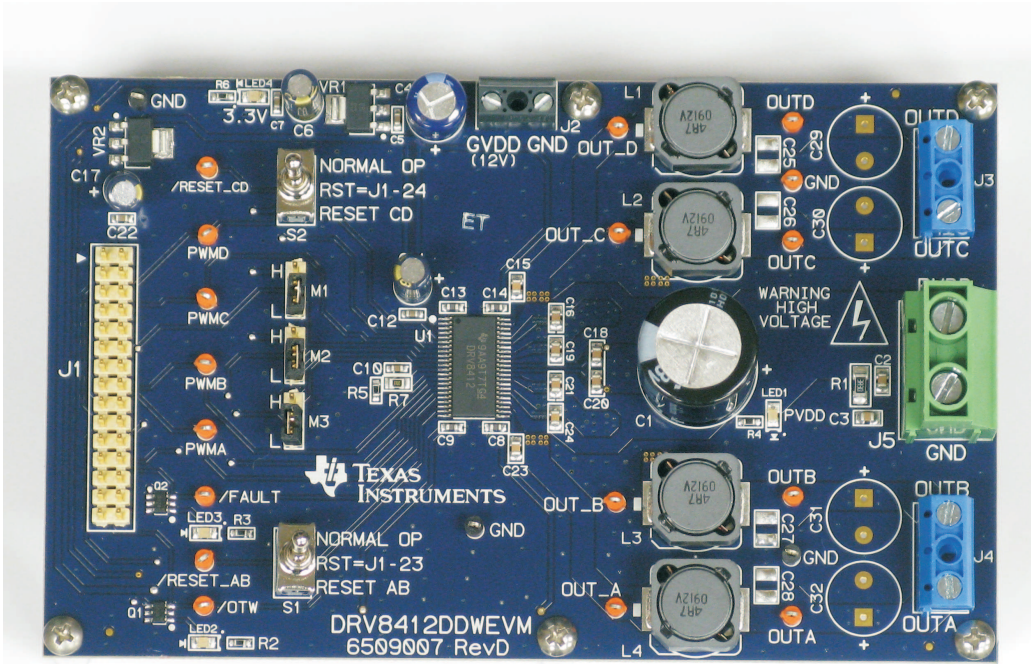


Figure 1. The TI DRV8412EVM Motor Drive Evaluation Board – Top View

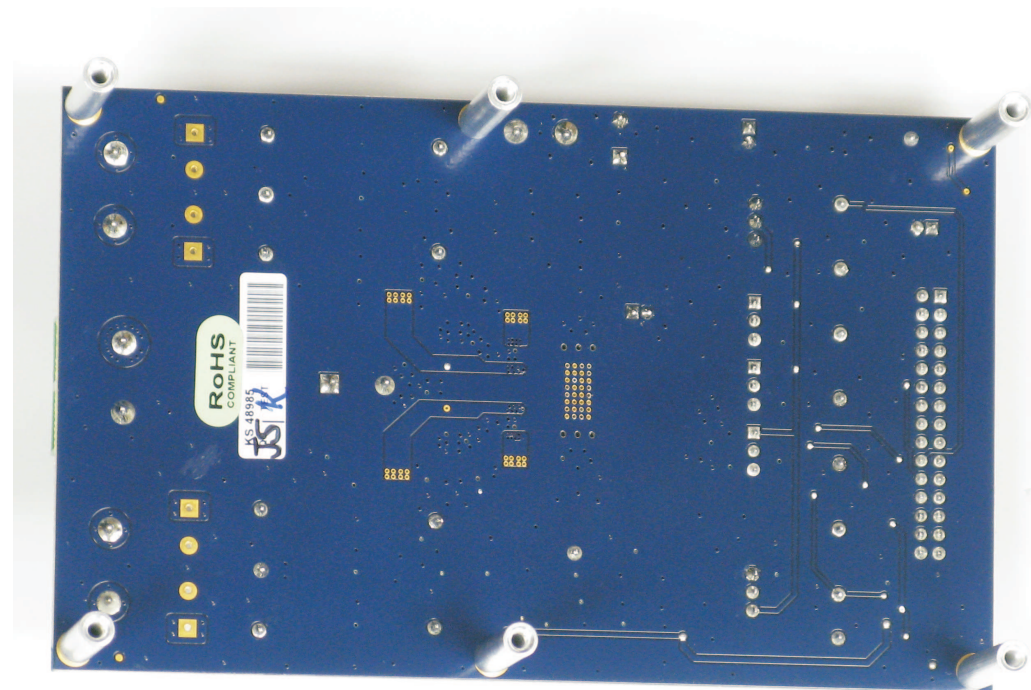


Figure 2. The TI DRV8412EVM Motor Drive Evaluation Board – Bottom View

2 Operation

2.1 Quick Start List for Stand-Alone Operation

Follow these steps to use the DRV8412EVM stand-alone or when connecting it into existing circuits or equipment. Connections to the EVM module can be made by inserting stripped wire for the power supplies and output connections.

2.1.1 Power Supply

Two power supplies are required to power up the EVM. One is needed for system power, logic and gate drive, while the second is for the output stage power supply. Please use enough wire gauge such that the impedance is relatively low. The output stage supply should use at least AWG 22 wire.

Table 2. Power Supply Requirements

Description	Voltage Range	Current Requirements	Wire Size
System Power Supply	12 V	1 A	26 AWG
Output Stage Power Supply	0 – 50 V	6 A	22 AWG

2.1.2 Evaluation Module Preparation

Inputs and Outputs

1. Ensure that all external power sources are set to OFF.
2. Connect load(s) across the outputs (OUTX) or between the outputs and ground depending on the configuration requirement.
3. Connect an external 12V power supply to the terminal block marked GVDD and GND (J2). Make sure the wires are connected with correct polarities.
4. Connect an external regulated power supply adjustable from 0V - 50V to the terminal block marked PVDD and GND (J5). Make sure the wires are connected with correct polarities.

Control Signals

1. Install the mode jumpers on M3, M2, and M1 depending on the mode desired. See "Mode Pin Configurations" table for detail.
2. Set RESET_AB (S1) and RESET_CD (S2) switches to low (RESET) position.
3. Prepare the PWM signals needed to control the power stage and make sure that PWM logic is 3.3V not 5V.

2.1.3 Power Up

The DRV8412 device doesn't require a special power up sequence, but the following sequence is recommended for the EVM.

1. Turn on GVDD (12V) power supply.
2. Enable PWM signals.
3. Set RESET_AB (S1) and RESET_CD (S2) switches to high (NORMAL OPERATION) position.
4. Turn on the external PVDD power supply to the desired voltage gradually.
5. Adjust the duty cycle of PWM input signals to the desired value. The EVM should begin to operate normally.

2.1.4 Fault Conditions

When device shuts down due to any fault conditions, flip RESET_AB and/or RESET_CD switches back and forth to clear the fault and reset the device. If this doesn't work for any reason, turn 12V GVDD power supply off and on again to clear the latch. Please inspect the board and test condition carefully to understand the problem before next operation.

Table 3. Mode Pin Configurations

MODE PINS			OUTPUT CONFIGURATION	DESCRIPTION
M3	M2	M1		
0	0	0	2 FB or 4 HB	Dual Full Bridges (two PWM inputs each full bridge) or four half bridges with cycle-by-cycle current limit
0	0	1	2 FB or 4 HB	Dual full bridges (two PWM inputs each full bridge) or four half bridges with OC latching shutdown (no cycle-by-cycle current limit)
0	1	0	1 PFB	Parallel full bridge with cycle-by-cycle current limit
0	1	1	1 FB	Dual Full Bridges (one PWM input each full bridge with complementary PWM on second half bridge) with cycle-by-cycle current limit
1	x	x		Reserved

3 Schematics, PCB Layers, and Bill of Materials

3.1 DRV8412EVM Schematic

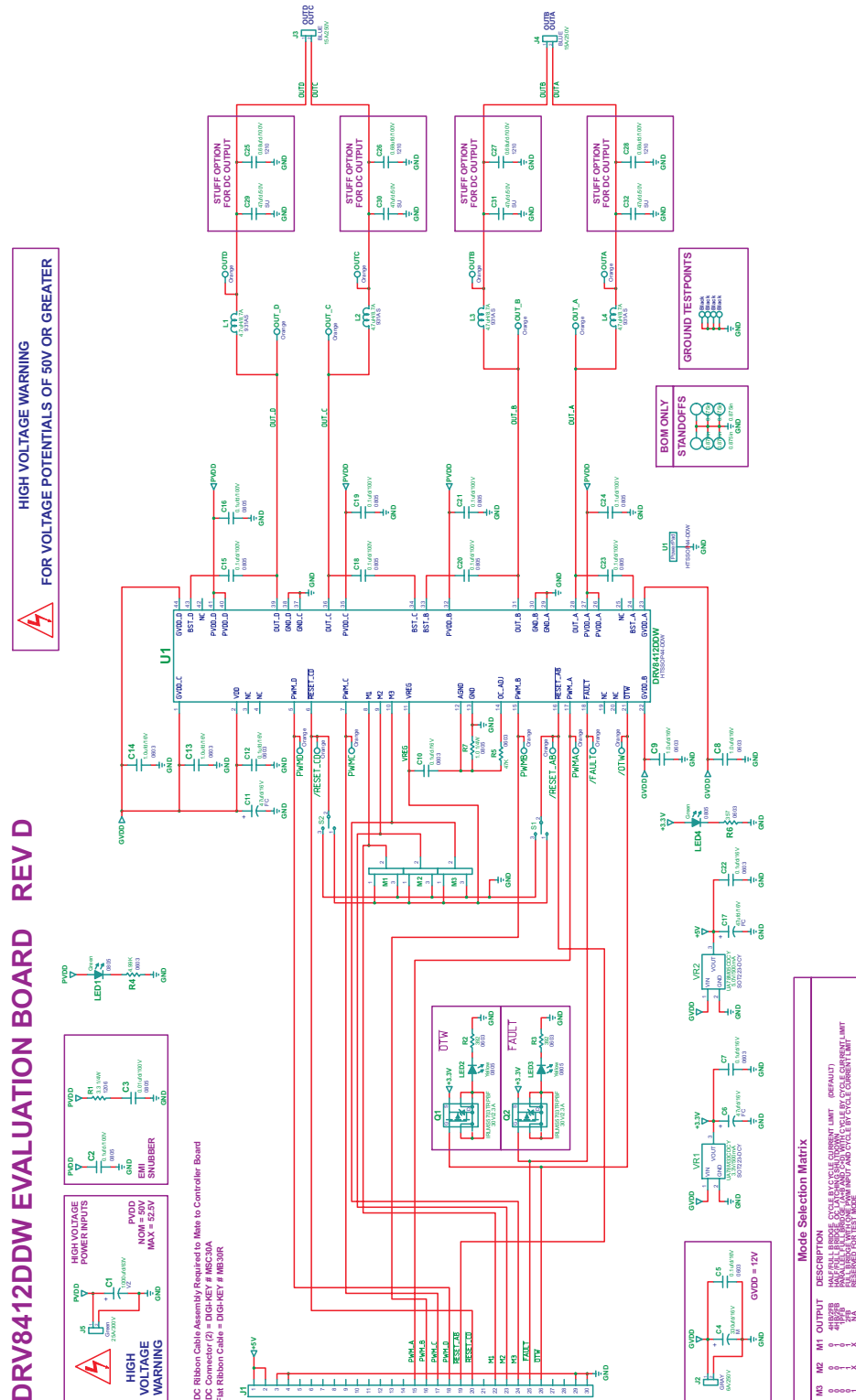


Figure 3. DRV8412EVM Schematic

3.2 DRV8412EVM PCB Layers

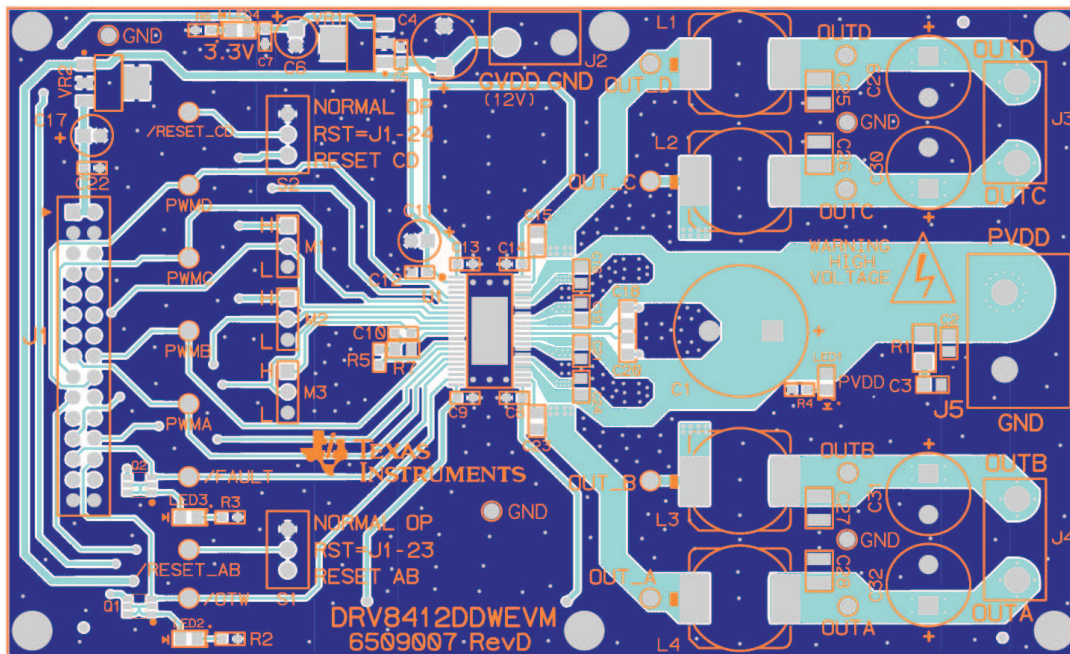


Figure 4. DRV8412EVM – Top Layer Composite

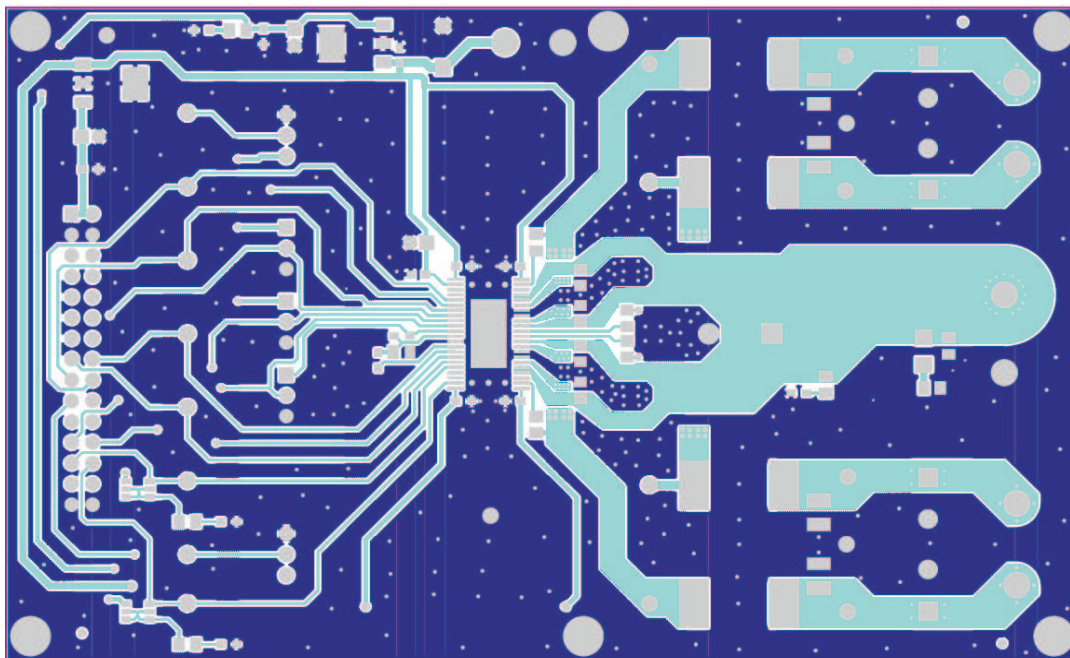


Figure 5. DRV8412EVM – Top Layer Copper

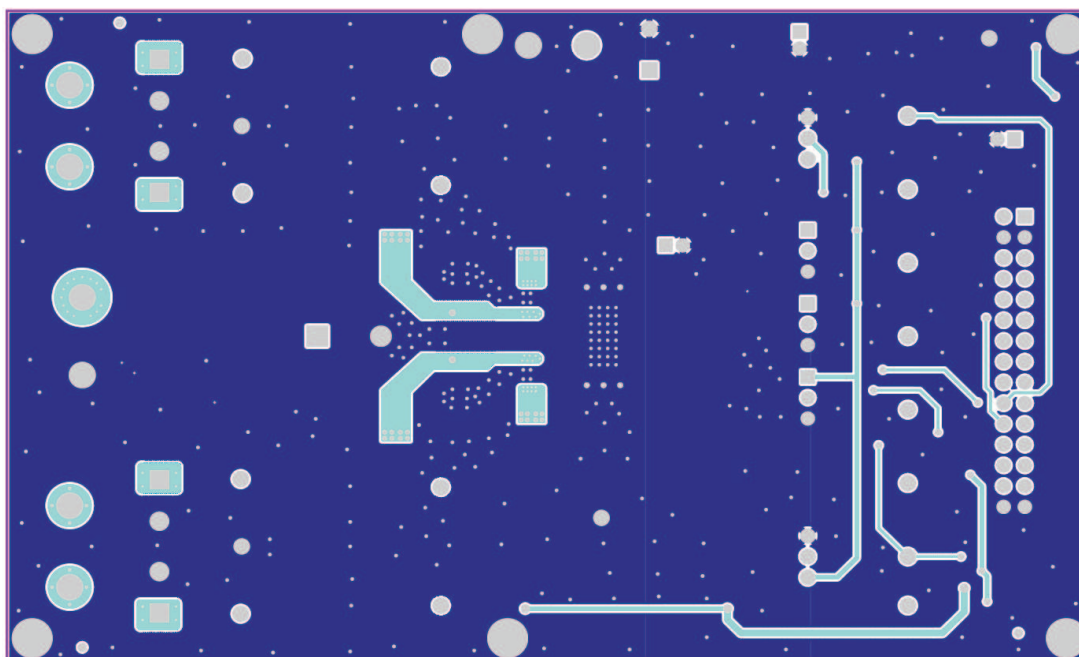


Figure 6. DRV8412EVM – Bottom Copper

3.3 Bill of Materials for DRV8402DKD_EVM

Table 4. Bill of Materials

QTY	REF DES	Description	Vendor	Vendor Part No.	MANU	MANU Part No.
1	U1	MOTOR DRIVE POWER AMP HTSSOP44-DDW ROHS	Texas Instruments	DRV8412DDW	Texas Instruments	DRV8412DDW
1	VR1	VOLT REG 3.3V 500mA SOT223-DCY ROHS	Digi-Key	296-13424-1	Texas Instruments	UA78M33CDCYR
2	VR2	VOLT REG 5.0V 500mA SOT223-DCY ROHS	Digi-Key	296-12290-1	Texas Instruments	UA78M05CDCYR
2	Q1, Q2	MOSFET, P-Chan 30V 2.3A, SOT23-DBV6 ROHS	Digi-Key	IRLMS5703PBFCT	International Rectifier	IRLMS5703TRPBF
2	LED1, LED4	LED, GREEN 2.0V SMD0805 ROHS	Digi-Key	67-1553-1	Lumex Opto	SML-LXT0805GW-TR
2	LED2, LED3	LED, YELLOW 2.0V SMD0805 ROHS	Digi-Key	67-1554-1	Lumex Opto	SML-LXT0805YW-TR
1	C3	CAP SMD0805 CERM 0.01UFD 100V 10% X7R ROHS	Digi-Key	PCC1991CT	Panasonic	ECJ-2VB2A103K
5	C5, C7, C10, C12, C22	CAP SMD0603 CERM 0.1UFD 16V 10% X7R ROHS	Digi-Key	PCC1762CT	Panasonic	ECJ-1VB1C104K
9	C2, C15, C16, C18, C19, C20, C21, C23, C24	CAP SMD0805 CERM 0.1UFD 100V 10% X7R ROHS	Digi-Key	445-1418-1	TDK	C2012X7R2A104K
4	C8, C9, C13, C14	CAP SMD0603 CERM 1.0UFD 16V 10% X5R ROHS	Digi-Key	PCC2224CT	Panasonic	ECJ-1VB1C105K
3	C6, C11, C17	CAP 47UFD 16V RAD ALUM ELEC FC ROHS	Digi-Key	P11196	Panasonic	EEU-FC1C470
1	C4	CAP 330UFD 16V RAD ALUM ELEC M 20% ROHS	Digi-Key	P10371TB	Panasonic	ECA-1CM331B
1	C1	CAP 1000UFD 63V RAD ALUM ELEC VZ ROHS	Digi-Key	493-1359	Nichicon	UVZ1J102MHD
1	R7	RESISTOR SMD0805 1.0 OHM 1/4W 1% ROHS	Digi-Key	RHM1KCT	ROHM	ESR10EZPJ1R0
1	R1	RESISTOR SMD1206 3.3 OHM 1/8W 5% ROHS	Digi-Key	P3.3PCT	Panasonic	ERJ-8RQJ3R3V

Table 4. Bill of Materials (continued)

QTY	REF DES	Description	Vendor	Vendor Part No.	MANU	MANU Part No.
1	R6	RESISTOR SMD0603 357 OHM 1% THICK FILM 1/10W ROHS	Digi-Key	P357HCT	Panasonic	ERJ-3EKF3570V
2	R2, R3	RESISTOR SMD0603 392 OHM 1% THICK FILM 1/10W ROHS	Digi-Key	P392HCT	Panasonic	ERJ-3EKF3920V
1	R4	RESISTOR SMD0603 4.99K OHM 1% THICK FILM 1/10W ROHS	Digi-Key	P4.99KHCT	Panasonic	ERJ-3EKF4991V
1	R5	RESISTOR SMD0603 47K OHMS 5% 1/10W ROHS	Digi-Key	P47KGCT	Panasonic	ERJ-3GEYJ473V
4	L1, L2, L3, L4	INDUCTOR SMD 4.7UH 8.7A TYPE D128C ROHS	TOKO	931AS-4R7M	TOKO	931AS-4R7M
3	M1, M2, M3	HEADER THRU MALE 3 PIN 100LS GOLD ROHS	Digi-Key	S1011E-03-ND	Sullins	PBC03SAAN
1	J1	HEADER THRU MALE 2X15 100LS GOLD ROHS	Digi-Key	S2011E-15	Sullins	PBC15DAAN
1	J5	TERMINAL BLOCK 2PIN 25A/300V GREEN 9.52mm PITCH 12-24AWG ROHS	Digi-Key	ED2677	On Shore Technology	OSTT7022150
1	J2	TERMINAL BLOCK 2PIN 6A/250V GRAY 7mm PITCH 16-28AWG ROHS	Digi-Key	ED1534	On Shore Technology	ED655/2DS ED600/2DS
2	J3, J4	TERMINAL BLOCK 2PIN 15A/250V BLUE 10mm PITCH 14-22AWG ROHS	Digi-Key	ED1627	On Shore Technology	
2	S1,S2	Switch,SPST Vert-PCB on-off-on miniature toggle ROHS	Digi-Key	563-1159	Copal Electronics	ATE1E-2M3-10-Z
16	OTW, FAULT PWMA, PWMB, PWMC, PWMD, OUTA, OUT_A, OUTB, OUT_B, OUTC, OUT_C, OUTD, OUT_D, RESET_AB, RESET_CD	PC testpoint, orange, ROHS	Digi-Key	5003K	Keystone Electronics	5003
4	GNDx4	PC TESTPOINT, BLACK, ROHS	Digi-Key	5001	Keystone Electronics	5001K
2	S1, S2	SWITCH,SPST VERT-PCB ON-OFF-ON MINIATURE TOGGLE ROHS	Digi-Key	ATE1E-2M3-10-Z	Copal Electronics	563-1159
3	M1(2-3), M2(2-3), M3(2-3)	SHUNT, BLACK AU FLASH 0.100LS	Digi-Key	S9001	Sullins	SPC02SYAN
6	N/A	4-40 SCREW, STEEL 0.250 IN	Digi-Key	H342	Building Fasteners	PMS 440 0025 PH
6	N/A	STANDOFF,4-40,1.0INx1/4IN,ALUM RND F-F	Digi-Key	2031K	Keystone Electronics	2031

IMPORTANT NOTICE

Texas Instruments Incorporated and its subsidiaries (TI) reserve the right to make corrections, modifications, enhancements, improvements, and other changes to its products and services at any time and to discontinue any product or service without notice. Customers should obtain the latest relevant information before placing orders and should verify that such information is current and complete. All products are sold subject to TI's terms and conditions of sale supplied at the time of order acknowledgment.

TI warrants performance of its hardware products to the specifications applicable at the time of sale in accordance with TI's standard warranty. Testing and other quality control techniques are used to the extent TI deems necessary to support this warranty. Except where mandated by government requirements, testing of all parameters of each product is not necessarily performed.

TI assumes no liability for applications assistance or customer product design. Customers are responsible for their products and applications using TI components. To minimize the risks associated with customer products and applications, customers should provide adequate design and operating safeguards.

TI does not warrant or represent that any license, either express or implied, is granted under any TI patent right, copyright, mask work right, or other TI intellectual property right relating to any combination, machine, or process in which TI products or services are used. Information published by TI regarding third-party products or services does not constitute a license from TI to use such products or services or a warranty or endorsement thereof. Use of such information may require a license from a third party under the patents or other intellectual property of the third party, or a license from TI under the patents or other intellectual property of TI.

Reproduction of TI information in TI data books or data sheets is permissible only if reproduction is without alteration and is accompanied by all associated warranties, conditions, limitations, and notices. Reproduction of this information with alteration is an unfair and deceptive business practice. TI is not responsible or liable for such altered documentation. Information of third parties may be subject to additional restrictions.

Resale of TI products or services with statements different from or beyond the parameters stated by TI for that product or service voids all express and any implied warranties for the associated TI product or service and is an unfair and deceptive business practice. TI is not responsible or liable for any such statements.

TI products are not authorized for use in safety-critical applications (such as life support) where a failure of the TI product would reasonably be expected to cause severe personal injury or death, unless officers of the parties have executed an agreement specifically governing such use. Buyers represent that they have all necessary expertise in the safety and regulatory ramifications of their applications, and acknowledge and agree that they are solely responsible for all legal, regulatory and safety-related requirements concerning their products and any use of TI products in such safety-critical applications, notwithstanding any applications-related information or support that may be provided by TI. Further, Buyers must fully indemnify TI and its representatives against any damages arising out of the use of TI products in such safety-critical applications.

TI products are neither designed nor intended for use in military/aerospace applications or environments unless the TI products are specifically designated by TI as military-grade or "enhanced plastic." Only products designated by TI as military-grade meet military specifications. Buyers acknowledge and agree that any such use of TI products which TI has not designated as military-grade is solely at the Buyer's risk, and that they are solely responsible for compliance with all legal and regulatory requirements in connection with such use.

TI products are neither designed nor intended for use in automotive applications or environments unless the specific TI products are designated by TI as compliant with ISO/TS 16949 requirements. Buyers acknowledge and agree that, if they use any non-designated products in automotive applications, TI will not be responsible for any failure to meet such requirements.

Following are URLs where you can obtain information on other Texas Instruments products and application solutions:

Products		Applications	
Amplifiers	amplifier.ti.com	Audio	www.ti.com/audio
Data Converters	dataconverter.ti.com	Automotive	www.ti.com/automotive
DLP® Products	www.dlp.com	Communications and Telecom	www.ti.com/communications
DSP	dsp.ti.com	Computers and Peripherals	www.ti.com/computers
Clocks and Timers	www.ti.com/clocks	Consumer Electronics	www.ti.com/consumer-apps
Interface	interface.ti.com	Energy	www.ti.com/energy
Logic	logic.ti.com	Industrial	www.ti.com/industrial
Power Mgmt	power.ti.com	Medical	www.ti.com/medical
Microcontrollers	microcontroller.ti.com	Security	www.ti.com/security
RFID	www.ti-rfid.com	Space, Avionics & Defense	www.ti.com/space-avionics-defense
RF/IF and ZigBee® Solutions	www.ti.com/lprf	Video and Imaging	www.ti.com/video
		Wireless	www.ti.com/wireless-apps

Mailing Address: Texas Instruments, Post Office Box 655303, Dallas, Texas 75265
Copyright © 2010, Texas Instruments Incorporated