

160mA Single channel LED Driver

Features

- Up to 160mA single channel constant current regulator
- Current set by an external resistor
- 1.6V ~ 16V wide supply voltage range supports self power structure in lighting application
- Minimum 0.4V (80mA) dropout voltage
- Fast current rising and falling
- -40°C ~ 85°C operating temperature
- Less than ±3% Chip to Chip current skew
- Less than 1%/V load (or line) regulation
- 160°C half power / 115°C recovery thermal protect
- Cascade-able for higher voltage drop applications

Product Description

NU510 is a medium power linear current regulation component that can be easily used in various LED lighting applications. It is equipped the excellent feature of good load/line regulation capability, minimized chip current skew, stable output current in high power or load voltage fluctuating environment that can be used in wide area of LED lighting source to maintain the uniformity of light intensity . NU510 also can be used in the digital PWM controlled circuit to achieve more precise current adjusting in gray level applications.

A special cascade mode is also provided by NU510. In high power supply voltage and low LED load dropout voltage application, two or more NU510 can be connected in series to share redundant high voltage. With the exclusive voltage sharing technology of NUMEN tech., the extra redundant voltage that exceeds the preset threshold voltage (Viboot) can be shared by next NU510.

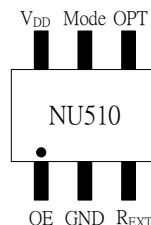
With the feature of wide power supply range design and ultra low I_{DD} consumption, the NU510 supports the self powered structure in LED lighting applications. In this structure, the NU510 no need to be provided a dedicate power circuit even the system power voltage is much higher than the maximum operation voltage of NU510. The V_{DD} power can be gotten from the proper position in LED series of system.

Applications

- General LED lighting
- Decoration lighting for architecture
- LED torch / flash light
- RGB lighting
- RGB display / indicator

Package Type

- SOT 23-6 (pin out compatible with NU501)
(Part No. : NU510ST)



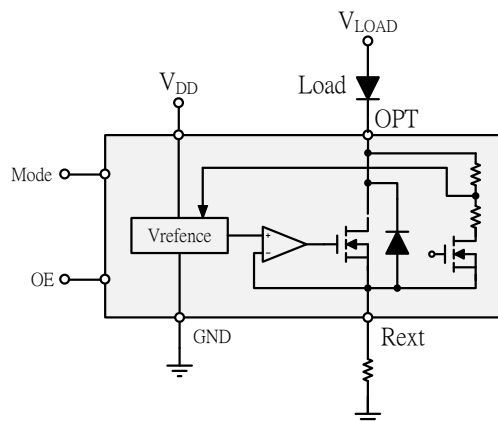
- MSOP 8 / SOP 8
(MSOP 8 Part No. : NU510EM)
(SOP 8 Part No. : NU510SO)



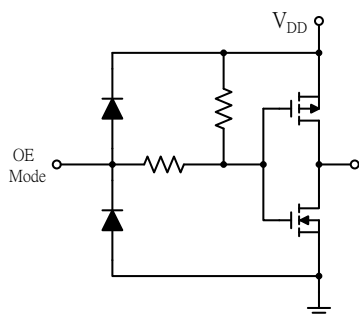
Terminal Description

Pin name	Function
V _{DD}	Power supply
OPT	Current sink
R _{EXT}	Current setting Resistor
OE	Output enable
Mode	Cascade / Normal mode selection
GND	Ground

Block Diagram



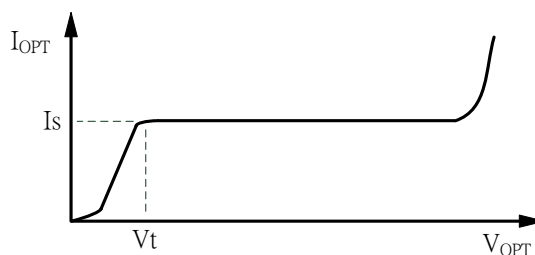
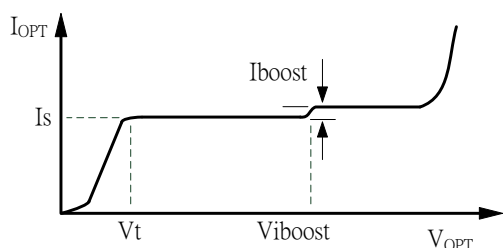
Equivalent Circuits for Inputs



Ideal IV characteristic

Mode pin = Logic high (default, cascade mode)

Mode pin = Logic low (normal mode)



Mode	Mode Pin	Current boost	Leakage (Max.)
Cascade mode	Logic high	+8%~+12%* IOPT	5uA
Normal mode	Logic low	-	0.5uA

Maximum Ratings (T = 25°C)

Characteristic	Symbol	Rating	Unit	
Supply voltage	V _{DD}	0 ~ 20	V	
Input voltage (Digital I/O)	V _{OE} , V _{MODE}	-0.2 ~ V _{DD}	V	
Output voltage	V _{OPT}	-0.2 ~ 24	V	
Output current	I _{PN}	0 ~ 200	mA	
Power Dissipation (Ta=25°C)	PD	SOT 236	0.25	W
		MSOP 8	0.6	
		SOP 8	1.25	
Thermal Resistance (On PCB, Ta=25°C)	R _{TH(j-a)}	SOT 236	400	°C /W
		MSOP 8	260	
		SOP 8	100	
Operating temperature	T _{OPR}	-40~+85	°C	
Storage temperature	T _{STG}	-55~+150	°C	

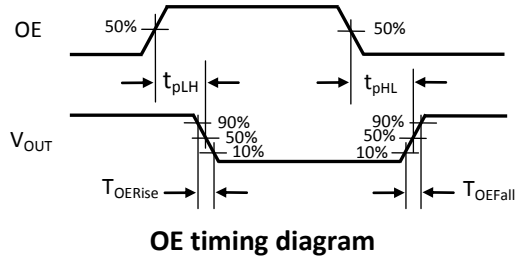
Electrical Characteristics and Recommended Operating Conditions

Characteristic	Symbol	Condition	Min.	Typ.	Max.	Unit	
Supply voltage	V _{DD}	Room Temp. V _{OPT} = 1V	1.5	1.6	16	V	
Output voltage	V _{OPT}		-	-	20	V	
Supply current	I _{DD}	V _{DD} ≤ 13V	40	80	150	uA	
		V _{DD} ≤ 16V	-	-	2	mA	
Minimum dropout voltage	V _{OUT}	V _{DD} ≥ 3V	I _S ≤ 20mA	0.25	0.3	0.4	V
			I _S ≤ 60mA	0.3	0.4	0.5	
			I _S ≤ 100mA	0.4	0.5	0.6	
			I _S ≤ 160mA	0.6	0.7	0.8	
Output current	I _{OPT}		-	-	160	mA	
Leakage	I _{Leakage}	V _{DD} > 3V, V _{OPT} = 10V	Mode = high	1	-	5	uA
			Mode = low	-	-	0.5	
Line regulation	%/V _{DD}	13V > V _{DD} > 1.6V	-	-	±1	%/V	
Load regulation	%/V _P	8V > V _{OUT} > 0.4V, Mode = low	-	-	±1	%/V	
Thermal regulation	%/10°C	V _{DD} = V _P = 3V	-	-	±0.5	%/10°C	
Input voltage	V _{IH}	V _{DD} ≥ 5V	3.2	-	-	V	
		V _{DD} < 5V	0.7V _{DD}			V	
	V _{IL}	V _{DD} ≥ 5V	-	-	2	V	
		V _{DD} < 5V	-	-	0.3V _{DD}	V	
Half power temperature	T _{half}	$I_{out} \cong \frac{I_{normal}}{2}$	-	160	-	°C	
Half power recovery temperature	T _{recov}	I _{out} recover to I _{normal}	-	115	-		
Current boost voltage	V _{iboot}	Mode = high	7	8	9	V	
Current boost	I _{boost}	Mode = high	8	10	12	% * I _{OPT}	
Chip current skew	I _{skew}	V _{DD} = V _P = 3V	-	2	3	%	

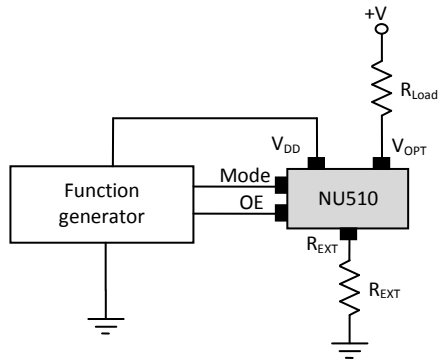
Switching Characteristics (T = 25°C)

Characteristic	Symbol	Condition	Min.	Typ.	Max.	Unit
Propagation Delay Time (OE from "L" to "H")	t _{pLH}	V _{DD} =4V, V _{OUT} =1V, I _{OUT} =120mA, OE= 0V → 4V	140	200	260	nS
Output current rising time (OE from "L" to "H")	t _{OE Rise}	V _{DD} =4V, V _{OUT} =1V, I _{OUT} =120mA, OE= 0V → 4V	30	40	60	nS
Propagation Delay Time (OE from "H" to "L")	t _{pHL}	V _{DD} =4V, V _{OUT} =1V, I _{OUT} =120mA, OE= 4V → 0V	260	320	380	nS
Output current falling time (OE from "H" to "L")	t _{OE Fall}	V _{DD} =4V, V _{OUT} =1V, I _{OUT} =120mA, OE= 4V → 0V	30	50	80	nS

Timing Waveform



Test Circuit



Output Current Setting

The output current of NU510 is set by an external resistor (R_{EXT}). The output current can be figured out by following equation.

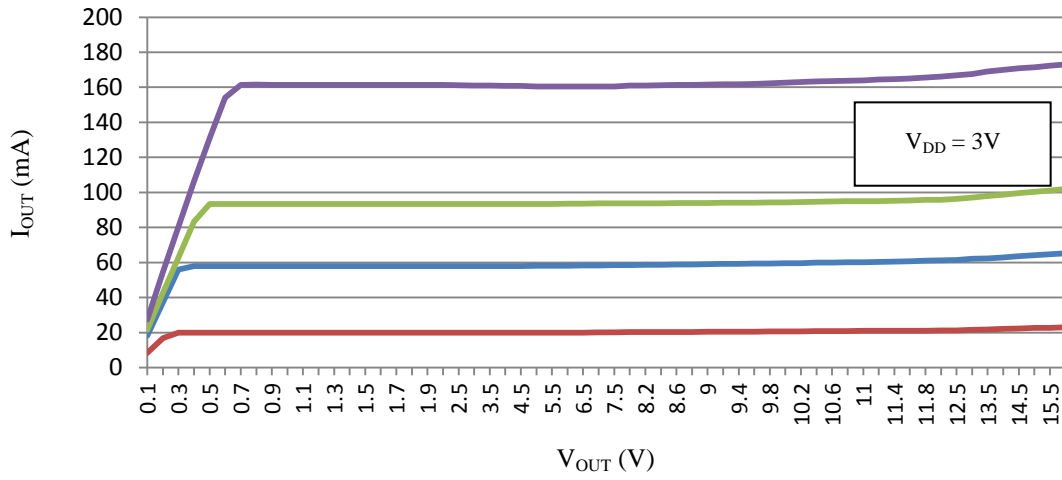
$$I_{out} \cong \frac{0.2V}{R_{EXT} + 0.07\Omega}$$

Thermal protection

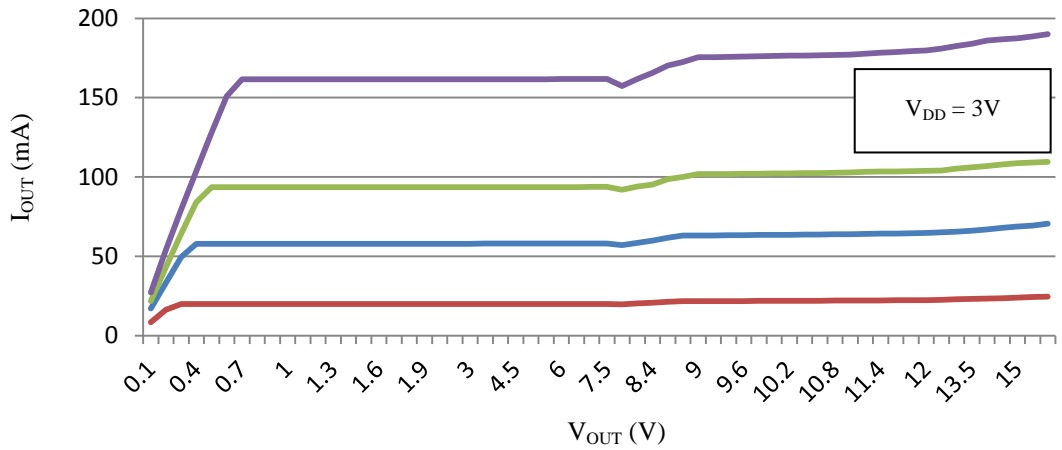
When junction temperature is more than half power temperature ($\sim 160^{\circ}\text{C}$), the output current of NU510 will decrease about 50% to lower down the power dissipation on chip. When the half power occurs, there are two conditions can recover the output current to normal. One is the junction temperature lower than recovery temperature ($\sim 115^{\circ}\text{C}$). The other one is to reset the OE signal from low to high.

Output I/V Curve

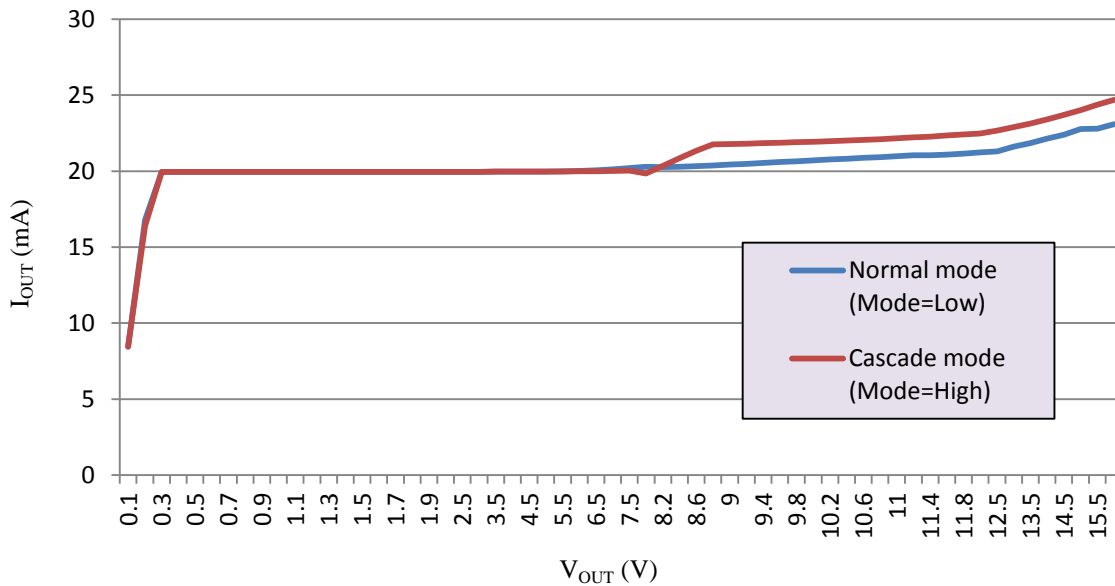
Normal mode output I/V curve



Cascade mode output I/V curve

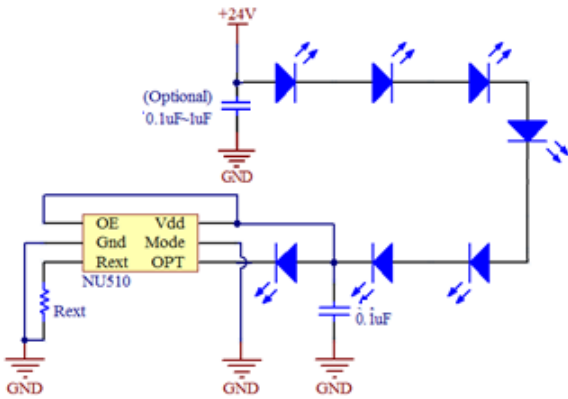


Output difference between cascade mode and normal mode

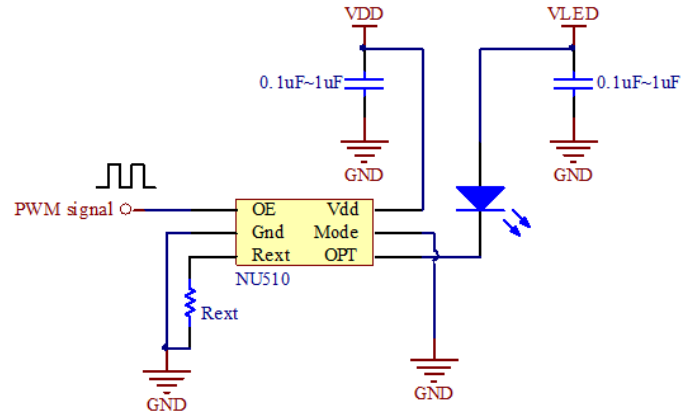


Typical Application Circuit

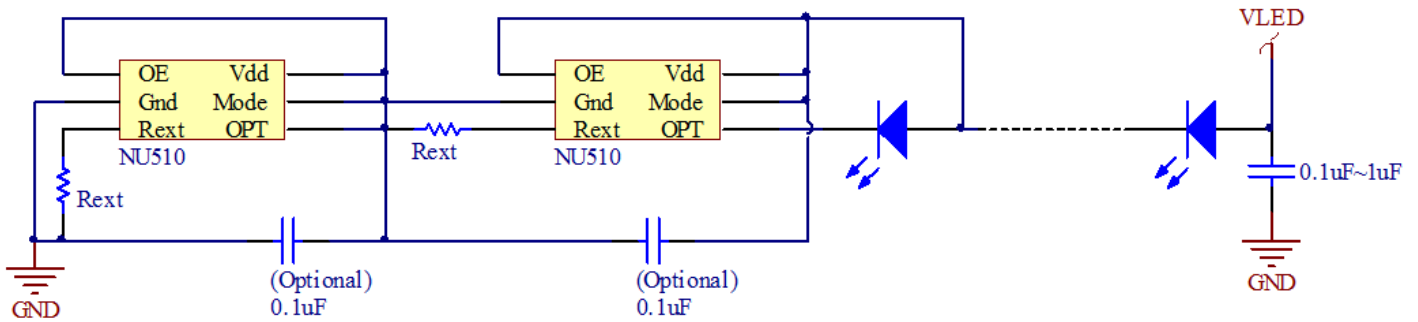
- 24v General lighting



- PWM grey level application



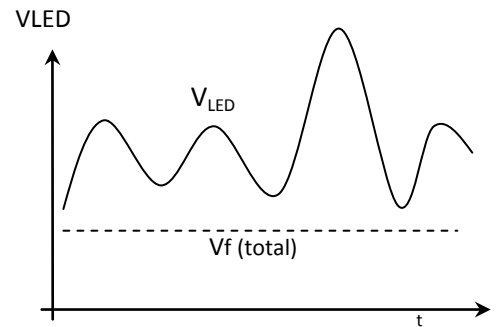
- Cascade application



By cascade mode, two or more NU510 in series can absorb higher voltage variation in lighting system. Each NU510 can share about 8 volts redundant. The total voltage variation range that system can work is calculated by following equation.

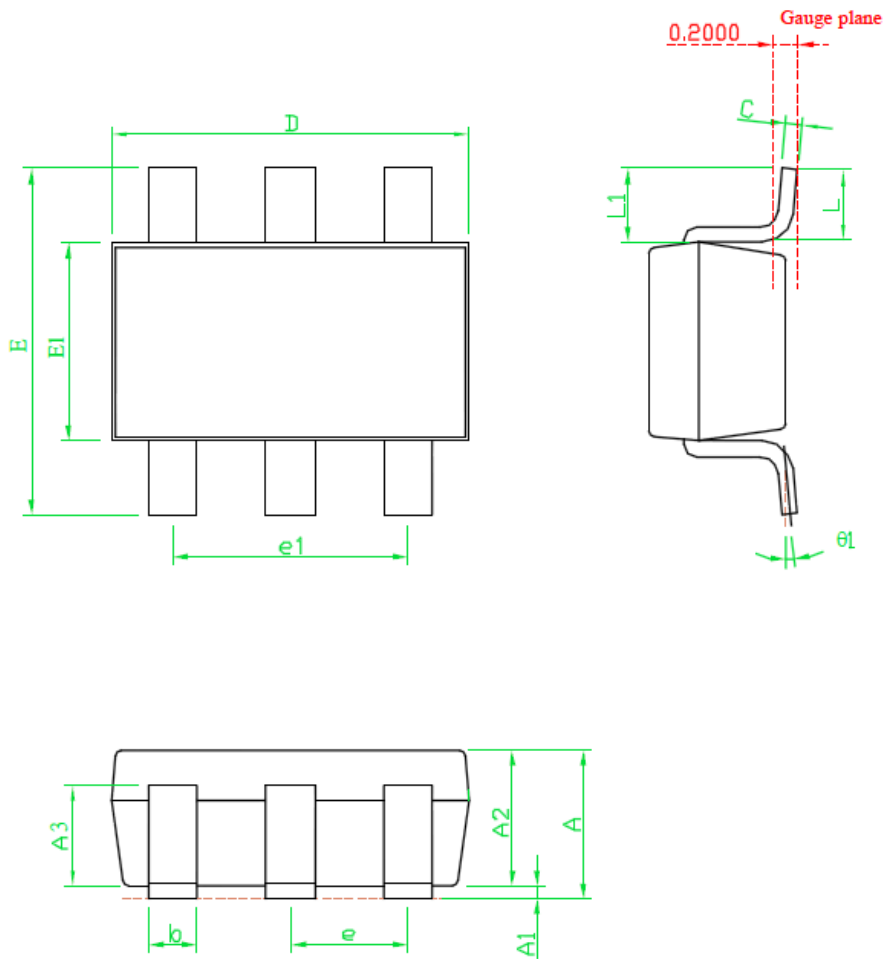
$$V_{LED(max)} \doteq 8 * N_{(NU510)} + V_{f(total)}$$

Where $V_{LED(max)}$ is the system power voltage, $N_{(NU510)}$ is the number of NU510 and $V_{f(total)}$ is the total forward voltage of all LEDs.



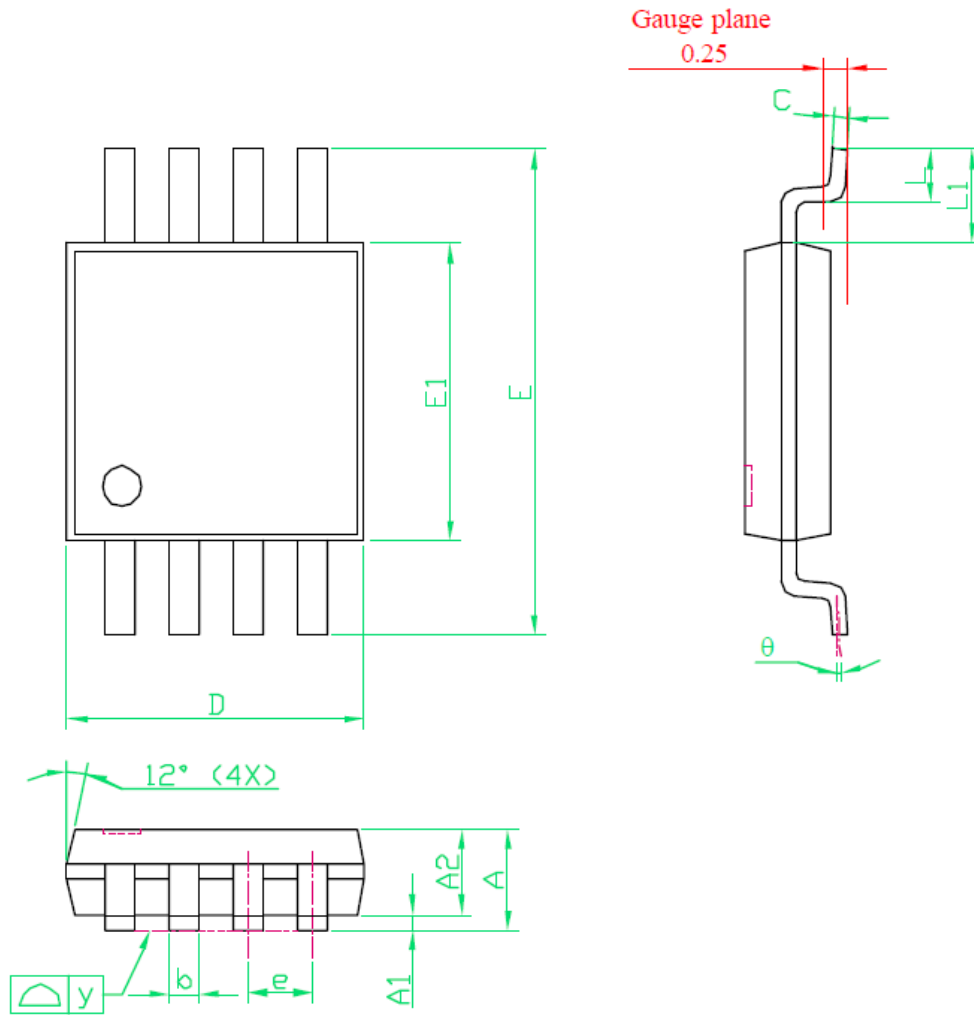
Package Dimensions

- SOT23-6



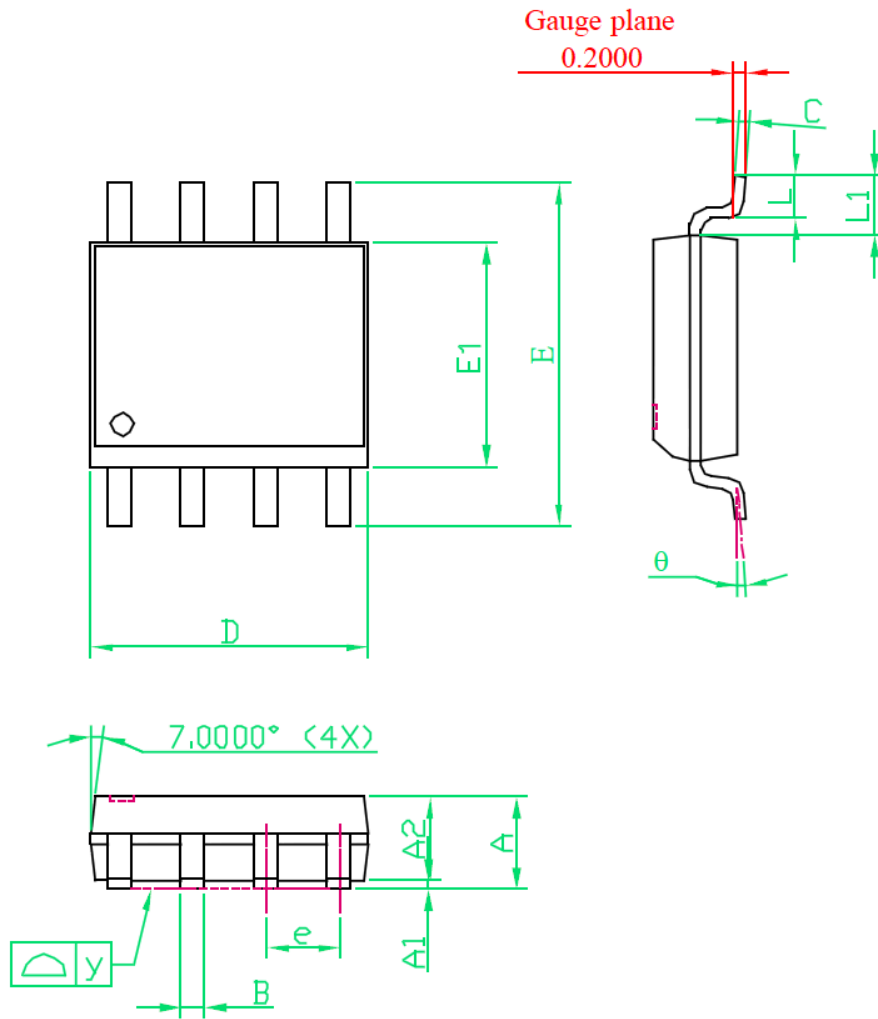
SYMBOLS	DIMENSIONS IN MILLIMETERS		
	MIN	NOM	MAX
A	1.00	1.10	1.40
A1	0.00	---	0.10
A2	1.00	1.10	1.30
A3	0.70	0.80	0.90
b	0.35	0.40	0.50
C	0.10	0.15	0.25
D	2.70	2.90	3.10
E1	1.40	1.60	1.80
e1	---	1.90(TYP)	---
E	2.60	2.80	3.00
L	0.37	---	---
$\theta1$	1°	5°	9°
e	---	0.95(TYP)	---
L1	0.5	0.6	0.7

- MSOP-8



SYMBOLS	DIMENSIONS IN MILLIMETER		
	MIN	NOM	MAX
A	---	---	1.10
A1	0.00	---	0.10
A2	0.75	0.85	0.95
b	0.22	0.30	0.38
C	0.13	0.15	0.23
D	---	3.00BSC	---
E	---	4.90BSC	---
E1	---	3.00BSC	---
e	---	0.65BSC	---
L	0.40	0.53	0.66
y	---	---	0.10
θ	0°	---	6°
L1	0.85	0.95	1.05

- SOP-8



SYMBOLS	DIMENSIONS IN MILLIMETER			DIMENSIONS IN INCH		
	MIN	NOM	MAX	MIN	NOM	MAX
A	1.35	1.60	1.75	0.053	0.063	0.069
A1	0.10	---	0.25	0.004	---	0.010
A2	---	1.45	---	---	0.057	---
B	0.33	---	0.51	0.013	---	0.020
C	0.19	---	0.25	0.007	---	0.010
D	4.80	---	5.00	0.189	---	0.197
E1	3.80	3.90	4.00	0.150	0.153	0.157
e	---	1.27	---	---	0.050	---
E	5.80	6.00	6.20	0.228	0.236	0.244
L	0.40	---	1.27	0.016	---	0.050
y	---	---	0.10	---	---	0.004
θ	0°	---	8°	0°	---	8°
L1	0.95	1.05	1.15	0.037	0.041	0.045

Restrictions on product use

- NUMEN Tech. reserves the right to update these specifications in the future.
- The information contained herein is subject to change without notice.
- NUMEN Technology will continually working to improve the quality and reliability of its products. Nevertheless, semiconductor device in general can malfunction or fail due to their inherent electrical sensitivity and vulnerability to physical stress. It is the responsibility of the buyer, when utilizing NUMEN products, to comply with the standards of safety in making a safe design for the entire system, and to avoid situations in which a malfunction or failure of such NUMEN products could cause loss of human life, bodily injury or damage to property. In developing your designs, please ensure that NUMEN products are used within specified operating ranges as set forth in the most recent NUMEN products specifications.
- The NUMEN products listed in this document are intended for usage in general electronics applications (lighting system, personal equipment, office equipment, measuring equipment, industrial robotics, domestic appliances, etc.). These NUMEN products are neither intended nor warranted for usage in equipment that requires extraordinarily high quality and/or reliability or a malfunction or failure of which may cause loss of human life or bodily injury (“Unintended Usage”). Unintended Usage include atomic energy control instruments, airplane or spaceship instruments, transportation instruments, traffic signal instruments, combustion control instruments, medical instruments, all types of safety devices, etc.. Unintended Usage of NUMEN products listed in this document shall be made at the customer’s own risk.