

Product Specifications

Line Filter, VI-HAM Harmonic Attenuator Module

The VI-HAM Harmonic Attenuator Module requires an external filter to meet international standards for EMI/RFI emissions, and incorporates transient surge protection, as outlined in the specifications below. When used in conjunction with the VI-HAM-CM family of modules, line filter P/N 30205 will meet the requirements of VFG 243 for conducted line noise.

Connecting Line Filter P/N 30205

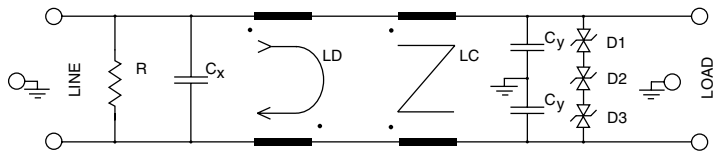
Connect single phase AC mains to the input of the line filter via a 10 A AC fuse. Connect the output of the filter to L1 and L2 of the VI-HAM (see Figure 2).

Specifications

Voltage Range	85-264 VAC
Current	6.3 A RMS
Temperature Range:	-40°C to +40°C
Line Frequency:	47 to 63 Hz
Leakage Current:	250 V @ 60 Hz, ≤1.2 mA
Transient Surge	1.2 /50 μs, 1 kV pulse,
Withstand:	2 joules 0 to 360° phase angle; exceeds IEC 801-5 Level B
Weight:	16 ounces (457 grams)
Size:	2.4" x 4.6" x 1.0" (6.1 cm x 11.7 cm x 2.54 cm)
Compatible Modules:	VI-HAM; C- and I-Grade
Agency Approvals:	UL, CSA, TÜV RoHS

Note:

The 30205 line filter is not hermetically sealed and therefore should not be subjected to post solder aqueous rinse.



Cx = 1.5 μF (x2) SH Cy = .01 μF SH LC = 6.9 mH LD = .72 mH
R = 235K OHM D1,2 = 1.5KE130CA D3 = 1.5KE150CA

Figure 1. Schematic, VI-HAM Line Filter

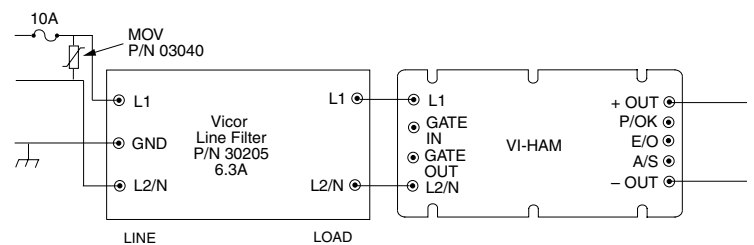


Figure 2. Connection Diagram, VI-HAM

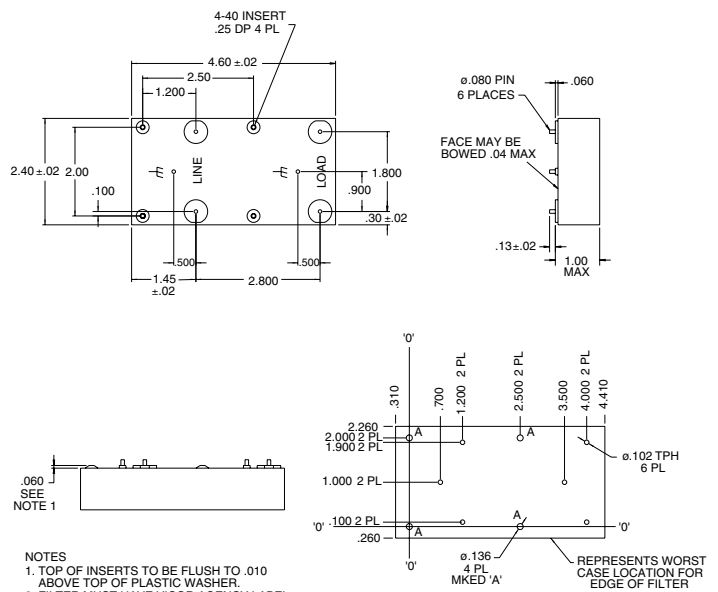


Figure 3. Line Filter P/N 30205



RoHS compliant