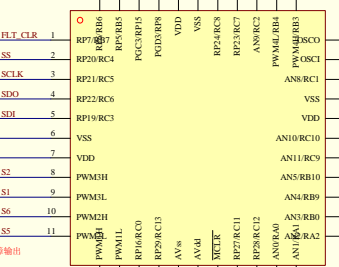
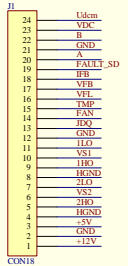
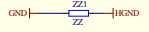
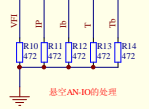
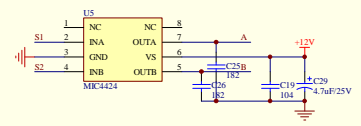


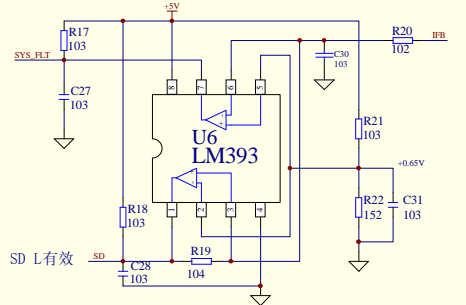
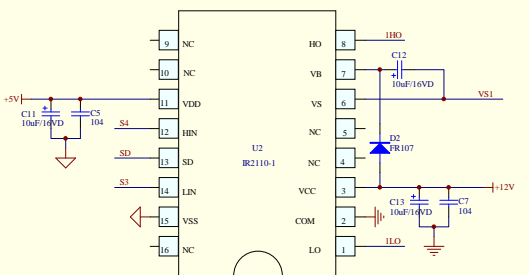
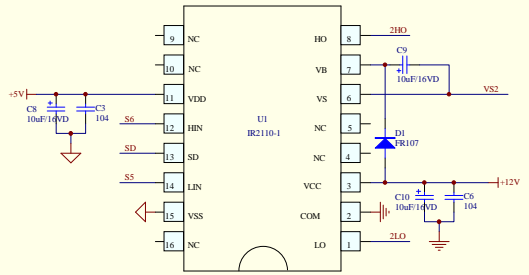
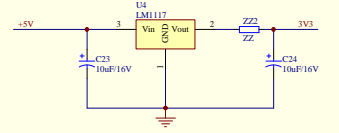
PS/2使用-TMP
EEPROM电路驱动控制信号

CHAR充电控制
FAN4风扇控制
TS温度采样
ETB-RC7是用于使电池充电器电路的控制信号
X1/X2是AN6和AN7



FLT_CLR逆变器故障输出
RC3-RC6为LCD接口
S1S2驱动推挽电路
S3S4SS56驱动全桥逆变器
RC0-A2控制LPS电源AC输出的微电器
FAULT_SD输入, 这个信号也可用于外部中断IN1
R22I48关断(SSD)发生时, 输出为低电平到SYS_FLT

AN0是逆变器电流检测
AN1是逆变器电压检测
AN2是推挽电压检测
AN3是直流环节电压检测
AN4是电池充电电流检测
AN5是电池电压检测
AN1是市电电压检测
RC1控制逆变器的串联电阻旁路继电器
AN8没使用



File		
Size	Number	Revision
C		
Date:	10 Jun 2014	Sheet of
File:	FEUUPS逆变器原理图(DSP33G8504)	Drawn By: